

## Product datasheet

# Recombinant Human RFPL3 protein ab161127

1 Image

### Overview

<b>Product name</b>	Recombinant Human RFPL3 protein
<b>Protein length</b>	Full length protein

### Description

<b>Nature</b>	Recombinant
<b>Source</b>	Wheat germ
<b>Amino Acid Sequence</b>	
<b>Species</b>	Human
<b>Sequence</b>	MAALFQEASSCPVCSYLEKPMSECGCTVCLKCINS LQKEPHGEDLLCC CCSMVSRQNKIRPNRQLERLVSHIKELEPKMKKILQMN PRMRKFQVDMTL DADTANNFLLISDDLRSVRSGLITQNRQDLAERFDVSV CILGSPRFTCGR HYWEVDVGTSTEWDLGVCRESVHCKGKIQLTTELGF WTVSLRDGSRLSAS TVPLTFLLVDRKLQRVGIFLDMGMQNVSFDAESGSH VYTFRSVSAEEPL RPFLAPSIPPNGDQGVLISICPLMNSGTTDAPVRPGEA K
<b>Amino acids</b>	1 to 288
<b>Tags</b>	GST tag N-Terminus

### Specifications

Our [Abpromise guarantee](#) covers the use of **ab161127** in the following tested applications.

The application notes include recommended starting dilutions; optimal dilutions/concentrations should be determined by the end user.

<b>Applications</b>	ELISA Western blot
<b>Form</b>	Liquid
<b>Additional notes</b>	Protein concentration is above or equal to 0.05 mg/ml.

## Preparation and Storage

---

### Stability and Storage

Shipped on dry ice. Upon delivery aliquot and store at -80°C. Avoid freeze / thaw cycles.

pH: 8.00

Constituents: 0.31% Glutathione, 0.79% Tris HCl

## General Info

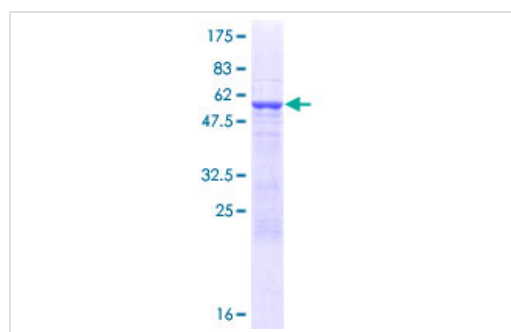
---

### Relevance

The function of this protein remains unknown. RFPL3 protein is encoded by 2 exons and is 91 to 94% identical to RFPL1 and RFPL2. Exon 1 of RFPL3 encodes a putative RING-like motif, and exon 2 encodes a B30-2 domain. Seroussi et al. (1999) proposed that RFPL3 arose from an intrachromosomal duplication.

## Images

---



ab161127 on a 12.5% SDS-PAGE stained with Coomassie Blue.

SDS-PAGE - Recombinant Human RFPL3 protein  
(ab161127)

**Please note:** All products are "FOR RESEARCH USE ONLY AND ARE NOT INTENDED FOR DIAGNOSTIC OR THERAPEUTIC USE"

## Our Abpromise to you: Quality guaranteed and expert technical support

---

- Replacement or refund for products not performing as stated on the datasheet
- Valid for 12 months from date of delivery
- Response to your inquiry within 24 hours
- We provide support in Chinese, English, French, German, Japanese and Spanish
- Extensive multi-media technical resources to help you
- We investigate all quality concerns to ensure our products perform to the highest standards

If the product does not perform as described on this datasheet, we will offer a refund or replacement. For full details of the Abpromise, please visit <https://www.abcam.com/abpromise> or contact our technical team.

## Terms and conditions

---

- Guarantee only valid for products bought direct from Abcam or one of our authorized distributors