

Product datasheet

Recombinant Human RFX4 protein ab159337

1 Image

Overview

Product name	Recombinant Human RFX4 protein
Protein length	Full length protein

Description

Nature	Recombinant
Source	Wheat germ
Amino Acid Sequence	
Species	Human

Sequence	<p>MNWAAFGGSEFFIPEGIQIDSRCP LSRNITEWYHYGIA VKESSQYDVM YSKKGAAWVSETGKKEVSKQTVAYS PRSKLGTLLPEF PNVKDLNLPASLP EEKVSTFIMMYRTHCQRILDTVIRANFDEVQS FLLHFW QGMPPHMLPVLG SSTVNIVGVCD SILYKAISGVLMP TVLQALPDSL TQVIR KFAKQLDEWL KVALHDLPENLRNIKFELSRRFSQILRRQ TSLNHL CQAS RTVIHSADITF QMLDWRNVDLNSITKQTL YTMEDSRDEHRKLITQLYQ EFDHLL EEQSPI ESYEWLDTMVDRCVVKVAAKRQGS LKKVAQQFLM WSCFGTRVIRDMTL HSAPSGS FHLIHLMFDDYVLYLLES LHCQERANELMR AMKGE GSTAEVR EEILTEAAAPTSPVPSFSPAKSATSVEVPPPSSPVS NPSPEY TGLSTT GAMQSYTWSLTYTVTTAAGSPAENSQQ LPCMRNTHV PSSSVTHRIPVYPH REEHGYTGSYNYGSYGNQHPPMQSQYPALPHDTAIS GPLHYAPYHRSSA QYPFNSPTSRMEPCLMSSTPRLHPTPVTPRWPEVPS ANTCYTSPSVHSAR YGNSSDMYTPLTTRRNSEYEHMQHFPGFAYINGEASTG WAK</p>
-----------------	--

Amino acids	1 to 641
Tags	GST tag N-Terminus

Specifications

Our [Abpromise guarantee](#) covers the use of **ab159337** in the following tested applications.

The application notes include recommended starting dilutions; optimal dilutions/concentrations should be determined by the end user.

Applications	ELISA Western blot
Form	Liquid
Additional notes	Protein concentration is above or equal to 0.05 mg/ml.

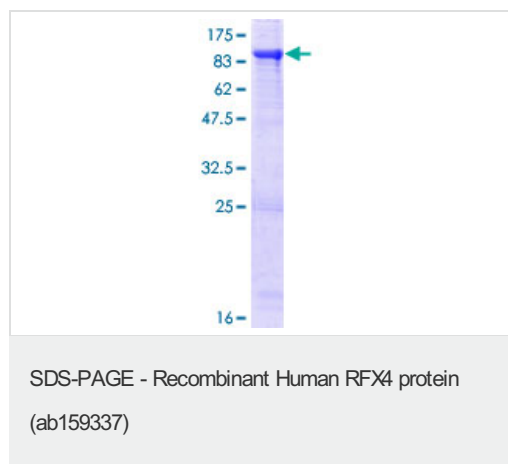
Preparation and Storage

Stability and Storage	Shipped on dry ice. Upon delivery aliquot and store at -80°C. Avoid freeze / thaw cycles. pH: 8.00 Constituents: 0.31% Glutathione, 0.79% Tris HCl
------------------------------	--

General Info

Function	May activate transcription by interacting directly with the X-box.
Tissue specificity	Isoform 4 is testis-specific. Isoform 1 is expressed in brain and gliomas. Isoform 2 and isoform 3 are testis-specific (at protein level). Isoform 1 is expressed in brain (at protein level). Isoform 3 is expressed at a higher level in adult testes and ejaculated spermatozoa than in fetal testes.
Sequence similarities	Belongs to the RFX family. Contains 1 RFX-type winged-helix DNA-binding domain.
Cellular localization	Nucleus.

Images



ab159337 on a 12.5% SDS-PAGE stained with Coomassie Blue.

Please note: All products are "FOR RESEARCH USE ONLY. NOT FOR USE IN DIAGNOSTIC PROCEDURES"

Our Abpromise to you: Quality guaranteed and expert technical support

- Replacement or refund for products not performing as stated on the datasheet
- Valid for 12 months from date of delivery
- Response to your inquiry within 24 hours

- We provide support in Chinese, English, French, German, Japanese and Spanish
- Extensive multi-media technical resources to help you
- We investigate all quality concerns to ensure our products perform to the highest standards

If the product does not perform as described on this datasheet, we will offer a refund or replacement. For full details of the Abpromise, please visit <https://www.abcam.com/abpromise> or contact our technical team.

Terms and conditions

- Guarantee only valid for products bought direct from Abcam or one of our authorized distributors