

## Product datasheet

# Recombinant Human Rheb2 protein ab165171

1 Image

### Description

<b>Product name</b>	Recombinant Human Rheb2 protein	
<b>Expression system</b>	Wheat germ	
<b>Protein length</b>	Full length protein	
<b>Animal free</b>	No	
<b>Nature</b>	Recombinant	
<b>Species</b>	Human	
<b>Sequence</b>	MPLVRYRKVVILGYRCVGKTSLAHQFVEGEFSEGYDP TVENTYSKIVTLG KDEFHLHLVDTAGQDEYSILPYSFIIGVHGYVLVYSVTSL HSFQVIESLY QKLHEGHGKTRVPVVLVGNKADLSPEREVQAVEGKK LAESWGATFMESSA RENQLTQGIFTKVIQEIARVENSYQGERRCHLM	
<b>Amino acids</b>	1 to 183	
<b>Tags</b>	GST tag N-Terminus	

### Specifications

Our [Abpromise guarantee](#) covers the use of **ab165171** in the following tested applications.

The application notes include recommended starting dilutions; optimal dilutions/concentrations should be determined by the end user.

<b>Applications</b>	ELISA Western blot
<b>Form</b>	Liquid
<b>Additional notes</b>	This product was previously labelled as RHEBL1.

### Preparation and Storage

<b>Stability and Storage</b>	Shipped on dry ice. Upon delivery aliquot and store at -80°C. Avoid freeze / thaw cycles. pH: 8.00 Constituents: 0.31% Glutathione, 0.79% Tris HCl
------------------------------	--

## General Info

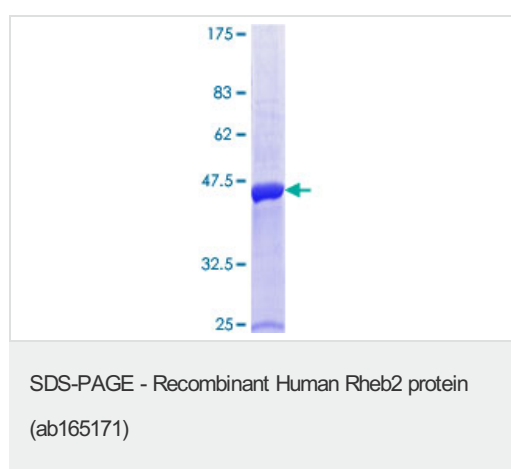
---

<b>Function</b>	Binds GTP and exhibits intrinsic GTPase activity. May activate NF-kappa-B-mediated gene transcription. Promotes signal transduction through MTOR, activates RPS6KB1, and is a downstream target of the small GTPase-activating proteins TSC1 and TSC2.
<b>Tissue specificity</b>	Ubiquitously expressed. Expression increased at least 2-fold in several tumor cell lines.
<b>Sequence similarities</b>	Belongs to the small GTPase superfamily. Rheb family.
<b>Cellular localization</b>	Cell membrane. Cytoplasm.

---

## Images

---



ab165171 on a 12.5% SDS-PAGE stained with Coomassie Blue.

**Please note:** All products are "FOR RESEARCH USE ONLY. NOT FOR USE IN DIAGNOSTIC PROCEDURES"

## Our Abpromise to you: Quality guaranteed and expert technical support

---

- Replacement or refund for products not performing as stated on the datasheet
- Valid for 12 months from date of delivery
- Response to your inquiry within 24 hours
- We provide support in Chinese, English, French, German, Japanese and Spanish
- Extensive multi-media technical resources to help you
- We investigate all quality concerns to ensure our products perform to the highest standards

If the product does not perform as described on this datasheet, we will offer a refund or replacement. For full details of the Abpromise, please visit <https://www.abcam.com/abpromise> or contact our technical team.

## Terms and conditions

---

- Guarantee only valid for products bought direct from Abcam or one of our authorized distributors