

Product datasheet

Recombinant Human Rho guanine exchange factor 16 protein ab162120

[1 Image](#)

Overview

Product name	Recombinant Human Rho guanine exchange factor 16 protein
Protein length	Full length protein

Description

Nature	Recombinant
Source	Wheat germ
Amino Acid Sequence	
Species	Human

Sequence	<p>MFEILTSEFSYQHLSILVEEFLQSKELRATVTQMEHHH LFSNILDVLGA SQRFFEDLEQRHKAQVLVEDISDILEEHAEKYFHPYIAY CSNEVYQQRTL QKLISSNAAFREALREIERRPACGGLPMLSFLILPMQRV TRLPLLMDTLC LKTQGHSEYKAASRALKAISKLVRCNEGHRMERM EQMYTLHTQLDFS KVKSLPLISASRWLLKRGELFLVEETGLFRKIASRPTCY LFLFNDVLVVT KKKSEESYMQDYAQMNIHQVEKIEPSELPLPGGGR SSSVPHPFQVTL RNSEGRQEQLLLSSDSASDRARWVALTHSERQWQG LSSKGDLPQVEITK AFFAKQADEVTLQQADVVLVLLQQEDGWLYGERLRDG ETGWFPEDFARFITSRVAVEGNVRRMERLRVETDV</p>
-----------------	---

Amino acids	1 to 421
Tags	proprietary tag N-Terminus

Specifications

Our [Abpromise guarantee](#) covers the use of **ab162120** in the following tested applications.

The application notes include recommended starting dilutions; optimal dilutions/concentrations should be determined by the end user.

Applications	ELISA Western blot
Form	Liquid
Additional notes	Protein concentration is above or equal to 0.05 mg/ml.

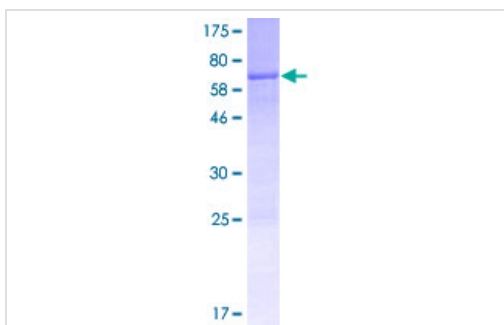
Preparation and Storage

Stability and Storage	Shipped on dry ice. Upon delivery aliquot and store at -80°C. Avoid freeze / thaw cycles. pH: 8.00 Constituents: 0.31% Glutathione, 0.79% Tris HCl
------------------------------	--

General Info

Function	Guanyl-nucleotide exchange factor of the RHO GTPase stimulating the exchange of RHO-associated GDP for GTP. May play a role in chemotactic cell migration by mediating the activation of RAC1 by EPHA2. May also activate CDC42 and mediate activation of CDC42 by the viral protein HPV16 E6.
Sequence similarities	Contains 1 DH (DBL-homology) domain. Contains 1 PH domain. Contains 1 SH3 domain.
Domain	The PDZ-binding motif mediates interaction with TAX1BP3.
Cellular localization	Cytoplasm.

Images



ab162120 on a 12.5% SDS-PAGE stained with Coomassie Blue.

SDS-PAGE - Recombinant Human Rho guanine exchange factor 16 protein (ab162120)

Please note: All products are "FOR RESEARCH USE ONLY AND ARE NOT INTENDED FOR DIAGNOSTIC OR THERAPEUTIC USE"

Our Abpromise to you: Quality guaranteed and expert technical support

- Replacement or refund for products not performing as stated on the datasheet
- Valid for 12 months from date of delivery

- Response to your inquiry within 24 hours
- We provide support in Chinese, English, French, German, Japanese and Spanish
- Extensive multi-media technical resources to help you
- We investigate all quality concerns to ensure our products perform to the highest standards

If the product does not perform as described on this datasheet, we will offer a refund or replacement. For full details of the Abpromise, please visit <https://www.abcam.com/abpromise> or contact our technical team.

Terms and conditions

- Guarantee only valid for products bought direct from Abcam or one of our authorized distributors