

Product datasheet

Recombinant Human RIPK5 protein ab161776

1 Image

Overview

Product name	Recombinant Human RIPK5 protein
Protein length	Full length protein

Description

Nature	Recombinant
Source	Wheat germ
Amino Acid Sequence	
Species	Human
Sequence	<p>MEGDGVPWGSEPVSGPGGGGMIRELCRGFGRYR RYLGRRLRQNLRETQK FFRDIKCSHNHTCLSSLTGGGGAERGPAGDVAETGLQ AGQLSCISFPPKE EKYLQQVMDCLPCILILGQDCNVKCQLLNLLLGVQVLPT TKLGSEESCKL RRLRFTYGTQTRVSLALPGQYELVHTLVAHQGNWETIP EEDLEVQENNED AAHVLAELEVTMHHALLQEVDVVVAPCQGLRPTVDVL GDLVNDFLPVITY ALHKDELSERDEQELQEIRKYFSFPVFFKVPKLGSEII DSSTRMESER SPLYRQLIDLGYLSSSHWNCGAPGQDTKAQSMLVEQS EKLRHLSTFSHQV LQTRLVDAAKALNLVHCHCLDIFINQAFDMQRDLQITPK RLEYTRKKENE LYESLMNIANRKQEEMKDMIVETLNTMKEELLDDATNM EFKDVMPENRE ITDLGFCKPEAMMSGVSGTPIHMAPELFTGKYDNSVD VYAFGILFWYIC SGSVKLPEAFERCASKDHLWNNVRRGARPERLPVFD EECWQLMEACWDGD PLKRPLLGVQPMQLQGIMNRLCKSNSEQPNRGLDDST</p>
Amino acids	1 to 587
Tags	GST tag N-Terminus

Additional sequence information This is the full length isoform 3 protein (Q6XUX3-3).

Specifications

Our [Abpromise guarantee](#) covers the use of **ab161776** in the following tested applications.

The application notes include recommended starting dilutions; optimal dilutions/concentrations should be determined by the end user.

Applications	Western blot ELISA
Form	Liquid
Additional notes	Protein concentration is above or equal to 0.05 mg/ml.

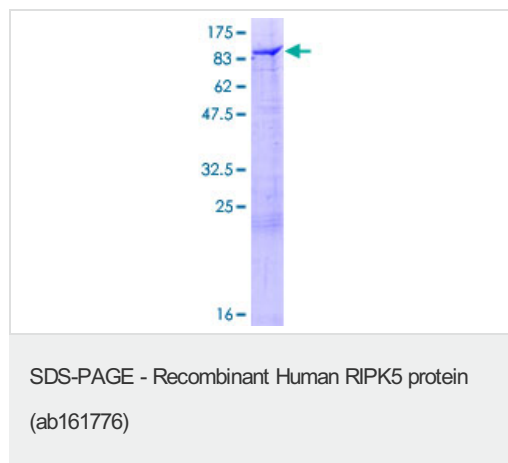
Preparation and Storage

Stability and Storage	Shipped on dry ice. Upon delivery aliquot and store at -80°C. Avoid freeze / thaw cycles. pH: 8.00 Constituents: 0.31% Glutathione, 0.79% Tris HCl
------------------------------	--

General Info

Function	May induce both caspase-dependent apoptosis and caspase-independent cell death.
Tissue specificity	Predominantly expressed in skeletal muscle and testis. Weakly expressed in heart, brain, placenta, kidney, pancreas, spleen, thymus, prostate, uterus, small intestine, white blood cells, stomach, spinal cord and adrenal gland. Is widely distributed in the CNS. Also detected in several tumor cell lines.
Sequence similarities	Belongs to the protein kinase superfamily. Ser/Thr protein kinase family. Contains 1 protein kinase domain.
Cellular localization	Cytoplasm.

Images



ab161776 on a 12.5% SDS-PAGE stained with Coomassie Blue.

Please note: All products are "FOR RESEARCH USE ONLY AND ARE NOT INTENDED FOR DIAGNOSTIC OR THERAPEUTIC USE"

Our Abpromise to you: Quality guaranteed and expert technical support

- Replacement or refund for products not performing as stated on the datasheet
- Valid for 12 months from date of delivery
- Response to your inquiry within 24 hours

- We provide support in Chinese, English, French, German, Japanese and Spanish
- Extensive multi-media technical resources to help you
- We investigate all quality concerns to ensure our products perform to the highest standards

If the product does not perform as described on this datasheet, we will offer a refund or replacement. For full details of the Abpromise, please visit <https://www.abcam.com/abpromise> or contact our technical team.

Terms and conditions

- Guarantee only valid for products bought direct from Abcam or one of our authorized distributors