

## Product datasheet

# Recombinant Human RNA polymerase II RBP8 protein ab159157

[1 References](#) [1 Image](#)

### Overview

<b>Product name</b>	Recombinant Human RNA polymerase II RBP8 protein
<b>Protein length</b>	Full length protein

### Description

<b>Nature</b>	Recombinant
<b>Source</b>	Wheat germ
<b>Amino Acid Sequence</b>	
<b>Species</b>	Human
<b>Sequence</b>	MAGILFEDIFDVKDIDPEGKKFDRVSRLHCESESFKMD LILDVNIQYPV DLGDKFRLVIASSTLYEDGTLDDGEYNPTDDRPSRADQ FEYVMYGKVYRIE GDETSTEAAATRLSAYVSYGGLLMRLQGDANNLHGFEV DSRVYLLMKKLAF
<b>Amino acids</b>	1 to 150
<b>Tags</b>	proprietary tag N-Terminus

### Specifications

Our [Abpromise guarantee](#) covers the use of **ab159157** in the following tested applications.

The application notes include recommended starting dilutions; optimal dilutions/concentrations should be determined by the end user.

<b>Applications</b>	ELISA Western blot
<b>Form</b>	Liquid
<b>Additional notes</b>	Protein concentration is above or equal to 0.05 mg/ml.

### Preparation and Storage

**Stability and Storage** Shipped on dry ice. Upon delivery aliquot and store at -80°C. Avoid freeze / thaw cycles.

pH: 8.00

Constituents: 0.31% Glutathione, 0.79% Tris HCl

## General Info

---

### Function

DNA-dependent RNA polymerase catalyzes the transcription of DNA into RNA using the four ribonucleoside triphosphates as substrates. Common component of RNA polymerases I, II and III which synthesize ribosomal RNA precursors, mRNA precursors and many functional non-coding RNAs, and small RNAs, such as 5S rRNA and tRNAs, respectively.

### Sequence similarities

Belongs to the eukaryotic RPB8 RNA polymerase subunit family.

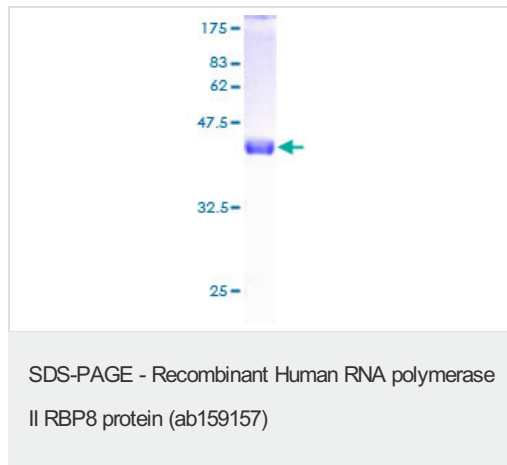
### Cellular localization

Nucleus > nucleolus.

---

## Images

---



ab159157 on a 12.5% SDS-PAGE stained with Coomassie Blue.

**Please note:** All products are "FOR RESEARCH USE ONLY AND ARE NOT INTENDED FOR DIAGNOSTIC OR THERAPEUTIC USE"

## Our Abpromise to you: Quality guaranteed and expert technical support

---

- Replacement or refund for products not performing as stated on the datasheet
- Valid for 12 months from date of delivery
- Response to your inquiry within 24 hours
- We provide support in Chinese, English, French, German, Japanese and Spanish
- Extensive multi-media technical resources to help you
- We investigate all quality concerns to ensure our products perform to the highest standards

If the product does not perform as described on this datasheet, we will offer a refund or replacement. For full details of the Abpromise, please visit <https://www.abcam.com/abpromise> or contact our technical team.

## Terms and conditions

---

- Guarantee only valid for products bought direct from Abcam or one of our authorized distributors