

## Product datasheet

# Recombinant Human RNF25 protein ab163816

1 Image

### Overview

<b>Product name</b>	Recombinant Human RNF25 protein
<b>Protein length</b>	Protein fragment

### Description

<b>Nature</b>	Recombinant
<b>Source</b>	Wheat germ
<b>Amino Acid Sequence</b>	
<b>Species</b>	Human
<b>Sequence</b>	RRHPKGGGECHAPKGRDTRDTQELPPPEGPLKEPMDLKP EPHSQGVEGPPQEK GPGSWQGPPPRRTRDCVRWERSKGRTPGSSYPRLP RGQGAYRPGTRRESL GLESKDGS
<b>Amino acids</b>	352 to 459
<b>Tags</b>	GST tag N-Terminus

### Specifications

Our [Abpromise guarantee](#) covers the use of **ab163816** in the following tested applications.

The application notes include recommended starting dilutions; optimal dilutions/concentrations should be determined by the end user.

<b>Applications</b>	Western blot ELISA
<b>Form</b>	Liquid
<b>Additional notes</b>	Protein concentration is above or equal to 0.05 mg/ml.

### Preparation and Storage

<b>Stability and Storage</b>	Shipped on dry ice. Upon delivery aliquot and store at -80°C. Avoid freeze / thaw cycles. pH: 8.00 Constituents: 0.31% Glutathione, 0.79% Tris HCl
------------------------------	--

## General Info

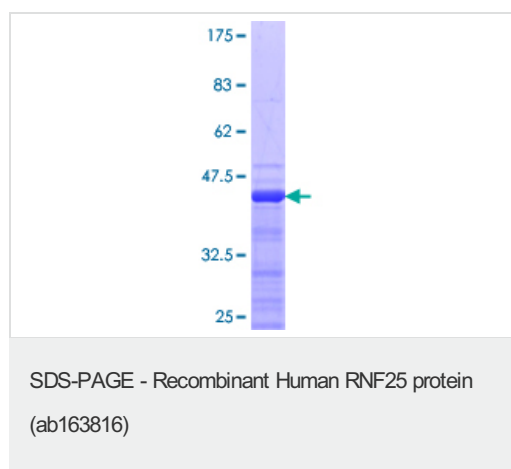
---

<b>Function</b>	E3 ubiquitin-protein ligase that mediates ubiquitination and subsequent proteasomal degradation of NKD2 (By similarity). Stimulates transcription mediated by NF-kappa-B.
<b>Pathway</b>	Protein modification; protein ubiquitination.
<b>Sequence similarities</b>	Contains 1 RING-type zinc finger. Contains 1 RWD domain.
<b>Domain</b>	The RING-type zinc finger domain interacts with an ubiquitin-conjugating enzyme (E2) and facilitates ubiquitination.
<b>Post-translational modifications</b>	Ubiquitinated.

---

## Images

---



ab163816 on a 12.5% SDS-PAGE stained with Coomassie Blue.

**Please note:** All products are "FOR RESEARCH USE ONLY. NOT FOR USE IN DIAGNOSTIC PROCEDURES"

## Our Abpromise to you: Quality guaranteed and expert technical support

---

- Replacement or refund for products not performing as stated on the datasheet
- Valid for 12 months from date of delivery
- Response to your inquiry within 24 hours
- We provide support in Chinese, English, French, German, Japanese and Spanish
- Extensive multi-media technical resources to help you
- We investigate all quality concerns to ensure our products perform to the highest standards

If the product does not perform as described on this datasheet, we will offer a refund or replacement. For full details of the Abpromise, please visit <https://www.abcam.com/abpromise> or contact our technical team.

## Terms and conditions

---

- Guarantee only valid for products bought direct from Abcam or one of our authorized distributors