

Product datasheet

Recombinant Human ROR1 protein (30-403aa) His tag
ab221309

1 Image

Description

Product name	Recombinant Human ROR1 protein (30-403aa) His tag	
Purity	> 95 % SDS-PAGE.	
Endotoxin level	< 1.000 Eu/μg	
Expression system	HEK 293 cells	
Accession	Q01973	
Protein length	Protein fragment	
Animal free	No	
Nature	Recombinant	
Species	Human	
Sequence	<p>QETELSVSAELVPTSSWNISSELNKDSYLTLDPEMNNI TTSLGQTAELHC KVSGNPPPTIRWFKNDAPVVQEPRRLSFRSTIYGSRLR IRNLDTTDTGYF QCVATNGKEVVSSSTGVLFVKFGPPPTASPGYSDEYEE DGFCQPYRGIACA RFIGNRTVYMESLHMQGEIENQITAAFTMIGTSSHLSDK CSQFAIPSLCH YAFPYCDTSSVPKPRDLRDECEILENVLCQTEYIFA RS NPMILMRL KLPNCEDLPQPESPEAANCIRIGIPMADPINKNHKCYNL TGVDYRGTVSV TK SGRQCQPWNSQYPHTHTFTALRFPELNGGHSYCRNP GNQKEAPWCF TLDENFKSDLCDIP ACDSKDSKEKNKME</p>	
Predicted molecular weight	44 kDa including tags	
Amino acids	30 to 403	
Tags	His tag C-Terminus	
Description	Recombinant Human ROR1 protein (His tag)	

Specifications

Specifications

Our [Abpromise guarantee](#) covers the use of **ab221309** in the following tested applications.

The application notes include recommended starting dilutions; optimal dilutions/concentrations should be determined by the end user.

Applications SDS-PAGE

Form Lyophilised

Preparation and Storage

Stability and Storage Shipped at 4°C. Store at -80°C. Avoid freeze / thaw cycle.

pH: 7.4

Constituents: 95% PBS, 5% Trehalose

Lyophilized from 0.22 µm filtered solution.

Reconstitution It is recommended to reconstitute the lyophilized product in sterile deionized water to a final concentration of 1 mg/ml. Solubilize for 30 to 60 minutes at room temperature with occasional gentle mixing. Carrier protein (0.1% HSA or BSA) is strongly recommended for further dilution and long term storage.

General Info

Function Tyrosine-protein kinase receptor whose role is not yet clear.

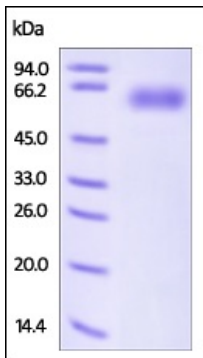
Tissue specificity Expressed strongly in human heart, lung and kidney, but weakly in the CNS. Isoform Short is strongly expressed in fetal and adult CNS and in a variety of human cancers, including those originating from CNS or PNS neuroectoderm.

Sequence similarities Belongs to the protein kinase superfamily. Tyr protein kinase family. ROR subfamily.
Contains 1 FZ (frizzled) domain.
Contains 1 Ig-like C2-type (immunoglobulin-like) domain.
Contains 1 kringle domain.
Contains 1 protein kinase domain.

Developmental stage Expressed at high levels during early embryonic development. The expression levels drop strongly around day 16 and there are only very low levels in adult tissues.

Cellular localization Membrane.

Images



SDS-PAGE - Recombinant Human ROR1 protein
(His tag) (ab221309)

SDS-PAGE analysis of reduced ab221309 stained overnight with Coomassie Blue.

DTT-reduced Protein migrates as 55-66 kDa in SDS-PAGE due to glycosylation.

Please note: All products are "FOR RESEARCH USE ONLY. NOT FOR USE IN DIAGNOSTIC PROCEDURES"

Our Abpromise to you: Quality guaranteed and expert technical support

- Replacement or refund for products not performing as stated on the datasheet
- Valid for 12 months from date of delivery
- Response to your inquiry within 24 hours
- We provide support in Chinese, English, French, German, Japanese and Spanish
- Extensive multi-media technical resources to help you
- We investigate all quality concerns to ensure our products perform to the highest standards

If the product does not perform as described on this datasheet, we will offer a refund or replacement. For full details of the Abpromise, please visit <https://www.abcam.com/abpromise> or contact our technical team.

Terms and conditions

- Guarantee only valid for products bought direct from Abcam or one of our authorized distributors