

Product datasheet

Recombinant Human ROR2 protein ab159018

1 Image

Overview

Product name	Recombinant Human ROR2 protein
Protein length	Protein fragment

Description

Nature	Recombinant
Source	Wheat germ
Amino Acid Sequence	
Species	Human
Sequence	EVEVLDPNDPLGPLDGQDGIPTLKGYFLNFLEPVNNI TIVQGQTALHC KVAGNPPPNVRWLKNDAPVVQEPRRIIRKTEYGSRLRI QDLDTTDTGYYQCVATNGMKT
Amino acids	34 to 143
Tags	GST tag N-Terminus

Specifications

Our [Abpromise guarantee](#) covers the use of **ab159018** in the following tested applications.

The application notes include recommended starting dilutions; optimal dilutions/concentrations should be determined by the end user.

Applications	ELISA Western blot
Form	Liquid
Additional notes	Protein concentration is above or equal to 0.05 mg/ml.

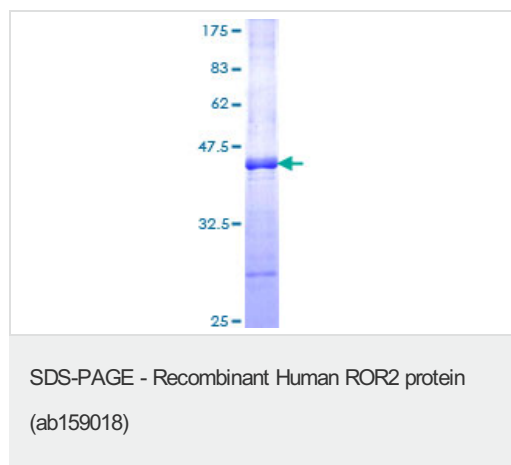
Preparation and Storage

Stability and Storage	Shipped on dry ice. Upon delivery aliquot and store at -80°C. Avoid freeze / thaw cycles. pH: 8.00 Constituents: 0.31% Glutathione, 0.79% Tris HCl
------------------------------	--

General Info

Function	Tyrosine-protein kinase receptor which may be involved in the early formation of the chondrocytes. It seems to be required for cartilage and growth plate development. Phosphorylates YWHAB, leading to induction of osteogenesis and bone formation.
Involvement in disease	Brachydactyly B1 Robinow syndrome autosomal recessive
Sequence similarities	Belongs to the protein kinase superfamily. Tyr protein kinase family. ROR subfamily. Contains 1 FZ (frizzled) domain. Contains 1 Ig-like C2-type (immunoglobulin-like) domain. Contains 1 kringle domain. Contains 1 protein kinase domain.
Developmental stage	Expressed at high levels during early embryonic development. The expression levels drop strongly around day 16 and there are only very low levels in adult tissues.
Cellular localization	Cell membrane.

Images



ab159018 on a 12.5% SDS-PAGE stained with Coomassie Blue.

Please note: All products are "FOR RESEARCH USE ONLY AND ARE NOT INTENDED FOR DIAGNOSTIC OR THERAPEUTIC USE"

Our Abpromise to you: Quality guaranteed and expert technical support

- Replacement or refund for products not performing as stated on the datasheet
- Valid for 12 months from date of delivery
- Response to your inquiry within 24 hours
- We provide support in Chinese, English, French, German, Japanese and Spanish
- Extensive multi-media technical resources to help you
- We investigate all quality concerns to ensure our products perform to the highest standards

If the product does not perform as described on this datasheet, we will offer a refund or replacement. For full details of the Abpromise, please visit <https://www.abcam.com/abpromise> or contact our technical team.

Terms and conditions

- Guarantee only valid for products bought direct from Abcam or one of our authorized distributors