

Product datasheet

Recombinant Human ROR2 protein (His tag) ab221029

1 Image

Description

Product name	Recombinant Human ROR2 protein (His tag)	
Purity	> 95 % SDS-PAGE.	
Endotoxin level	< 1.000 Eu/µg	
Expression system	HEK 293 cells	
Accession	Q01974	
Protein length	Protein fragment	
Animal free	No	
Nature	Recombinant	
Species	Human	
Sequence	<p>EVEVLDPNDPLGPLDGQDGIPTLKGYFLNFLEPVNNI TIVQGQTAILHC KVAGNPPPNVRWLKNDAPVVQEPRRIRKTEYGSRLRI QDLDTDTGYY QCVATNGMKTITATGVLFVRLGPTHSPNHNFDQDYHE DGFCQPYRGIACA RFIGNRTIYVDSLQMQGEIENRITAAFTMIGTSTHLSLSDQC SQFAIPSFCH FVFPLCDARSRTPKPRELCRDECEVLESDLCRQEYTI ARSNPLILMRLQL PKCEALPMPESPDAANCMRIGIPAERLGRYHQCYNYS GMDYRGTASTTKS GHQCQPWALQHPHSHHLSSTDFPELGGGHAYCRNPG GQMEGPWCFTQKNK VRMELCDVPSCSPRDSSKMG</p>	
Predicted molecular weight	43 kDa including tags	
Amino acids	34 to 403	
Tags	His tag C-Terminus	
Additional sequence information	Extracellular domain (NP_004551).	

Specifications

Our [Abpromise guarantee](#) covers the use of **ab221029** in the following tested applications.

The application notes include recommended starting dilutions; optimal dilutions/concentrations should be determined by the end user.

Applications SDS-PAGE

Form Lyophilised

Preparation and Storage

Stability and Storage Shipped at 4°C. Store at 4°C (stable for up to 12 months). Store at -80°C. Avoid freeze / thaw cycle.

pH: 7.4

Constituents: 95% PBS, 5% Trehalose

Lyophilized from 0.22 µm filtered solution.

Reconstitution It is recommended to reconstitute the lyophilized protein in sterile deionized water to a final concentration of 1 mg/ml. Solubilize for 30 to 60 minutes at room temperature with occasional gentle mixing. Carrier protein (0.1% HSA or BSA) is strongly recommended for further dilution and long term storage.

General Info

Function Tyrosine-protein kinase receptor which may be involved in the early formation of the chondrocytes. It seems to be required for cartilage and growth plate development. Phosphorylates YWHAB, leading to induction of osteogenesis and bone formation.

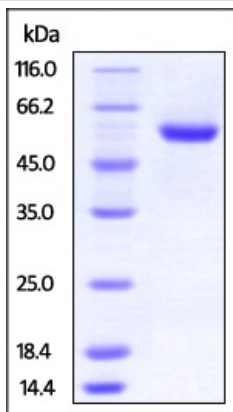
Involvement in disease Brachydactyly B1
Robinow syndrome autosomal recessive

Sequence similarities Belongs to the protein kinase superfamily. Tyr protein kinase family. ROR subfamily.
Contains 1 FZ (frizzled) domain.
Contains 1 Ig-like C2-type (immunoglobulin-like) domain.
Contains 1 kringle domain.
Contains 1 protein kinase domain.

Developmental stage Expressed at high levels during early embryonic development. The expression levels drop strongly around day 16 and there are only very low levels in adult tissues.

Cellular localization Cell membrane.

Images



SDS-PAGE analysis of reduced ab221029 stained overnight with Coomassie Blue. The reducing protein migrates as 55 kDa in SDS-PAGE due to glycosylation.

SDS-PAGE - Recombinant Human ROR2 protein
(His tag) (ab221029)

Please note: All products are "FOR RESEARCH USE ONLY. NOT FOR USE IN DIAGNOSTIC PROCEDURES"

Our Abpromise to you: Quality guaranteed and expert technical support

- Replacement or refund for products not performing as stated on the datasheet
- Valid for 12 months from date of delivery
- Response to your inquiry within 24 hours
- We provide support in Chinese, English, French, German, Japanese and Spanish
- Extensive multi-media technical resources to help you
- We investigate all quality concerns to ensure our products perform to the highest standards

If the product does not perform as described on this datasheet, we will offer a refund or replacement. For full details of the Abpromise, please visit <https://www.abcam.com/abpromise> or contact our technical team.

Terms and conditions

- Guarantee only valid for products bought direct from Abcam or one of our authorized distributors