

Product datasheet

Recombinant Human RPS6 protein ab195250

1 Image

Description

| | | |
|--|---|--|
| Product name | Recombinant Human RPS6 protein | |
| Expression system | Wheat germ | |
| Accession | P62753 | |
| Protein length | Full length protein | |
| Animal free | No | |
| Nature | Recombinant | |
| Species | Human | |
| Sequence | MKLNISFPATGCQKLVVDDERKLRTFYEKRMATEVAA DALGEEWKGYYV RISGGNDKQGFPKQGVLTGGRVRLLSKGGHSCYRPR RTGERKRKSVRGC IVDANLSVLNLVMKKGEKDIPGLTDTTPRRLGPKRAS RIRKLFNLSKE DDVRQYVVRKPLNKEGKKPRTKAPKIQRLVTPRVLQH KRRRIALKKQRTK KNKEEAAEYAKLLAKRMKEAKEKRQEIQAKRRRLSSL RASTSKSESSQK | |
| Predicted molecular weight | 53 kDa including tags | |
| Amino acids | 1 to 249 | |
| Tags | GST tag N-Terminus | |
| Additional sequence information | (AAH00524). | |

Specifications

Our [Abpromise guarantee](#) covers the use of **ab195250** in the following tested applications.

The application notes include recommended starting dilutions; optimal dilutions/concentrations should be determined by the end user.

| | |
|-------------------------|--|
| Applications | Western blot |
| | SDS-PAGE |
| | ELISA |
| Form | Liquid |
| Additional notes | Protein concentration is above or equal to 0.05 µg/µl. |

Preparation and Storage

Stability and Storage

Shipped on Dry Ice. Upon delivery aliquot. Store at -80°C. Avoid freeze / thaw cycle.

pH: 8

Constituents: 0.79% Tris HCl, 0.31% Glutathione

General Info

Function

May play an important role in controlling cell growth and proliferation through the selective translation of particular classes of mRNA.

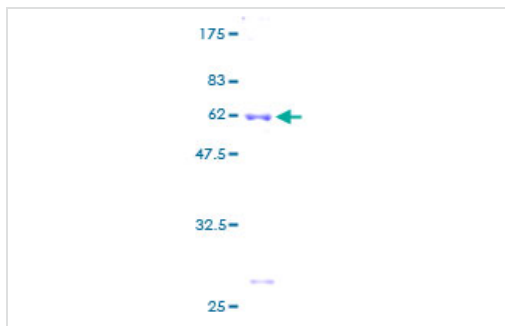
Sequence similarities

Belongs to the ribosomal protein S6e family.

Post-translational modifications

Ribosomal protein S6 is the major substrate of protein kinases in eukaryote ribosomes. The phosphorylation is stimulated by growth factors, tumor promoting agents, and mitogens. It is dephosphorylated at growth arrest.

Images



12.5% SDS-PAGE analysis of ab195250 stained with Coomassie Blue.

SDS-PAGE - Recombinant Human RPS6 protein
(ab195250)

Please note: All products are "FOR RESEARCH USE ONLY. NOT FOR USE IN DIAGNOSTIC PROCEDURES"

Our Abpromise to you: Quality guaranteed and expert technical support

- Replacement or refund for products not performing as stated on the datasheet
- Valid for 12 months from date of delivery
- Response to your inquiry within 24 hours
- We provide support in Chinese, English, French, German, Japanese and Spanish
- Extensive multi-media technical resources to help you
- We investigate all quality concerns to ensure our products perform to the highest standards

If the product does not perform as described on this datasheet, we will offer a refund or replacement. For full details of the Abpromise, please visit <https://www.abcam.com/abpromise> or contact our technical team.

Terms and conditions

- Guarantee only valid for products bought direct from Abcam or one of our authorized distributors