

Product datasheet

Recombinant Human RRAGC protein ab123171

1 Image

Description

Product name	Recombinant Human RRAGC protein
Purity	> 85 % SDS-PAGE. ab123171 is purified using conventional chromatography techniques.
Expression system	Escherichia coli
Accession	Q9HB90
Protein length	Full length protein
Animal free	No
Nature	Recombinant
Species	Human
Sequence	<pre> MGSSHHHHHH SSGLVPRGSH MGSMSLQYG AEETPLAGSY GAADSF PKDF GYGV EEEEE AAAAGGGVGA GAGGGCGPGG ADSSKPRILL MGLRRSGKSS IQKVV FHKMS PNETLFLEST NKIKDDISN SSFVNFQIWD FPGQMDFFDP TFDYEMIFRG TGALYVIDA QDDYMEALTR LHITVSKAYK VNPDMNFEVF IHKVDGLSDD HKIETQRDIH QRANDDLADA GLEKLHLSFY LTSYDHSIF EAFSKVVQKL IPQLPTLENL LNIFISNSGI EKAFLFDVVS KIMATDSSP VDMQSYELCC DMIDVVIDVS CIYGLKEDGS GSAYDKESMA IIKLNNTTVL YLKEVTKFLA LVCILREESF ERKGLIDYNF HCFRKAIHEV FEVGV TSHRS CGHQTSASSL KALTHNGTPR NAI </pre>
Predicted molecular weight	47 kDa including tags
Amino acids	1 to 399
Tags	His tag N-Terminus

Specifications

Our [Abpromise guarantee](#) covers the use of **ab123171** in the following tested applications.

The application notes include recommended starting dilutions; optimal dilutions/concentrations should be determined by the end user.

Applications	Mass Spectrometry SDS-PAGE
---------------------	-------------------------------

Mass spectrometry	MALDI-TOF
--------------------------	-----------

Form Liquid

Preparation and Storage

Stability and Storage Shipped at 4°C. Store at +4°C short term (1-2 weeks). Upon delivery aliquot. Store at -20°C or -80°C. Avoid freeze / thaw cycle.

pH: 8.00
Constituents: 0.02% DTT, 0.32% Tris HCl, 10% Glycerol (glycerin, glycerine), 0.58% Sodium chloride

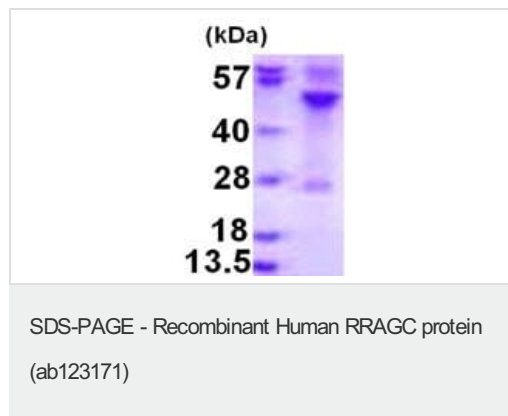
General Info

Function Has guanine nucleotide-binding activity but weak intrinsic GTPase activity. Probably required for the amino acid-induced relocalization of mTORC1 to the lysosomes and its subsequent activation by the GTPase RHEB. This is a crucial step in the activation of the TOR signaling cascade by amino acids.

Sequence similarities Belongs to the GTR/RAG GTP-binding protein family.

Cellular localization Cytoplasm. Nucleus. Lysosome. Predominantly cytoplasmic. May shuttle between the cytoplasm and nucleus, depending on the bound nucleotide state of associated RRAGA.

Images



15% SDS-PAGE showing ab123171 (3µg).

Please note: All products are "FOR RESEARCH USE ONLY. NOT FOR USE IN DIAGNOSTIC PROCEDURES"

Our Abpromise to you: Quality guaranteed and expert technical support

- Replacement or refund for products not performing as stated on the datasheet
- Valid for 12 months from date of delivery
- Response to your inquiry within 24 hours
- We provide support in Chinese, English, French, German, Japanese and Spanish
- Extensive multi-media technical resources to help you
- We investigate all quality concerns to ensure our products perform to the highest standards

If the product does not perform as described on this datasheet, we will offer a refund or replacement. For full details of the Abpromise, please visit <https://www.abcam.com/abpromise> or contact our technical team.

Terms and conditions

- Guarantee only valid for products bought direct from Abcam or one of our authorized distributors