

Product datasheet

Recombinant human Rsk 2 / MAPKAP Kinase 1b (mutated L608 F) protein ab172182

2 Images

Overview

<b>Product name</b>	Recombinant human Rsk 2 / MAPKAP Kinase 1b (mutated L608 F) protein
<b>Protein length</b>	Full length protein

Description

<b>Nature</b>	Recombinant
<b>Source</b>	Baculovirus infected Sf9 cells
<b>Amino Acid Sequence</b>	
<b>Accession</b>	<a href="#">NM_004586</a>
<b>Species</b>	Human
<b>Sequence</b>	<p>MPLAQLADPWQKMAVESPSDSAENGQQIMDEPMGE          EEINPQTEEVSIKEI          AITHHVKEGHEKADPSQFELLKVLGQGSFGKVFLVKKI          SGSDARQLYAMK          VLKATLKVDRVRRTKMERDILVEVNHPFMKLHYAFQT          EGKLYLIDFL          RGGDLFTRLSKEVMFTEEDVKFYLAELALALDHLHSL          GIYRDLKPENIL          LDEEGHIKLTDFGLSKESIDHEKKAYSFCGTVEYMAPE          VVNRRGHTQSAD          WWSFGVLMFEMLTGTLPFQGKDRKETMTMILKAKLG          MPQFLSPEAQSLLR          MLFKRNPANRLGAGPDGVVEEIKRHSFFSTIDWNKLYRR          EIHPFKPATGR          PEDTFYFDPEFTAKTPKDSPGIPPSANAHQLFRGFSFV          AITSDDESQAMQ          TVGVHSIVQQLHRNSIQFTDGYEVKEDIGVGSYSVCKR          CIHKATNMEFAV          KIIDKSKRDPTEEIEILLRYGQHPNIITLKDVYDDGKYVYV          VTELMKGGE          LLDKILRQKFFSEREASAVLFTITKTVEYLHAQGVVHRD          LKPSNILYVDE          SGNPESIRICDFGFAKQLRAENGLLMTPCYTANFVAPE</p>

VLKRQGYDAACD  
WSLGVLLYTMLTGYTPFANGPDDTPEEILARIGSGKFS  
LSGGYWNSVSD  
TAKDLVSKMLHVDPHQRLTAALVLRHPWVHWDQLPQ  
YQLNRQDAPHLVK  
GAMAATYSALNRNQSPVLEPVGRSTLAQRRGIKKITST  
AL

<b>Molecular weight</b>	84 kDa
<b>Amino acids</b>	1 to 740
<b>Tags</b>	proprietary tag N-Terminus

## Specifications

---

Our [Abpromise guarantee](#) covers the use of **ab172182** in the following tested applications.

The application notes include recommended starting dilutions; optimal dilutions/concentrations should be determined by the end user.

<b>Biological activity</b>	Specific Activity, 140 nmol/min/mg.
<b>Applications</b>	Functional Studies Western blot SDS-PAGE
<b>Purity</b>	> 95 % Densitometry.
<b>Form</b>	Liquid

## Preparation and Storage

---

<b>Stability and Storage</b>	Shipped on Dry Ice. Upon delivery aliquot. Store at -80°C. Avoid freeze / thaw cycle. pH: 7.50 Constituents: 25% Glycerol, 0.88% Sodium chloride, 0.31% Glutathione, 0.003% EDTA, 0.004% DTT, 0.61% Tris-HCl buffer, 0.002% PMSF This product is an active protein and may elicit a biological response in vivo, handle with caution.
------------------------------	--

## General Info

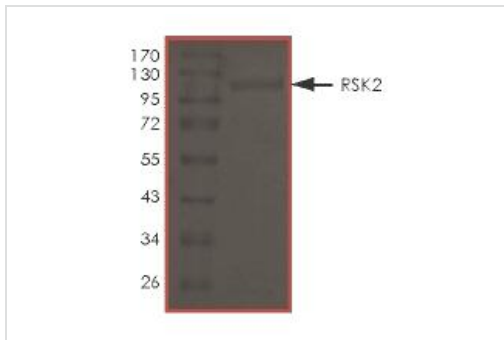
---

<b>Function</b>	Serine/threonine kinase that may play a role in mediating the growth-factor and stress induced activation of the transcription factor CREB.
<b>Tissue specificity</b>	Expressed in many tissues, highest levels in skeletal muscle.
<b>Involvement in disease</b>	Defects in RPS6KA3 are the cause of Coffin-Lowry syndrome (CLS) [MIM:303600]; an X-linked dominant disorder characterized by severe mental retardation with facial and digital dysmorphisms, and progressive skeletal deformations.
<b>Sequence similarities</b>	Belongs to the protein kinase superfamily. AGC Ser/Thr protein kinase family. S6 kinase subfamily. Contains 1 AGC-kinase C-terminal domain. Contains 2 protein kinase domains.
<b>Post-translational</b>	Autophosphorylated on Ser-386, as part of the activation process.

## modifications

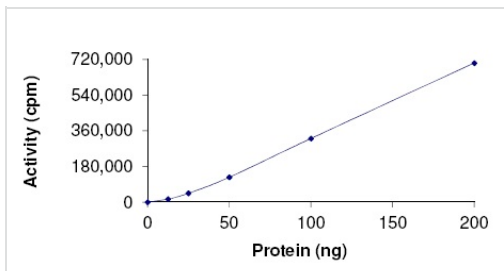
Ser-227 phosphorylation promotes Ser-386 phosphorylation and leads to basal activation. Full activation by growth factors requires additional phosphorylation on Ser-369.

## Images



ab172182 on SDS-PAGE.

SDS-PAGE - Recombinant human Rsk 2 /  
MAPKAP Kinase 1b (mutated L608 F) protein  
(ab172182)



Sample Kinase Activity Plot. ab172182 specific activity was determined to be 140 nmol/min/mg.

Other - Recombinant human Rsk 2 / MAPKAP  
Kinase 1b (mutated L608 F) protein (ab172182)

**Please note:** All products are "FOR RESEARCH USE ONLY AND ARE NOT INTENDED FOR DIAGNOSTIC OR THERAPEUTIC USE"

## Our Abpromise to you: Quality guaranteed and expert technical support

- Replacement or refund for products not performing as stated on the datasheet
- Valid for 12 months from date of delivery
- Response to your inquiry within 24 hours
- We provide support in Chinese, English, French, German, Japanese and Spanish
- Extensive multi-media technical resources to help you
- We investigate all quality concerns to ensure our products perform to the highest standards

If the product does not perform as described on this datasheet, we will offer a refund or replacement. For full details of the Abpromise, please visit <https://www.abcam.com/abpromise> or contact our technical team.

## Terms and conditions

- Guarantee only valid for products bought direct from Abcam or one of our authorized distributors