

Product datasheet

Recombinant Human S100 alpha 6/PRA protein  
ab104645

1 References 1 Image

Description

<b>Product name</b>	Recombinant Human S100 alpha 6/PRA protein
<b>Purity</b>	> 95 % SDS-PAGE. ab104645 is purified by using anion-exchange chromatography (DEAE sepharose resin) and gel-filtration chromatography (Sephacryl S-200) with 20mM Tris pH 7.5, 2mM EDTA.
<b>Expression system</b>	Escherichia coli
<b>Accession</b>	<a href="#">P06703</a>
<b>Protein length</b>	Full length protein
<b>Animal free</b>	No
<b>Nature</b>	Recombinant
<b>Species</b>	Human
<b>Sequence</b>	<b>MGSSHHHHHSSGLVPRGSHMACPLDQAIGLLVAIFHKY</b> SGREGDKHTLS KKELKELIQKELTIGSKLQDAEIARLMEDLDRNKDQEVNFQ EYVTFLLGAL ALYNEALKG
<b>Predicted molecular weight</b>	12 kDa including tags
<b>Amino acids</b>	1 to 90
<b>Tags</b>	His tag N-Terminus

Specifications

Our [Abpromise guarantee](#) covers the use of **ab104645** in the following tested applications.

The application notes include recommended starting dilutions; optimal dilutions/concentrations should be determined by the end user.

<b>Applications</b>	SDS-PAGE Mass Spectrometry
<b>Mass spectrometry</b>	MALDI-TOF
<b>Form</b>	Liquid
<b>Additional notes</b>	This product was previously labelled as S100 alpha 6

## Preparation and Storage

---

### Stability and Storage

Shipped at 4°C. Store at +4°C short term (1-2 weeks). Upon delivery aliquot. Store at -20°C or -80°C. Avoid freeze / thaw cycle.

pH: 8.00

Constituents: 0.0154% DTT, 0.316% Tris HCl, 30% Glycerol (glycerin, glycerine), 0.58% Sodium chloride

## General Info

---

### Function

May function as calcium sensor and modulator, contributing to cellular calcium signaling. May function by interacting with other proteins, such as TPR-containing proteins, and indirectly play a role in many physiological processes such as the reorganization of the actin cytoskeleton and in cell motility. Binds 2 calcium ions. Calcium binding is cooperative.

### Sequence similarities

Belongs to the S-100 family.  
Contains 2 EF-hand domains.

### Post-translational modifications

The N-terminus is blocked.

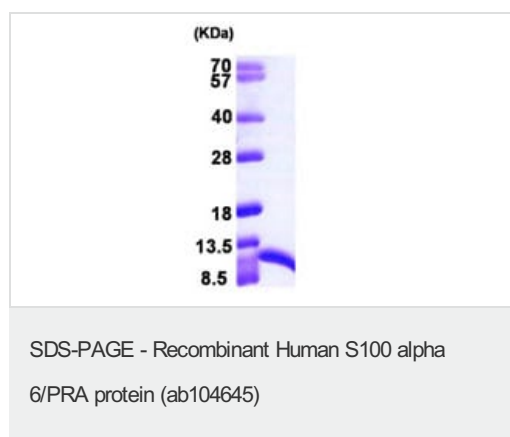
### Cellular localization

Nucleus envelope. Cytoplasm. Cell membrane.

---

## Images

---



15% SDS-PAGE showing ab104645 at approximately 12.3kDa (3µg).

**Please note:** All products are "FOR RESEARCH USE ONLY. NOT FOR USE IN DIAGNOSTIC PROCEDURES"

## Our Promise to you: Quality guaranteed and expert technical support

---

- Replacement or refund for products not performing as stated on the datasheet
- Valid for 12 months from date of delivery
- Response to your inquiry within 24 hours
- We provide support in Chinese, English, French, German, Japanese and Spanish
- Extensive multi-media technical resources to help you
- We investigate all quality concerns to ensure our products perform to the highest standards

If the product does not perform as described on this datasheet, we will offer a refund or replacement. For full details of the Abpromise, please visit <https://www.abcam.com/abpromise> or contact our technical team.

### **Terms and conditions**

---

- Guarantee only valid for products bought direct from Abcam or one of our authorized distributors