

Product datasheet

Recombinant Human S1P1/EDG1 protein ab132072

1 Image

Description

Product name	Recombinant Human S1P1/EDG1 protein	
Expression system	Wheat germ	
Accession	P21453	
Protein length	Full length protein	
Animal free	No	
Nature	Recombinant	
Species	Human	
Sequence	MGPTSVPLVKAHRSSVSDYVNYDIVRHNYTGKLNISADK ENSIKLTSV VFILICCFIILENIFVLLTIWKTKKFHRPMMYFIGNLALS DLLAG VAYTA NLLLSGATTYKLT PAQWFLREGSMFVALSASVFSLLAIAIE RYTMLKMK LHNGSNNFRLFLLISACWVISLILGGLPIMGWNCISALSSCS TVLPLYHK HYILFCTTVFTLLLLSMILYCRISLVRTSRRLTFRKNISKAS RSSEK SLALLKTVIIVLSVFIACWAPLFI LLLL DVGCKVKTC DILFRA EYFLVLA VLNSGTNPIIYTLTNKEMRRAFIRIMSCCKCPSGDSAGKFK RPIAGMEF SRSKSDNSSHPQKDEGDNPETIMSSGNVNSSS	
Predicted molecular weight	69 kDa including tags	
Amino acids	1 to 382	
Tags	GST tag N-Terminus	

Specifications

Our [Abpromise guarantee](#) covers the use of **ab132072** in the following tested applications.

The application notes include recommended starting dilutions; optimal dilutions/concentrations should be determined by the end user.

Applications	Western blot
	SDS-PAGE

	ELISA
Form	Liquid

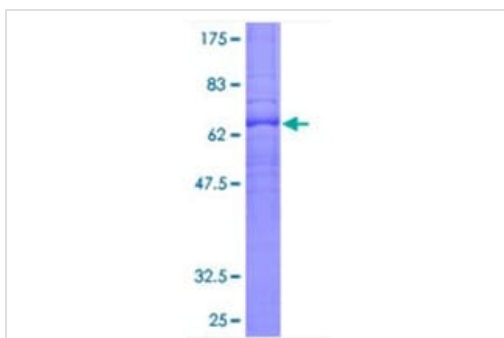
Preparation and Storage

Stability and Storage	Shipped on dry ice. Upon delivery aliquot and store at -80°C. Avoid freeze / thaw cycles. pH: 8.00 Constituents: 0.31% Glutathione, 0.79% Tris HCl
------------------------------	--

General Info

Function	Receptor for the lysosphingolipid sphingosine 1-phosphate (S1P). S1P is a bioactive lysophospholipid that elicits diverse physiological effect on most types of cells and tissues. This inducible epithelial cell G-protein-coupled receptor may be involved in the processes that regulate the differentiation of endothelial cells. Seems to be coupled to the G(i) subclass of heteromeric G proteins.
Tissue specificity	Endothelial cells, and to a lesser extent, in vascular smooth muscle cells, fibroblasts, melanocytes, and cells of epithelioid origin.
Sequence similarities	Belongs to the G-protein coupled receptor 1 family.
Post-translational modifications	S1P-induced endothelial cell migration requires the PKB/AKT1-mediated phosphorylation of the third intracellular loop at the Thr-236 residue.
Cellular localization	Cell membrane.

Images



12.5% SDS-PAGE analysis of ab132072, stained with Coomassie Blue.

SDS-PAGE - Recombinant Human S1P1/EDG1 protein (ab132072)

Please note: All products are "FOR RESEARCH USE ONLY. NOT FOR USE IN DIAGNOSTIC PROCEDURES"

Our Promise to you: Quality guaranteed and expert technical support

- Replacement or refund for products not performing as stated on the datasheet
- Valid for 12 months from date of delivery

- Response to your inquiry within 24 hours
- We provide support in Chinese, English, French, German, Japanese and Spanish
- Extensive multi-media technical resources to help you
- We investigate all quality concerns to ensure our products perform to the highest standards

If the product does not perform as described on this datasheet, we will offer a refund or replacement. For full details of the Abpromise, please visit <https://www.abcam.com/abpromise> or contact our technical team.

Terms and conditions

- Guarantee only valid for products bought direct from Abcam or one of our authorized distributors