

Product datasheet

Recombinant Human SCEL protein ab160194

1 Image

Description

<b>Product name</b>	Recombinant Human SCEL protein	
<b>Expression system</b>	Wheat germ	
<b>Protein length</b>	Protein fragment	
<b>Animal free</b>	No	
<b>Nature</b>	Recombinant	
<b>Species</b>	Human	
<b>Sequence</b>	SNVTLRKMSPTGNEMKSTTQGTRKQQDFHEVNKRRTFL QDNSWIKKRPE EEKDENYGRVVLNRHNSHDALDRKVNERDVPKATISRY SDDTLDR	
<b>Amino acids</b>	2 to 97	
<b>Tags</b>	GST tag N-Terminus	

Specifications

Our [Abpromise guarantee](#) covers the use of **ab160194** in the following tested applications.

The application notes include recommended starting dilutions; optimal dilutions/concentrations should be determined by the end user.

<b>Applications</b>	Western blot
	ELISA
<b>Form</b>	Liquid

Additional notes

Preparation and Storage

<b>Stability and Storage</b>	Shipped on dry ice. Upon delivery aliquot and store at -80°C. Avoid freeze / thaw cycles.
	pH: 8.00
	Constituents: 0.31% Glutathione, 0.79% Tris HCl

General Info

## General info

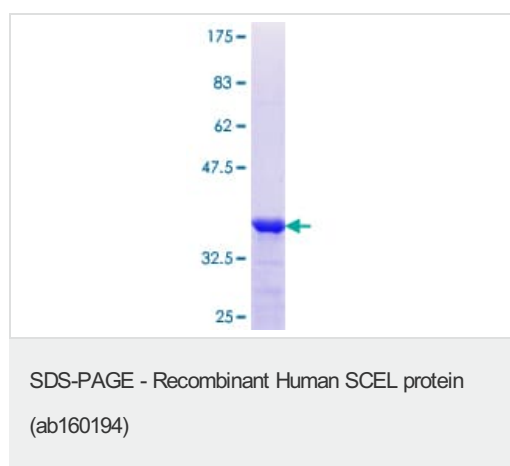
---

<b>Function</b>	May function in the assembly or regulation of proteins in the cornified envelope. The LIM domain may be involved in homotypic or heterotypic associations and may function to localize sciellin to the cornified envelope.
<b>Tissue specificity</b>	Highly expressed in esophagus. It is also expressed in keratinocytes, amniotic tissue, foreskin stratum spinosum and stratum granulosum, hair follicle and nail.
<b>Sequence similarities</b>	Contains 1 LIM zinc-binding domain.
<b>Cellular localization</b>	Cytoplasm. Membrane. May become cross-linked to membrane proteins by transglutaminase.

---

## Images

---



ab160194 on a 12.5% SDS-PAGE stained with Coomassie Blue.

**Please note:** All products are "FOR RESEARCH USE ONLY. NOT FOR USE IN DIAGNOSTIC PROCEDURES"

## Our Abpromise to you: Quality guaranteed and expert technical support

---

- Replacement or refund for products not performing as stated on the datasheet
- Valid for 12 months from date of delivery
- Response to your inquiry within 24 hours
- We provide support in Chinese, English, French, German, Japanese and Spanish
- Extensive multi-media technical resources to help you
- We investigate all quality concerns to ensure our products perform to the highest standards

If the product does not perform as described on this datasheet, we will offer a refund or replacement. For full details of the Abpromise, please visit <https://www.abcam.com/abpromise> or contact our technical team.

## Terms and conditions

---

- Guarantee only valid for products bought direct from Abcam or one of our authorized distributors