

Product datasheet

Recombinant human Sclerostin protein (Active) ab167702

[2 Images](#)

Description

Product name	Recombinant human Sclerostin protein (Active)	
Biological activity	Measured by its binding ability in a functional ELISA. Immobilized ab167702 at 5 µg/mL (100 µL/well) can bind Human LRP-6, Mouse IgG2a Fc Tag with a linear range of 10-78 ng/mL.	
Purity	> 95 % SDS-PAGE.	
Endotoxin level	< 1.000 Eu/µg	
Expression system	HEK 293 cells	
Accession	Q9BQB4	
Protein length	Full length protein	
Animal free	No	
Nature	Recombinant	
Species	Human	
Sequence	QGWQAFKND A TEIPELGEY PEPPPELENN KTMNRAENGG RPPHHPFETK DVSEYSCREL HFTRYVTDGP CRS AKPVTEL VCSGQCGPAR LLPNAIGRGK WWRPSGPDFR CIPDRYRAQR VQLLCPGGEA PRARKVRLVA SCKCKRLTRF HNQSELKDFG TEAARPQKGR KPRPRARSAK ANQAELENAY	
Predicted molecular weight	22 kDa including tags	
Amino acids	24 to 213	
Tags	His tag N-Terminus	

Specifications

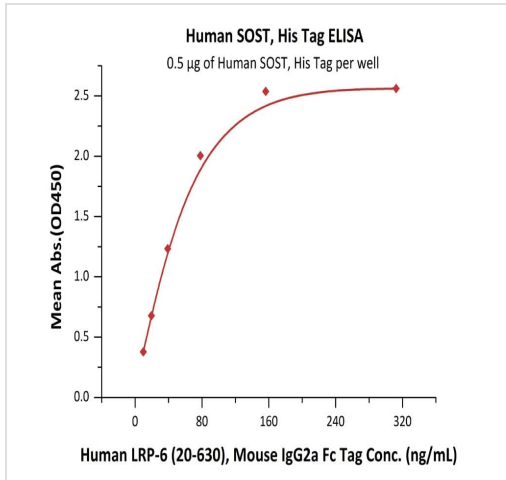
Our [Abpromise guarantee](#) covers the use of **ab167702** in the following tested applications.

The application notes include recommended starting dilutions; optimal dilutions/concentrations should be determined by the end user.

Applications	ELISA
	SDS-PAGE

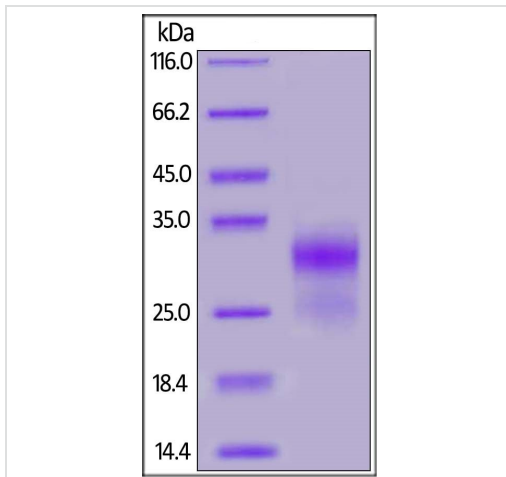
Form	Lyophilized
Additional notes	This product is stable after storage at: -20°C to -70°C for 12 months in lyophilized state; -70°C for 3 months under sterile conditions after reconstitution.
Preparation and Storage	
Stability and Storage	Shipped at 4°C. Upon delivery aliquot. Store at -20°C or -80°C. Avoid freeze / thaw cycle. pH: 7.40 Constituents: 94% PBS, 5% Trehalose This product is an active protein and may elicit a biological response in vivo, handle with caution.
Reconstitution	Reconstitute with sterile deionized water to a concentration of 400 µg/ml.
General Info	
Function	Negative regulator of bone growth.
Tissue specificity	Widely expressed at low levels with highest levels in bone, cartilage, kidney, liver, bone marrow and primary osteoblasts differentiated for 21 days.
Involvement in disease	Defects in SOST are the cause of sclerosteosis (SOST) [MIM:269500]; also known as cortical hyperostosis with syndactyly. SOST is an autosomal recessive sclerosing bone dysplasia characterized by a generalized hyperostosis and sclerosis leading to a markedly thickened skull, with mandible, ribs, clavicles and all long bones also being affected. Due to narrowing of the foramina of the cranial nerves, facial nerve palsy, hearing loss and atrophy of the optic nerves can occur. Sclerosteosis is clinically and radiologically very similar to van Buchem disease, mainly differentiated by hand malformations and a large stature in sclerosteosis patients. Note=A 52 kb deletion downstream of SOST results in SOST transcription suppression and is a cause of van Buchem disease (VBCH) [MIM:239100]; also known as hyperostosis corticalis generalisata. VBCH is an autosomal recessive sclerosing bone dysplasia characterized by endosteal hyperostosis of the mandible, skull, ribs, clavicles, and diaphyses of the long bones. Affected patients present a symmetrically increased thickness of bones, most frequently found as an enlarged jawbone, but also an enlargement of the skull, ribs, diaphysis of long bones, as well as tubular bones of hands and feet. The clinical consequence of increased thickness of the skull include facial nerve palsy causing hearing loss, visual problems, neurological pain, and, very rarely, blindness as a consequence of optic atrophy. Serum alkaline phosphatase levels are elevated.
Sequence similarities	Belongs to the sclerostin family. Contains 1 CTCK (C-terminal cystine knot-like) domain.
Cellular localization	Secreted.

Images



Immobilized ab167702 at 5 µg/mL (100 µL/well) can bind Human LRP-6, Mouse IgG2a Fc Tag with a linear range of 10-78 ng/mL.

ELISA - Recombinant Human Sclerostin protein (ab167702)



SDS-PAGE of reduced ab167702 stained overnight with Coomassie Blue.

SDS-PAGE - Recombinant Human Sclerostin protein (ab167702)

Please note: All products are "FOR RESEARCH USE ONLY. NOT FOR USE IN DIAGNOSTIC PROCEDURES"

Our Abpromise to you: Quality guaranteed and expert technical support

- Replacement or refund for products not performing as stated on the datasheet
- Valid for 12 months from date of delivery
- Response to your inquiry within 24 hours
- We provide support in Chinese, English, French, German, Japanese and Spanish
- Extensive multi-media technical resources to help you

- We investigate all quality concerns to ensure our products perform to the highest standards

If the product does not perform as described on this datasheet, we will offer a refund or replacement. For full details of the Abpromise, please visit <https://www.abcam.com/abpromise> or contact our technical team.

Terms and conditions

- Guarantee only valid for products bought direct from Abcam or one of our authorized distributors