

Product datasheet

Recombinant Human SCY1 like 3 protein ab163501

1 Image

Overview

Product name	Recombinant Human SCY1 like 3 protein
Protein length	Full length protein

Description

Nature	Recombinant
Source	Wheat germ
Amino Acid Sequence	
Species	Human

Sequence	<p> MGENSALKSYTLREPPFTLPSGLAVYPAVLQDGKFA SVFVYKRENEDKV NKAARKHLKTLRHPCLLRFLSCTVEADGIHLVTERVQPL EVALETLSAEV CAGYDILLALIFLHDRGHLTHNNVCLSSVFVSEDGHWK LGGMETVCKVS QATPEFLRSIQSIRDPAIPPEEMSPEFTTLPECHGHAR DAFSFGTLVES LLTILNEQVSADVLSSFQQLHSTLLNPIPKCRPALCTL LSHDFFRNDFL EVVNFLKSLTLKSEEEKTEFFKFLLDREVSLSEELIAS RLVPLLLNQLVF AEPVAVKSFLPYLLGPKKDHAQGETPCLLSPALFQSR VIPVLLQLFEVHE EHVRLVLLSHIEAYVEHFTQEQLKKVILPVLLGLRDTSD DSVAITLHSL AVLVSLLGPEVVVGGERTKIFKRTAPSFTKNTDLSLEG DPFSQPIKFPIN GLSDVKNTSEDSENFSSSKKSEEWPDWSEPEEPE NQTVNIQWPREPCD DVKSQCTTLDVEESSWDDCEPSSLDTKVNPGGGITAT KPVTSAEQKPIPA LLSLTEESMPWKSSLPQKISLVQRGDDADQIEPPKVS SQERPLKVPSELG LGEEFTIQVKKKPVKDPKPEMDWFADMIPEIKPSAAFLILP ELRTEMVPPKD </p>
-----------------	--

DVSPVMQFSSKFAAAEITEGEAEGWEEEGELNWEDN
NW

Amino acids	1 to 688
Tags	GST tag N-Terminus

Specifications

Our [Abpromise guarantee](#) covers the use of **ab163501** in the following tested applications.

The application notes include recommended starting dilutions; optimal dilutions/concentrations should be determined by the end user.

Applications	ELISA Western blot
Form	Liquid
Additional notes	Protein concentration is above or equal to 0.05 mg/ml.

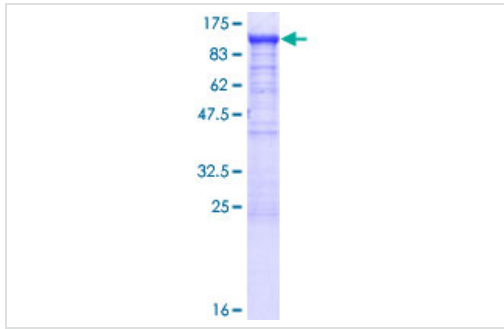
Preparation and Storage

Stability and Storage	Shipped on dry ice. Upon delivery aliquot and store at -80°C. Avoid freeze / thaw cycles. pH: 8.00 Constituents: 0.31% Glutathione, 0.79% Tris HCl
------------------------------	--

General Info

Function	May play a role in regulating cell adhesion/migration complexes in migrating cells.
Tissue specificity	Ubiquitously expressed.
Sequence similarities	Belongs to the protein kinase superfamily. Contains 4 HEAT repeats. Contains 1 protein kinase domain.
Domain	The protein kinase domain is predicted to be catalytically inactive.
Post-translational modifications	May be myristoylated; myristoylation may target it to Golgi compartment. Phosphorylated.
Cellular localization	Cytoplasm. Golgi apparatus. Cell projection > lamellipodium. Colocalized with EZR/VIL2, actin and CD44 in lamellipodia.

Images



ab163501 on a 12.5% SDS-PAGE stained with Coomassie Blue.

SDS-PAGE - Recombinant Human SCY1 like 3 protein (ab163501)

Please note: All products are "FOR RESEARCH USE ONLY AND ARE NOT INTENDED FOR DIAGNOSTIC OR THERAPEUTIC USE"

Our Abpromise to you: Quality guaranteed and expert technical support

- Replacement or refund for products not performing as stated on the datasheet
- Valid for 12 months from date of delivery
- Response to your inquiry within 24 hours

- We provide support in Chinese, English, French, German, Japanese and Spanish
- Extensive multi-media technical resources to help you
- We investigate all quality concerns to ensure our products perform to the highest standards

If the product does not perform as described on this datasheet, we will offer a refund or replacement. For full details of the Abpromise, please visit <https://www.abcam.com/abpromise> or contact our technical team.

Terms and conditions

- Guarantee only valid for products bought direct from Abcam or one of our authorized distributors