

Product datasheet

Recombinant Human SCY1 like 3 protein ab167935

1 Image

Description

Product name Recombinant Human SCY1 like 3 protein

Purity > 85 % Densitometry.

Expression system Baculovirus infected Sf9 cells

Accession [Q8IZE3-2](#)

Protein length Full length protein

Animal free No

Nature Recombinant

Species Human

Sequence

```

GSENSALKSYTLREPPFTLP SGLAVYPAVLQDGKFASVFV
YKRENEDKVN
KAAKHLKTLRHPCLLRFLSCTVEADGHLVTERVQPLEVAL
ETLSSAEVC
AGYDILLALIFLHDRGHLTHNNVCLSSVFVSEDGHWKLG
METVCKVSQ
ATPEFLRSIQSIRD PASIPPEEMSPEFTTLPECHGHARDAF
SFGTLVESL
LTILNEQVSADVLSSFQQLHSTLLNPIPKCRPALCTLLSH
DFFRNDFLE
VVNFKSLTLKSEEEKTEFFKFLDRVSCLSEELIASRLVP
LLLNLQVF A
EPVAVKSFLPYLLGPKKDHAQGETPCLLSPALFQSRVIPV
LLQLFEVHEE
HVRMVLLSHIEAYVEHFTQEQLKKVILPQVLLGLRDTSDSIV
AITLHSLA
VLVSLLGPEVVVGGERTKIFKRTAPSFTKNTDLSLEGDPF
SQPIKFPING
LSDVKNTSEDS ENFPSSSKKSEEWPDWSEPEEPENQTV
NIQWPREPCDD
VKSQCTTL DVEESSWDDCEPSSLDTKVNPGGGITATKPV
TSAEQKPIPAL
LSLTEESMPWKSSLPQKISLVQRGDDADQIEPPKVSSQE
RPLKVPSELGL
GEEFTIQVKKKPKVDPEMDWFADMIPEIKPSAAFLILPELR
    
```

TEMVPPKDD
VSPVMQFSSKFAAAEITEGEAEGWEEEGELNWNW

Predicted molecular weight	110 kDa including tags
Amino acids	2 to 688
Tags	proprietary tag N-Terminus

Specifications

Our [Abpromise guarantee](#) covers the use of **ab167935** in the following tested applications.

The application notes include recommended starting dilutions; optimal dilutions/concentrations should be determined by the end user.

Applications	SDS-PAGE Western blot
Form	Liquid

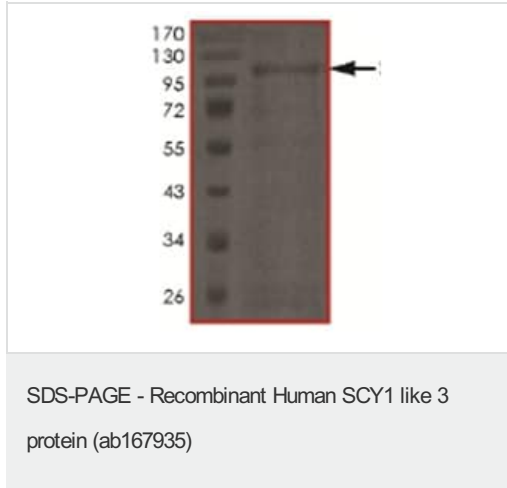
Preparation and Storage

Stability and Storage	Shipped on dry ice. Upon delivery aliquot and store at -80°C. Avoid freeze / thaw cycles. pH: 7.50 Constituents: 0.31% Glutathione, 0.002% PMSF, 0.004% DTT, 0.79% Tris HCl, 0.003% EDTA, 25% Glycerol (glycerin, glycerine), 0.29% Sodium chloride
------------------------------	-----------------------------------------------------------------------------------------------------------------------------------------------------------------------------------------------------------------------------------------------------------

General Info

Function	May play a role in regulating cell adhesion/migration complexes in migrating cells.
Tissue specificity	Ubiquitously expressed.
Sequence similarities	Belongs to the protein kinase superfamily. Contains 4 HEAT repeats. Contains 1 protein kinase domain.
Domain	The protein kinase domain is predicted to be catalytically inactive.
Post-translational modifications	May be myristoylated; myristoylation may target it to Golgi compartment. Phosphorylated.
Cellular localization	Cytoplasm. Golgi apparatus. Cell projection > lamellipodium. Colocalized with EZR/VIL2, actin and CD44 in lamellipodia.

Images



SDS-PAGE analysis of ab167935.

Please note: All products are "FOR RESEARCH USE ONLY. NOT FOR USE IN DIAGNOSTIC PROCEDURES"

Our Abpromise to you: Quality guaranteed and expert technical support

- Replacement or refund for products not performing as stated on the datasheet
- Valid for 12 months from date of delivery
- Response to your inquiry within 24 hours
- We provide support in Chinese, English, French, German, Japanese and Spanish
- Extensive multi-media technical resources to help you
- We investigate all quality concerns to ensure our products perform to the highest standards

If the product does not perform as described on this datasheet, we will offer a refund or replacement. For full details of the Abpromise, please visit <https://www.abcam.com/abpromise> or contact our technical team.

Terms and conditions

- Guarantee only valid for products bought direct from Abcam or one of our authorized distributors