

Product datasheet

Recombinant Human Secretory lectin ZG16 protein
ab117231

1 Image

Description

Product name	Recombinant Human Secretory lectin ZG16 protein
Endotoxin level	< 1.000 Eu/µg
Expression system	Escherichia coli
Accession	O60844
Protein length	Full length protein
Animal free	No
Nature	Recombinant
Species	Human
Sequence	MKHHHHHHAS NAIQARSSSY SGEYGS GGGK RFSHSGNQLD GPITALRVRV NTYYIVGLQV RYGKVWSDYV GGRNGDLEEI FLHPGESVIQ VSGKYKWYLK KLVFVTDKGR YLSFGKDSGT SFNAVPLHPN TVLRFISGRS GSLIDAIGLH WDVYPTSCSR C
Predicted molecular weight	18 kDa including tags
Amino acids	17 to 167
Tags	His tag N-Terminus

Specifications

Our [Abpromise guarantee](#) covers the use of **ab117231** in the following tested applications.

The application notes include recommended starting dilutions; optimal dilutions/concentrations should be determined by the end user.

Applications	Western blot ELISA
Form	Lyophilized

Preparation and Storage

Stability and Storage Shipped at 4°C. Store at +4°C short term (1-2 weeks). Upon delivery aliquot. Store at -80°C.

Avoid freeze / thaw cycle.

Constituents: 0.69% Phosphate Buffer, 0.45% Sodium chloride

Reconstitution

Add deionized water to prepare a working stock solution of approximately 0.5 mg/mL and let the lyophilized pellet dissolve completely. Product is not sterile! Please filter the product by an appropriate sterile filter before using it in the cell culture.

General Info

Function

May play a role in protein trafficking. May act as a linker molecule between the submembranous matrix on the luminal side of zymogen granule membrane (ZGM) and aggregated secretory proteins during granule formation in the TGN.

Tissue specificity

Highly expressed in liver. Detected at lower levels in colon, ileum and jejunum.

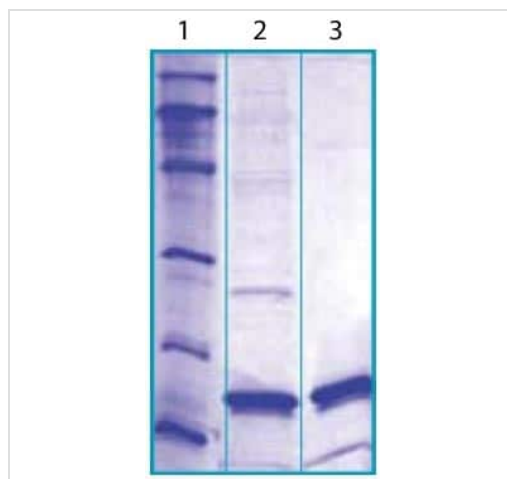
Sequence similarities

Belongs to the jacalin lectin family.

Cellular localization

Secreted > extracellular space > extracellular matrix. Cytoplasmic vesicle lumen. Golgi apparatus lumen. Stored in zymogen granules.

Images



14% SDS-PAGE of Human Secretory lectin ZG16 protein

1. M.W. marker - 97, 66, 45, 31, 21, 14 kDa

2. Reduced and boiled sample, 5µg/lane

3. Non-reduced and non-boiled sample, 5µg/lane

SDS-PAGE - Recombinant Human Secretory lectin
ZG16 protein (ab117231)

Please note: All products are "FOR RESEARCH USE ONLY. NOT FOR USE IN DIAGNOSTIC PROCEDURES"

Our Abpromise to you: Quality guaranteed and expert technical support

- Replacement or refund for products not performing as stated on the datasheet
- Valid for 12 months from date of delivery
- Response to your inquiry within 24 hours
- We provide support in Chinese, English, French, German, Japanese and Spanish
- Extensive multi-media technical resources to help you

- We investigate all quality concerns to ensure our products perform to the highest standards

If the product does not perform as described on this datasheet, we will offer a refund or replacement. For full details of the Abpromise, please visit <https://www.abcam.com/abpromise> or contact our technical team.

Terms and conditions

- Guarantee only valid for products bought direct from Abcam or one of our authorized distributors