

Product datasheet

Recombinant Human SEMA3D protein ab153630

1 Image

Description

Product name	Recombinant Human SEMA3D protein
Expression system	Wheat germ
Protein length	Full length protein
Animal free	No
Nature	Recombinant
Species	Human
Sequence	<p>MADIRAVFNGPYAHKESADHRWVQYDGRIPYPRPGTCPS KTYDPLIKSTR DFPDDVISFIKRHSVMYKSVYPVAGGPTFKRINVDYRLTQV VDHVIAED GQYDVMFLGTDIGTVLKVVSSISKEKWNMEEVVLEELQIFK HSSIILNMEL SLKQQQLYIGSRDGLVQLSLHRCDTYGKACADCCLARDP YCAWDGNACSR YAPTSKRRARRQDVKYGDPITQCWDIEDSISHETADEKVIF GIEFNSTFL ECIPKSQQATIKWYIQRSGDEHREELKPDERIIKTEYGLLIRS LQKKDSG MYYCKAQEHTFIHTVTKLTLNVIENEQMENTQRAEHEEGKV KDLLAESRL RYKDYIQLSSPNFSLDQYCEQMWHREKRRQRNKGGPKW KHMQEMKKKRN RRHHRDLDELPRAVAT</p>
Amino acids	1 to 416
Tags	GST tag N-Terminus

Specifications

Our [Abpromise guarantee](#) covers the use of **ab153630** in the following tested applications.

The application notes include recommended starting dilutions; optimal dilutions/concentrations should be determined by the end user.

Applications	ELISA Western blot
Form	Liquid

Additional notes

This product was previously labelled as Semaphorin 3D.

Preparation and Storage

Stability and Storage

Shipped on dry ice. Upon delivery aliquot and store at -80°C. Avoid freeze / thaw cycles.

pH: 8.00

Constituents: 0.31% Glutathione, 0.79% Tris HCl

General Info

Function

Induces the collapse and paralysis of neuronal growth cones. Could potentially act as repulsive cues toward specific neuronal populations. Binds to neuropilin.

Sequence similarities

Belongs to the semaphorin family.

Contains 1 Ig-like C2-type (immunoglobulin-like) domain.

Contains 1 PSI domain.

Contains 1 Sema domain.

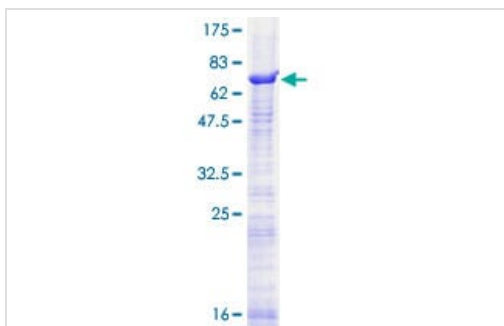
Domain

Strong binding to neuropilin is mediated by the carboxy third of the protein.

Cellular localization

Secreted.

Images



ab153630 on a 12.5% SDS-PAGE stained with Coomassie Blue.

SDS-PAGE - Recombinant Human SEMA3D protein
(ab153630)

Please note: All products are "FOR RESEARCH USE ONLY. NOT FOR USE IN DIAGNOSTIC PROCEDURES"

Our Abpromise to you: Quality guaranteed and expert technical support

- Replacement or refund for products not performing as stated on the datasheet
- Valid for 12 months from date of delivery
- Response to your inquiry within 24 hours
- We provide support in Chinese, English, French, German, Japanese and Spanish

- Extensive multi-media technical resources to help you
- We investigate all quality concerns to ensure our products perform to the highest standards

If the product does not perform as described on this datasheet, we will offer a refund or replacement. For full details of the Abpromise, please visit <https://www.abcam.com/abpromise> or contact our technical team.

Terms and conditions

- Guarantee only valid for products bought direct from Abcam or one of our authorized distributors