

Product datasheet

Recombinant Human SEMA6D protein ab164191

1 Image

Description

<b>Product name</b>	Recombinant Human SEMA6D protein	
<b>Expression system</b>	Wheat germ	
<b>Accession</b>	<a href="#">Q8NFY4</a>	
<b>Protein length</b>	Protein fragment	
<b>Animal free</b>	No	
<b>Nature</b>	Recombinant	
<b>Species</b>	Human	
<b>Sequence</b>	KLQNIHPLTKSSSKRDHRRSVDSRNTLNDLLKHLNDPNS NPKAIMGDIQ MAHQNLMLDPMGSMSEVPPKVPNREASLYSPPSTLPRN S	
<b>Amino acids</b>	852 to 940	
<b>Tags</b>	GST tag N-Terminus	

Specifications

Our [Abpromise guarantee](#) covers the use of **ab164191** in the following tested applications.

The application notes include recommended starting dilutions; optimal dilutions/concentrations should be determined by the end user.

<b>Applications</b>	Western blot
	ELISA

<b>Form</b>	Liquid
-------------	--------

Additional notes

Preparation and Storage

<b>Stability and Storage</b>	Shipped on dry ice. Upon delivery aliquot and store at -80°C. Avoid freeze / thaw cycles. pH: 8.00 Constituents: 0.31% Glutathione, 0.79% Tris HCl
------------------------------	--

## General Info

---

### Relevance

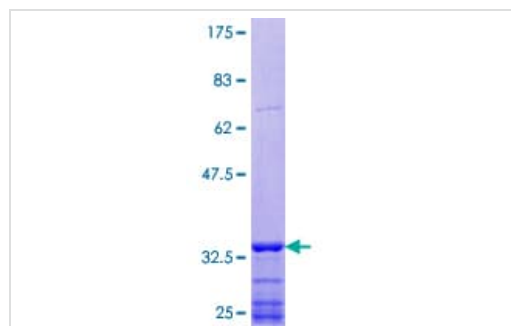
SEMA6D belongs to the semaphorin family of proteins, which are a large family of secreted and transmembrane proteins, some of which function as repellent signals during axon guidance. SEMA6D shows growth cone collapsing activity on dorsal root ganglion (DRG) neurons in vitro and may be a stop signal for DRG neurons in their target areas, and possibly also for other neurons. It may also be involved in the maintenance and remodeling of neuronal connections.

### Cellular localization

Isoforms 1-6: Cell membrane; Single-pass type I membrane protein. Isoform 7: Cytoplasm.

## Images

---



ab164191 on a 12.5% SDS-PAGE stained with Coomassie Blue.

SDS-PAGE - Recombinant Human SEMA6D protein  
(ab164191)

**Please note:** All products are "FOR RESEARCH USE ONLY. NOT FOR USE IN DIAGNOSTIC PROCEDURES"

## Our Abpromise to you: Quality guaranteed and expert technical support

---

- Replacement or refund for products not performing as stated on the datasheet
- Valid for 12 months from date of delivery
- Response to your inquiry within 24 hours
- We provide support in Chinese, English, French, German, Japanese and Spanish
- Extensive multi-media technical resources to help you
- We investigate all quality concerns to ensure our products perform to the highest standards

If the product does not perform as described on this datasheet, we will offer a refund or replacement. For full details of the Abpromise, please visit <https://www.abcam.com/abpromise> or contact our technical team.

## Terms and conditions

---

- Guarantee only valid for products bought direct from Abcam or one of our authorized distributors