

Product datasheet

Recombinant Human SEPT7 protein ab158072

1 Image

Description

Product name	Recombinant Human SEPT7 protein
Expression system	Wheat germ
Protein length	Full length protein
Animal free	No
Nature	Recombinant
Species	Human
Sequence	<p>MVAQQKNLEGYVGFANLPNQVYRKSVKRGFEFTLMVVGE SGLGKSTLINS LFLTDLYSPEYPGSPHRIKKTQVEQSKVLKEGGVQLLLTI VDTPGFGD AVDNSNCWQPVIDYIDSKFEDYLNESRVNRRQMPDNRV QCCLYFIAPSG HGLKPLDIEFMKRLHEKVNIIPLIAKADTLTPEECQQFKKQI MKEIQEHK IKYEFPETDDEEENKLVKKIKDRLPLAVVGSNTIIEVNGKRV RGRQYPW GVAEVENGEHCDFILRNMLIRTHMQDLKDVTTNNVHYENY RSRKLAAVTY NGVDNNKNKGQLTKSPLAQMEEERREHVAKMKKMEME MEQVFEMKVKEKV QKLKDSEAEQRRHEQMKNLEAQHKELEEKRRQFEDE KANWEAQQRILEQQNSSRTLEKNKKKGKIF</p>
Amino acids	1 to 418
Tags	GST tag N-Terminus

Specifications

Our [Abpromise guarantee](#) covers the use of **ab158072** in the following tested applications.
The application notes include recommended starting dilutions; optimal dilutions/concentrations should be determined by the end user.

Applications	ELISA Western blot
Form	Liquid

Additional notes

Preparation and Storage

Stability and Storage

Shipped on dry ice. Upon delivery aliquot and store at -80°C. Avoid freeze / thaw cycles.

pH: 8.00

Constituents: 0.31% Glutathione, 0.79% Tris HCl

General Info

Function

Filament-forming cytoskeletal GTPase. Required for normal organization of the actin cytoskeleton. Required for normal progress through mitosis. Involved in cytokinesis. Required for normal association of CENPE with the kinetochore. Plays a role in ciliogenesis and collective cell movements.

Tissue specificity

Widely expressed.

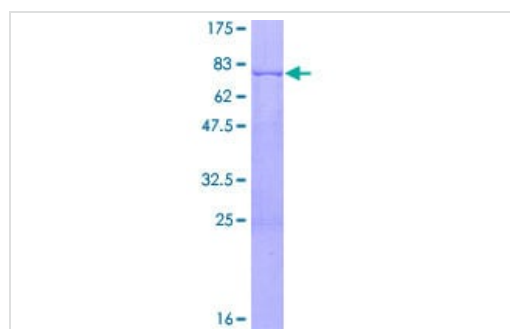
Sequence similarities

Belongs to the septin family.

Cellular localization

Cytoplasm. Chromosome > centromere > kinetochore. Cytoplasm > cytoskeleton > spindle. Cleavage furrow. Midbody. Cytoplasm > cytoskeleton > cilium axoneme. Distributed throughout the cytoplasm in prometaphase cells. Associated with the spindle during metaphase. Associated with the central spindle and at the cleavage furrow in anaphase cells. Detected at the midbody in telophase. Associated with actin stress fibers.

Images



SDS-PAGE - Recombinant Human SEPT7 protein
(ab158072)

ab158072 on a 12.5% SDS-PAGE stained with Coomassie Blue.

Please note: All products are "FOR RESEARCH USE ONLY. NOT FOR USE IN DIAGNOSTIC PROCEDURES"

Our Promise to you: Quality guaranteed and expert technical support

- Replacement or refund for products not performing as stated on the datasheet
- Valid for 12 months from date of delivery

- Response to your inquiry within 24 hours
- We provide support in Chinese, English, French, German, Japanese and Spanish
- Extensive multi-media technical resources to help you
- We investigate all quality concerns to ensure our products perform to the highest standards

If the product does not perform as described on this datasheet, we will offer a refund or replacement. For full details of the Abpromise, please visit <https://www.abcam.com/abpromise> or contact our technical team.

Terms and conditions

- Guarantee only valid for products bought direct from Abcam or one of our authorized distributors