

Product datasheet

Recombinant human Serpin A5 protein (Active)  
ab229370

1 Image

Description

<b>Product name</b>	Recombinant human Serpin A5 protein (Active)
<b>Biological activity</b>	Measured by its ability to inhibit Thrombin cleavage of substrate Boc-VPR-AMC. The IC <sub>50</sub> for this effect is less or equal to 2 nM.
<b>Purity</b>	> 90 % SDS-PAGE. ab229370 was purified using conventional chromatography techniques.
<b>Expression system</b>	Escherichia coli
<b>Accession</b>	<a href="#">P05154</a>
<b>Protein length</b>	Full length protein
<b>Animal free</b>	No
<b>Nature</b>	Recombinant
<b>Species</b>	Human
<b>Sequence</b>	<p>MGSSHHHHHHSSGLVPRGSHMHRHHPREMKKRVED  LHVGATVAPSSRRDF  TFDLYRALASAAPSQNIFFSPVSISSLAMLSLGAGSS  TKMQILEGLGLN  LQKSSEKELHRGFQQLLQELNQPRDGFQLSLGNALFT  DLVVDLQDTFVSA  MKTLYLADTFPTNFRDSAGAMKQINDYVAKQTKGKIVD  LLKNLDSNAVVI  MVNYIFFKAKWETSFNHKGTEQDFYVTSETVVRVPM  MSREDQYHYLLDR  NLSCRVVGVPYQGNATALFILPSEGKMQQVENGLSEK  TLRKWLKMFKKRQ  LELYLPKFSIEGSYQLEKVLPSLGISNVFTSHADLSGISN  HSNIQVSEMV  HKAVVEVDESGTRAAAATGTIFTFRSARLNSQRLVFNR  PFLMFIVDNNIL FLGKVNRP</p>
<b>Predicted molecular weight</b>	46 kDa including tags
<b>Amino acids</b>	20 to 406
<b>Tags</b>	His tag N-Terminus
<b>Additional sequence information</b>	This product is the full length protein from aa 20 to 406 including the propeptide. The signal

peptide is not included (AAH08915).

## Specifications

---

Our [Abpromise guarantee](#) covers the use of **ab229370** in the following tested applications.

The application notes include recommended starting dilutions; optimal dilutions/concentrations should be determined by the end user.

<b>Applications</b>	Mass Spectrometry SDS-PAGE Functional Studies
<b>Mass spectrometry</b>	MALDI-TOF
<b>Form</b>	Liquid
<b>Additional notes</b>	Previously labelled as Protein C inhibitor.

## Preparation and Storage

---

<b>Stability and Storage</b>	Shipped at 4°C. Store at +4°C short term (1-2 weeks). Upon delivery aliquot. Store at -20°C or -80°C. Avoid freeze / thaw cycle.  pH: 6.00 Constituents: 0.39% MES, 0.87% Sodium chloride, 10% Glycerol  This product is an active protein and may elicit a biological response in vivo, handle with caution.
------------------------------	--

## General Info

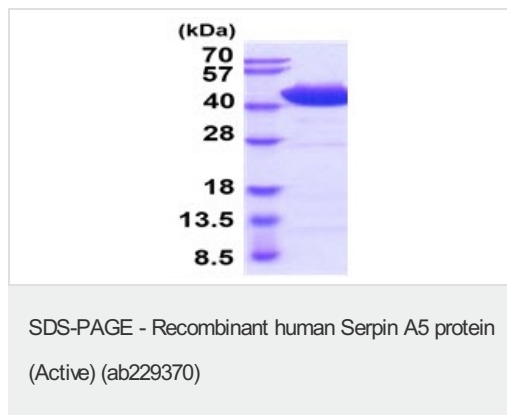
---

<b>Function</b>	Inhibits activated protein C as well as plasminogen activators.
<b>Tissue specificity</b>	Expressed by the liver and secreted in plasma.
<b>Sequence similarities</b>	Belongs to the serpin family.
<b>Cellular localization</b>	Secreted.

---

## Images

---



15% SDS-PAGE analysis of 3 µg ab229370.

**Please note:** All products are "FOR RESEARCH USE ONLY. NOT FOR USE IN DIAGNOSTIC PROCEDURES"

## **Our Abpromise to you: Quality guaranteed and expert technical support**

---

- Replacement or refund for products not performing as stated on the datasheet
- Valid for 12 months from date of delivery
- Response to your inquiry within 24 hours
  
- We provide support in Chinese, English, French, German, Japanese and Spanish
- Extensive multi-media technical resources to help you
- We investigate all quality concerns to ensure our products perform to the highest standards

If the product does not perform as described on this datasheet, we will offer a refund or replacement. For full details of the Abpromise, please visit <https://www.abcam.com/abpromise> or contact our technical team.

## **Terms and conditions**

---

- Guarantee only valid for products bought direct from Abcam or one of our authorized distributors