

## Product datasheet

# Recombinant Human SERPINA10 protein ab162436

1 Image

### Overview

|                       |                                     |
|-----------------------|-------------------------------------|
| <b>Product name</b>   | Recombinant Human SERPINA10 protein |
| <b>Protein length</b> | Full length protein                 |

### Description

|                            |                                                                                                                                                                                                                                                                                                                                                                                                                                                                                                      |
|----------------------------|------------------------------------------------------------------------------------------------------------------------------------------------------------------------------------------------------------------------------------------------------------------------------------------------------------------------------------------------------------------------------------------------------------------------------------------------------------------------------------------------------|
| <b>Nature</b>              | Recombinant                                                                                                                                                                                                                                                                                                                                                                                                                                                                                          |
| <b>Source</b>              | Wheat germ                                                                                                                                                                                                                                                                                                                                                                                                                                                                                           |
| <b>Amino Acid Sequence</b> |                                                                                                                                                                                                                                                                                                                                                                                                                                                                                                      |
| <b>Species</b>             | Human                                                                                                                                                                                                                                                                                                                                                                                                                                                                                                |
| <b>Sequence</b>            | LAPSPQSPETPAPQNQTSRVVQAPKEEEEDEQEASE<br>EKASEEEKAWLMAS<br>RQQLAKETSNGFSLLRKISMRHDGNMVFSPFGMSLA<br>MTGLMLGATGPTE<br>TQIKRGLHLQALKPTKPGLLPSLFKGLRETL SRNLELGL<br>TQGSFAFIHKD<br>FDVKETFFNLSKRYFDTECVPMNFRNASQAKRLMNHY<br>INKETR GKIPKLF<br>DEINPETKLILVDYILFKGKWLTPFDPVFTEVDTFHLDKY<br>KTIKVPMMYG<br>AGKFASTFDKNFRCHVLKLPYQGNATMLVVLMEKMG<br>DHLALEDYLTDDL<br>ETWLRNMKTRNMEVFFPKFKLDQKYEMHELLRQMGR<br>RIFSPFADLSELS<br>ATGRNLQVSRVLQRTVIEVDERGTEAVAGILSEITAYSM<br>PPVIKVD RPFH FMIYEETSGMLLFLGRVVNPTLL |
| <b>Amino acids</b>         | 22 to 444                                                                                                                                                                                                                                                                                                                                                                                                                                                                                            |
| <b>Tags</b>                | proprietary tag N-Terminus                                                                                                                                                                                                                                                                                                                                                                                                                                                                           |

### Specifications

Our [Abpromise guarantee](#) covers the use of **ab162436** in the following tested applications.

The application notes include recommended starting dilutions; optimal dilutions/concentrations should be determined by the end user.

|                     |       |
|---------------------|-------|
| <b>Applications</b> | ELISA |
|---------------------|-------|

|                         |                                                        |
|-------------------------|--------------------------------------------------------|
|                         | Western blot                                           |
| <b>Form</b>             | Liquid                                                 |
| <b>Additional notes</b> | Protein concentration is above or equal to 0.05 mg/ml. |

## Preparation and Storage

---

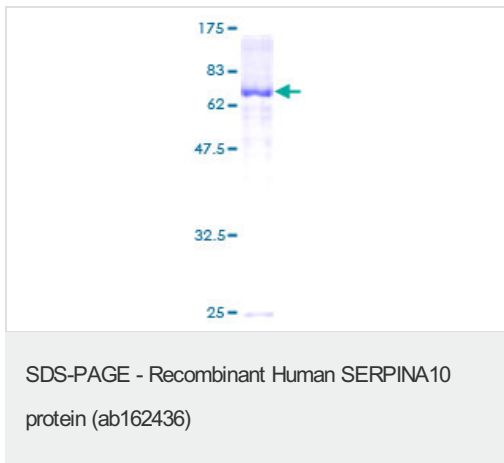
|                              |                                                                                                                                                          |
|------------------------------|----------------------------------------------------------------------------------------------------------------------------------------------------------|
| <b>Stability and Storage</b> | Shipped on dry ice. Upon delivery aliquot and store at -80°C. Avoid freeze / thaw cycles.<br>pH: 8.00<br>Constituents: 0.31% Glutathione, 0.79% Tris HCl |
|------------------------------|----------------------------------------------------------------------------------------------------------------------------------------------------------|

## General Info

---

## Images

---



ab162436 on a 12.5% SDS-PAGE stained with Coomassie Blue.

**Please note:** All products are "FOR RESEARCH USE ONLY AND ARE NOT INTENDED FOR DIAGNOSTIC OR THERAPEUTIC USE"

## Our Abpromise to you: Quality guaranteed and expert technical support

---

- Replacement or refund for products not performing as stated on the datasheet
- Valid for 12 months from date of delivery
- Response to your inquiry within 24 hours
- We provide support in Chinese, English, French, German, Japanese and Spanish
- Extensive multi-media technical resources to help you
- We investigate all quality concerns to ensure our products perform to the highest standards

If the product does not perform as described on this datasheet, we will offer a refund or replacement. For full details of the Abpromise, please visit <https://www.abcam.com/abpromise> or contact our technical team.

## Terms and conditions

---

- Guarantee only valid for products bought direct from Abcam or one of our authorized distributors