

Product datasheet

Recombinant Human SETBP1 protein ab161881

1 Image

Overview

Product name	Recombinant Human SETBP1 protein
Protein length	Full length protein

Description

Nature	Recombinant
Source	Wheat germ
Amino Acid Sequence	
Species	Human
Sequence	MESRETLSSSRQRGGESDFLPVSSAKPPAAPGCAGE PLLSTPGPGKGIPV GGERMEPEEEDELGSGRDVDSNSNADSEKWWAGDG LEEQEFSIKEANFTE GSLKLIKQTTKRAKKPPKNLENYICPPEIKITIKQSGDQK VSRAGKNSKA TKEEERSHSHKKLLTASDLAASDLKGFQPQIKDSSKE EVWKRRGGQGIPF KKQFLSQERAMCFSCPRNPFPAKPGSLTLPFHSEPA VWAQEV
Amino acids	1 to 242
Tags	GST tag N-Terminus

Specifications

Our [Abpromise guarantee](#) covers the use of **ab161881** in the following tested applications.

The application notes include recommended starting dilutions; optimal dilutions/concentrations should be determined by the end user.

Applications	Western blot ELISA
Form	Liquid
Additional notes	Protein concentration is above or equal to 0.05 mg/ml.

Preparation and Storage

Stability and Storage

Shipped on dry ice. Upon delivery aliquot and store at -80°C. Avoid freeze / thaw cycles.

pH: 8.00

Constituents: 0.31% Glutathione, 0.79% Tris HCl

General Info

Tissue specificity

Expressed in numerous tissues.

Involvement in disease

Defects in SETBP1 are the cause of Schinzel-Giedion midface retraction syndrome (SGMFS) [MIM:269150]. It is a disorder characterized by severe mental retardation, distinctive facial features, and multiple congenital malformations including skeletal abnormalities, genitourinary and renal malformations, cardiac defects, as well as a higher-than-normal prevalence of tumors, notably neuroepithelial neoplasia.

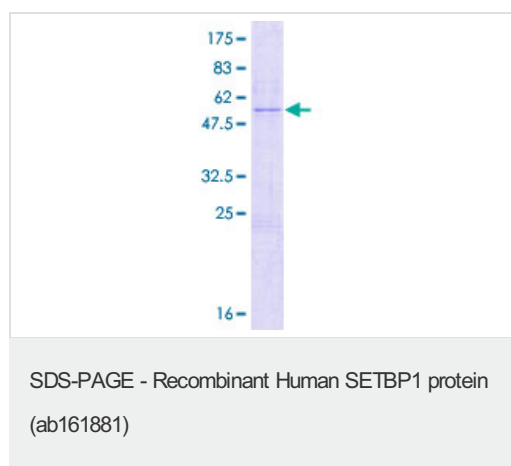
Sequence similarities

Contains 3 A.T hook DNA-binding domains.

Cellular localization

Nucleus.

Images



ab161881 on a 12.5% SDS-PAGE stained with Coomassie Blue.

Please note: All products are "FOR RESEARCH USE ONLY. NOT FOR USE IN DIAGNOSTIC PROCEDURES"

Our Abpromise to you: Quality guaranteed and expert technical support

- Replacement or refund for products not performing as stated on the datasheet
- Valid for 12 months from date of delivery
- Response to your inquiry within 24 hours
- We provide support in Chinese, English, French, German, Japanese and Spanish
- Extensive multi-media technical resources to help you
- We investigate all quality concerns to ensure our products perform to the highest standards

If the product does not perform as described on this datasheet, we will offer a refund or replacement. For full details of the Abpromise, please visit <https://www.abcam.com/abpromise> or contact our technical team.

Terms and conditions

- Guarantee only valid for products bought direct from Abcam or one of our authorized distributors