

Product datasheet

Recombinant Human SEZ6L2 protein ab161979

1 Image

Description

Product name	Recombinant Human SEZ6L2 protein
Expression system	Wheat germ
Protein length	Full length protein
Animal free	No
Nature	Recombinant
Species	Human

Sequence

```

MGTPRAQHPPPPQLLFLILLSCPWIQGLPLKEEEILPEP
GSETPTVASEA
LAELLHGALLRRGPEMGYLPGSDPDPTLATPPAGQTL
AVPSLPRATEPGT
GPLTTAVTPNGVRGAGPTAPELLTPPPGTTAPPPSP
ASPGPPLGPEGGE
EETTTTITTTTITTTVTSPAYLLSCGFPPRPAHGDVSVT
DLHPGGTATF
HCDSGYQLQGEETLCLNGTRPSWNGETPSCMASCG
GTIHNATLGRMVSP
EPGGAVGPNLTCRWVIEAAEGRRLHLHFERVSLDEDN
DRLMVRSGGSPLS
PVIYDSDMDDVPERGLISDAQSLYVLLSETPANPLLL
SLRFEAFEEDRC
FAPFLAHGNVTTTDPEYRPGALATFSCLPGYALEPPG
PPNAIECVDPTEP
HWNDETPACKAMCGGELSEPAGVVLSPDWPQSYSP
GQDCVWGVHVQEEKR
ILLQVEILNVREGDMLTLFDGDGPSARVLAQLRGPQPR
RRLSSGPDRTL
QFQAPPGPPNPGLGQGFVLHFKEVPRNDTCPELPPP
EWGVRTASHGDLIR
GTVLTYQCEPGYELLGSDILTCQWDLSSWAAPPACQK
IMTCADPGEIANG
HRTASDAGFPVGS HVQYRCLPGYSLEGAAMLTCYSR
DTGTPKWSDRV PKC
ALKYEPCLNPGVPENGYQTLYKH HYQAGESLRFFCYE
GFELIGEVTTICV
PGHPSQWTSQPPLCKVAYEELLNDRKLEVTQTDDPSR
    
```

QLEGGNLALAILL
PLGLV/MLGSGVYYTKLQGKSLFGFSGSHSYSPITVES
DFSNPLYEAG DTREYEVSI

Amino acids 1 to 809
Tags GST tag N-Terminus

Specifications

Our [Abpromise guarantee](#) covers the use of **ab161979** in the following tested applications.

The application notes include recommended starting dilutions; optimal dilutions/concentrations should be determined by the end user.

Applications ELISA
Western blot

Form Liquid

Additional notes Protein concentration is above or equal to 0.05 mg/ml.

Preparation and Storage

Stability and Storage Shipped on dry ice. Upon delivery aliquot and store at -80°C. Avoid freeze / thaw cycles.
pH: 8.00
Constituents: 0.31% Glutathione, 0.79% Tris HCl

General Info

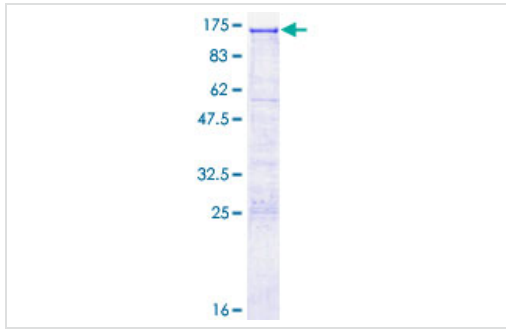
Function May contribute to specialized endoplasmic reticulum functions in neurons.

Sequence similarities Belongs to the SEZ6 family.
Contains 3 CUB domains.
Contains 5 Sushi (CCP/SCR) domains.

Post-translational modifications O-glycosylated with core 1 or possibly core 8 glycans.

Cellular localization Cell membrane. Endoplasmic reticulum membrane. Detected on cell surface of lung-cancer.

Images



ab161979 on a 12.5% SDS-PAGE stained with Coomassie Blue.

SDS-PAGE - Recombinant Human SEZ6L2 protein
(ab161979)

Please note: All products are "FOR RESEARCH USE ONLY. NOT FOR USE IN DIAGNOSTIC PROCEDURES"

Our Abpromise to you: Quality guaranteed and expert technical support

- Replacement or refund for products not performing as stated on the datasheet
- Valid for 12 months from date of delivery
- Response to your inquiry within 24 hours

- We provide support in Chinese, English, French, German, Japanese and Spanish
- Extensive multi-media technical resources to help you
- We investigate all quality concerns to ensure our products perform to the highest standards

If the product does not perform as described on this datasheet, we will offer a refund or replacement. For full details of the Abpromise, please visit <https://www.abcam.com/abpromise> or contact our technical team.

Terms and conditions

- Guarantee only valid for products bought direct from Abcam or one of our authorized distributors