

Product datasheet

Recombinant Human SF3B3 protein ab153230

1 Image

Description

<b>Product name</b>	Recombinant Human SF3B3 protein	
<b>Expression system</b>	Wheat germ	
<b>Protein length</b>	Protein fragment	
<b>Animal free</b>	No	
<b>Nature</b>	Recombinant	
<b>Species</b>	Human	
<b>Sequence</b>	MAEEMVEAAGEDERELAAEMAAFLNENLPESIFGAPKA GNGQWASVIRV MNPIQGNTLDLVQLEQNEAAFSVAVCRFSNTGEDWYVLV GVAKDLILNPR SVAGGFVYTYK	
<b>Amino acids</b>	819 to 929	
<b>Tags</b>	GST tag N-Terminus	

Specifications

Our [Abpromise guarantee](#) covers the use of **ab153230** in the following tested applications.

The application notes include recommended starting dilutions; optimal dilutions/concentrations should be determined by the end user.

<b>Applications</b>	ELISA
	Western blot
<b>Form</b>	Liquid

Additional notes

Preparation and Storage

<b>Stability and Storage</b>	Shipped on dry ice. Upon delivery aliquot and store at -80°C. Avoid freeze / thaw cycles.
	pH: 8.00
	Constituents: 0.31% Glutathione, 0.79% Tris HCl

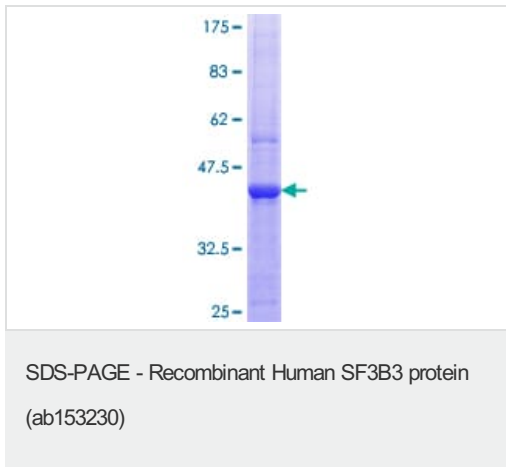
General Info

<b>Function</b>	Subunit of the splicing factor SF3B required for 'A' complex assembly formed by the stable binding of U2 snRNP to the branchpoint sequence (BPS) in pre-mRNA. Sequence independent binding of SF3A/SF3B complex upstream of the branch site is essential, it may anchor U2 snRNP to the pre-mRNA. May also be involved in the assembly of the 'E' complex. Belongs also to the minor U12-dependent spliceosome, which is involved in the splicing of rare class of nuclear pre-mRNA intron.
<b>Sequence similarities</b>	Belongs to the RSE1 family.
<b>Cellular localization</b>	Nucleus.

---

## Images

---



ab153230 on a 12.5% SDS-PAGE stained with Coomassie Blue.

**Please note:** All products are "FOR RESEARCH USE ONLY. NOT FOR USE IN DIAGNOSTIC PROCEDURES"

## Our Abpromise to you: Quality guaranteed and expert technical support

---

- Replacement or refund for products not performing as stated on the datasheet
- Valid for 12 months from date of delivery
- Response to your inquiry within 24 hours
- We provide support in Chinese, English, French, German, Japanese and Spanish
- Extensive multi-media technical resources to help you
- We investigate all quality concerns to ensure our products perform to the highest standards

If the product does not perform as described on this datasheet, we will offer a refund or replacement. For full details of the Abpromise, please visit <https://www.abcam.com/abpromise> or contact our technical team.

## Terms and conditions

---

- Guarantee only valid for products bought direct from Abcam or one of our authorized distributors