

Product datasheet

Recombinant human SGK2 protein (Active) ab261921

2 Images

Description

Product name	Recombinant human SGK2 protein (Active)	
Biological activity	The specific activity of SGK2 was determined to be 74 nmol/min/mg.	
Purity	> 90 % Densitometry. Affinity purified.	
Expression system	Baculovirus infected Sf9 cells	
Accession	Q9HBY8	
Protein length	Full length protein	
Animal free	No	
Nature	Recombinant	
Species	Human	
Sequence	MNSSPAGTPSPQPSRANGNINLGPSANPNAQPTDFDFLK VIGKGNYGKVL LAKRKSDGAFYAVKVLQKKSILKKKEQSHIMAERSVLLKN VRHPFLVGLR YSFQTPEKLYFVLDYVNGGELFFHLQRERRFLEPRARFYA AEVASAIGYL HSLNIYRDLKPENILLDCQGHVVL TDFGLCKEGVEPEDTT STFCGTPEY LAPEVLRKEPYDRAVDWWCLGAVLYEMLHGLPPFYSQD VSQMYENILHQP LQIPGGRTVAACDLLQSLHDKDQRQLGSKADFLEIKNHV FFSPINWDDL YHKRLTPPFNPNVTGPADLKHFDPFTQEAVSKSIGCTPD TVASSSGASS AFLGFSYAPEDDDILDC	
Predicted molecular weight	71 kDa including tags	
Amino acids	1 to 427	
Tags	GST tag N-Terminus	

Specifications

Our [Abpromise guarantee](#) covers the use of **ab261921** in the following tested applications.

The application notes include recommended starting dilutions; optimal dilutions/concentrations should be determined by the end user.

Applications Functional Studies

SDS-PAGE

Form Liquid

Preparation and Storage

Stability and Storage Shipped on Dry Ice. Upon delivery aliquot. Store at -80°C. Avoid freeze / thaw cycle.

pH: 7.50

Constituents: 0.0038% EGTA, 0.00174% PMSF, 0.00385% DTT, 0.79% Tris HCl, 0.00292% EDTA, 25% Glycerol (glycerin, glycerine), 0.87% Sodium chloride

This product is an active protein and may elicit a biological response in vivo, handle with caution.

General Info

Function Involved in the activation of potassium channels.

Tissue specificity Highly expressed in liver, kidney and pancreas, and at lower levels in brain.

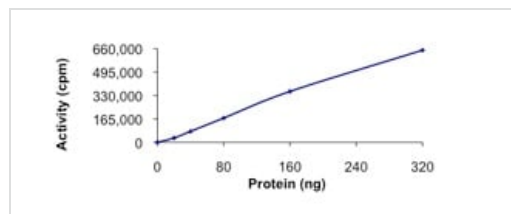
Sequence similarities Belongs to the protein kinase superfamily. AGC Ser/Thr protein kinase family.
Contains 1 AGC-kinase C-terminal domain.
Contains 1 protein kinase domain.

Images



SDS-PAGE analysis of ab261921.

SDS-PAGE - Recombinant human SGK2 protein (Active) (ab261921)



The specific activity of ab261921 was determined to be 74 nmol/min/mg as per activity assay protocol.

Biological activity - Recombinant human SGK2 protein (Active) (ab261921)

Please note: All products are "FOR RESEARCH USE ONLY. NOT FOR USE IN DIAGNOSTIC PROCEDURES"

Our Abpromise to you: Quality guaranteed and expert technical support

- Replacement or refund for products not performing as stated on the datasheet
- Valid for 12 months from date of delivery
- Response to your inquiry within 24 hours

- We provide support in Chinese, English, French, German, Japanese and Spanish
- Extensive multi-media technical resources to help you
- We investigate all quality concerns to ensure our products perform to the highest standards

If the product does not perform as described on this datasheet, we will offer a refund or replacement. For full details of the Abpromise, please visit <https://www.abcam.com/abpromise> or contact our technical team.

Terms and conditions

- Guarantee only valid for products bought direct from Abcam or one of our authorized distributors