

Product datasheet

Recombinant Human SI-CLP protein ab163948

1 Image

Description

Product name	Recombinant Human SI-CLP protein
Expression system	Wheat germ
Protein length	Full length protein
Animal free	No
Nature	Recombinant
Species	Human
Sequence	<p>MRTLFNLLWLALACSPVHTLSKSDAKKAASKTLLEKSQF SDKPVQDRGL VVTDLKAESVLEHRSYCSAKARDRHFAAGDVLGYVTPWN SHGYDVTKVFG SKFTQISPVWLQLKRRGREMFVETGLHDVDQGWMRAVR KHAKGLHVPRL LFEDWTYDDFRNVLDSEDEIEELSKTVVQVAKNQHFDFG VVEVWNQLLSQ KRVGLIHMLTHLAEALHQARLLALLVIPPATPGTDQLGMFT HKEFEQLA PVLDFGSLMTYDYSTAHPGNAPLSWVRACVQVLPK SKWRSKILLGLN FYGMDYATSKDAREPVVGARYIQLKDHPRPMVWDSQVS EHFFEYKKSRS GRHVVFYPTLKSQVRLELARELGVGVSIMELGQGLDYFY DLL</p>
Amino acids	1 to 393
Tags	GST tag N-Terminus

Specifications

Our [Abpromise guarantee](#) covers the use of **ab163948** in the following tested applications.
 The application notes include recommended starting dilutions; optimal dilutions/concentrations should be determined by the end user.

Applications	Western blot ELISA
Form	Liquid

Additional notes

This product was previously labelled as CHID1.

Preparation and Storage

Stability and Storage

Shipped on dry ice. Upon delivery aliquot and store at -80°C. Avoid freeze / thaw cycles.

pH: 8.00

Constituents: 0.31% Glutathione, 0.79% Tris HCl

General Info

Function

Saccharide- and LPS-binding protein with possible roles in pathogen sensing and endotoxin neutralization. Ligand-binding specificity relates to the length of the oligosaccharides, with preference for chitotetraose (in vitro).

Tissue specificity

Expressed in cells of monocytic, T, B and epithelial origin.

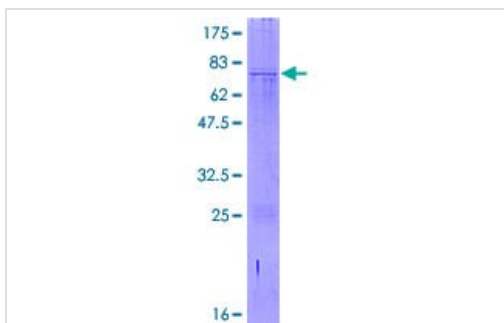
Sequence similarities

Belongs to the glycosyl hydrolase 18 family.

Cellular localization

Secreted. Lysosome.

Images



SDS-PAGE - Recombinant Human SI-CLP protein
(ab163948)

ab163948 on a 12.5% SDS-PAGE stained with Coomassie Blue.

Please note: All products are "FOR RESEARCH USE ONLY. NOT FOR USE IN DIAGNOSTIC PROCEDURES"

Our Abpromise to you: Quality guaranteed and expert technical support

- Replacement or refund for products not performing as stated on the datasheet
- Valid for 12 months from date of delivery
- Response to your inquiry within 24 hours

- We provide support in Chinese, English, French, German, Japanese and Spanish
- Extensive multi-media technical resources to help you
- We investigate all quality concerns to ensure our products perform to the highest standards

If the product does not perform as described on this datasheet, we will offer a refund or replacement. For full details of the Abpromise, please visit <https://www.abcam.com/abpromise> or contact our technical team.

Terms and conditions

- Guarantee only valid for products bought direct from Abcam or one of our authorized distributors