

Product datasheet

Recombinant human SIK3 protein ab136351

5 Images

Description

| | | |
|-----------------------------------|---|--|
| Product name | Recombinant human SIK3 protein | |
| Biological activity | The specific activity of ab136351 was determined to be 140 nmol/min/mg. | |
| Purity | > 90 % Densitometry. | |
| Expression system | Baculovirus infected Sf9 cells | |
| Accession | Q9Y2K2 | |
| Protein length | Protein fragment | |
| Animal free | No | |
| Nature | Recombinant | |
| Species | Human | |
| Sequence | MPARIGYYEIDRTIGKGNFAVVKRATHLVTKAKVAIKIIDKTQ LDEENLK KIFREVQIMKMLCHPHIIRLYQVMETERMYLVTEYASGGEIF DHLVAHG RMAEKEARRKFKQMTAVYFCHCRNIVHRDLKAENLLLLDA NLNIKIDFG FSNLFTPGQLLKTWCGSPPYAAPELFEGKEYDGPKVDIW SLGVVLYVLVC GALPFDGSTLQNLRARVLSGKFRIPFFMSTECEHLIRHMLV LDPNKRLSM EQICKHKWMKLGADPNFDRLIAECQQLKEERQVDPLNE DVLLAMEDMGL DKEQTLQ | |
| Predicted molecular weight | 62 kDa including tags | |
| Amino acids | 1 to 307 | |
| Tags | GST tag N-Terminus | |

Specifications

Our [Abpromise guarantee](#) covers the use of **ab136351** in the following tested applications.

The application notes include recommended starting dilutions; optimal dilutions/concentrations should be determined by the end user.

| | |
|---------------------|--------------------|
| Applications | Western blot |
| | Functional Studies |

SDS-PAGE

Form Liquid

Additional notes [ab204852](#) (AMARA substrate peptide for SIK + AMPK) can be utilized as a substrate for assessing kinase activity

Preparation and Storage

Stability and Storage Shipped on dry ice. Upon delivery aliquot and store at -80°C. Avoid freeze / thaw cycles.

pH: 7.50

Constituents: 0.31% Glutathione, 0.002% PMSF, 0.004% DTT, 0.79% Tris HCl, 0.003% EDTA, 25% Glycerol (glycerin, glycerine), 0.88% Sodium chloride

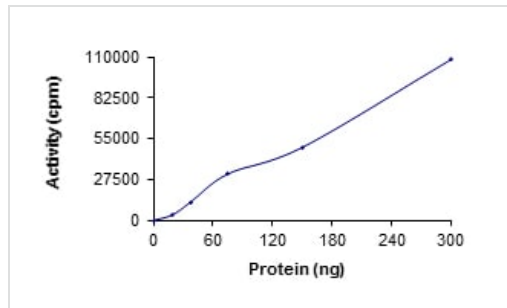
This product is an active protein and may elicit a biological response in vivo, handle with caution.

General Info

Relevance Activated by phosphorylation on Thr 163 by STK11 in complex with STE20 related adapter alpha (STRAD alpha) pseudo kinase and CAB39. Binds to and is activated by YWHAZ when phosphorylated on Thr 163.

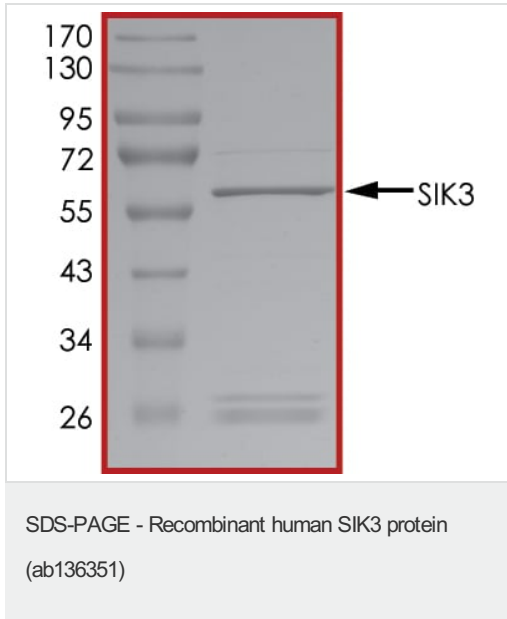
Cellular localization Cytoplasm

Images

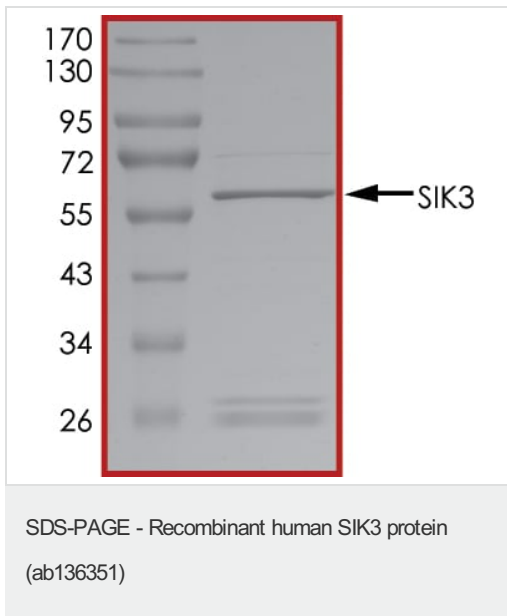


The specific activity of SIK3 (ab136351) was determined to be 128 nmol/min/mg as per activity assay protocol

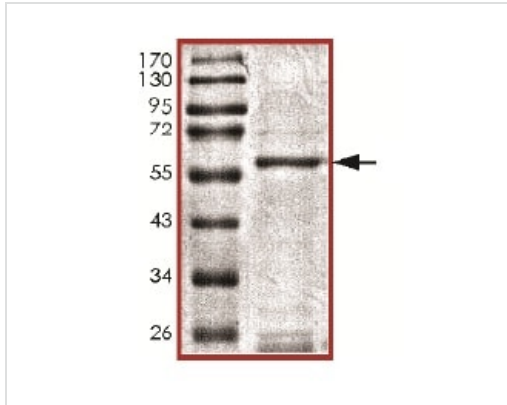
Functional Studies - Recombinant human SIK3 protein (ab136351)



SDS PAGE analysis of ab136351

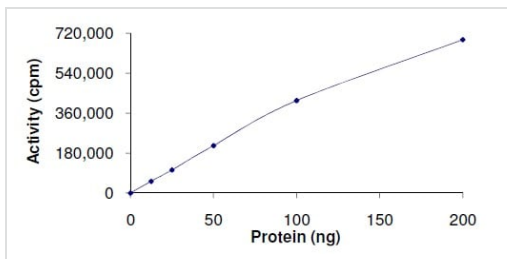


SDS PAGE analysis of ab136351



SDS-PAGE analysis of ab136351.

SDS-PAGE - Recombinant human SIK3 protein
(ab136351)



The specific activity of ab136351 was determined to be 140 nmol/min/mg.

Functional Studies - Recombinant human SIK3
protein (ab136351)

Please note: All products are "FOR RESEARCH USE ONLY. NOT FOR USE IN DIAGNOSTIC PROCEDURES"

Our Abpromise to you: Quality guaranteed and expert technical support

- Replacement or refund for products not performing as stated on the datasheet
- Valid for 12 months from date of delivery
- Response to your inquiry within 24 hours
- We provide support in Chinese, English, French, German, Japanese and Spanish
- Extensive multi-media technical resources to help you
- We investigate all quality concerns to ensure our products perform to the highest standards

If the product does not perform as described on this datasheet, we will offer a refund or replacement. For full details of the Abpromise, please visit <https://www.abcam.com/abpromise> or contact our technical team.

Terms and conditions

- Guarantee only valid for products bought direct from Abcam or one of our authorized distributors