

Product datasheet

Recombinant Human SIKE1 protein ab177720

1 Image

Description

<b>Product name</b>	Recombinant Human SIKE1 protein	
<b>Purity</b>	> 85 % SDS-PAGE. ab177720 was purified using conventional chromatography techniques.	
<b>Expression system</b>	Escherichia coli	
<b>Accession</b>	<a href="#">Q9BRV8</a>	
<b>Protein length</b>	Full length protein	
<b>Animal free</b>	No	
<b>Nature</b>	Recombinant	
<b>Species</b>	Human	
<b>Sequence</b>	MGSSHHHHHH SSGLVPRGSH MGSMSCSTIEK ILTDAKTLLE RLREHDAAAE SLVDQSAALH RRVAAMREAG TALPDQYQED ASDMKDMSKY KPHILLSQEN TQIRDLQQEN RELWISLEEH QDALELIMSK YRKQMLQLMV AKKAVDAEPV LKAHQSHSAE IESQIDRICE MGEVMRKAVQ VDDDQFCKIQ EKLAQLELEN KELRELLSIS SESLQARKEN SMDTASQAIK	
<b>Predicted molecular weight</b>	26 kDa including tags	
<b>Amino acids</b>	1 to 207	
<b>Tags</b>	His tag N-Terminus	
<b>Additional sequence information</b>	(NP_079349)	

Specifications

Our [Abpromise guarantee](#) covers the use of **ab177720** in the following tested applications.

The application notes include recommended starting dilutions; optimal dilutions/concentrations should be determined by the end user.

<b>Applications</b>	Mass Spectrometry SDS-PAGE
<b>Mass spectrometry</b>	MALDI-TOF
<b>Form</b>	Liquid

## Preparation and Storage

### Stability and Storage

Shipped at 4°C. Store at +4°C short term (1-2 weeks). Upon delivery aliquot. Store at -20°C or -80°C. Avoid freeze / thaw cycle.

pH: 8.00

Constituents: 0.32% Tris HCl, 0.88% Sodium chloride, 30% Glycerol (glycerin, glycerine), 0.02% DTT

## General Info

### Function

Physiological suppressor of IKK-epsilon and TBK1 that plays an inhibitory role in virus- and TLR3-triggered IRF3. Inhibits TLR3-mediated activation of interferon-stimulated response elements (ISRE) and the IFN-beta promoter. May act by disrupting the interactions of IKBKE or TBK1 with TICAM1/TRIF, IRF3 and DDX58/RIG-I. Does not inhibit NF-kappa-B activation pathways.

### Tissue specificity

Widely expressed. Expressed in brain, heart, skeletal muscle, colon, thymus, spleen, kidney, liver, small intestine, placenta, lung and leukocytes. Present in all cell lines tested (at protein level).

### Sequence similarities

Belongs to the SIKE family.

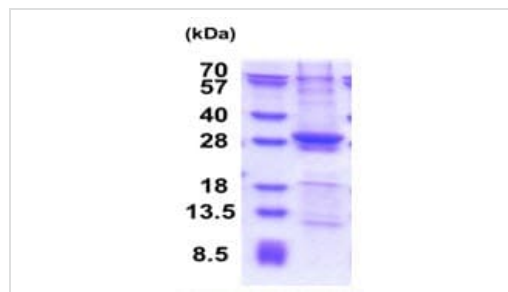
### Post-translational modifications

Phosphorylated upon DNA damage, probably by ATM or ATR.

### Cellular localization

Cytoplasm.

## Images



15% SDS PAGE analysis of ab177720 (3 µg).

SDS-PAGE - Recombinant Human SIKE1 protein  
(ab177720)

**Please note:** All products are "FOR RESEARCH USE ONLY. NOT FOR USE IN DIAGNOSTIC PROCEDURES"

## Our Abpromise to you: Quality guaranteed and expert technical support

- Replacement or refund for products not performing as stated on the datasheet
- Valid for 12 months from date of delivery
- Response to your inquiry within 24 hours
- We provide support in Chinese, English, French, German, Japanese and Spanish
- Extensive multi-media technical resources to help you

- We investigate all quality concerns to ensure our products perform to the highest standards

If the product does not perform as described on this datasheet, we will offer a refund or replacement. For full details of the Abpromise, please visit <https://www.abcam.com/abpromise> or contact our technical team.

### **Terms and conditions**

---

- Guarantee only valid for products bought direct from Abcam or one of our authorized distributors