

Product datasheet

Recombinant human SIRT3 protein ab125810

1 References 5 Images

Description

Product name	Recombinant human SIRT3 protein
Biological activity	The specific activity of ab125810 was determined to be 150 RLU/min/mg.
Purity	> 70 % Densitometry. Purity was determined to be >70% by densitometry.
Expression system	Baculovirus infected Sf9 cells
Accession	Q9NTG7
Protein length	Protein fragment
Animal free	No
Nature	Recombinant
Species	Human
Predicted molecular weight	66 kDa including tags
Amino acids	47 to 399

Specifications

Our [Abpromise guarantee](#) covers the use of **ab125810** in the following tested applications.

The application notes include recommended starting dilutions; optimal dilutions/concentrations should be determined by the end user.

Applications	Functional Studies SDS-PAGE
Form	Liquid

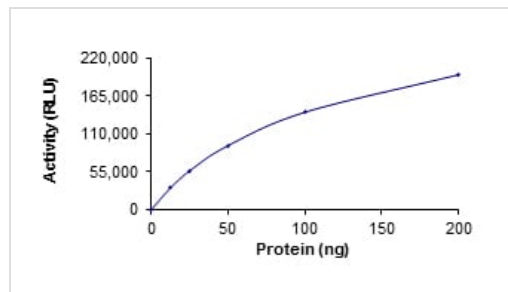
Preparation and Storage

Stability and Storage	Shipped on dry ice. Upon delivery aliquot and store at -80°C. Avoid freeze / thaw cycles. pH: 7.50 Constituents: 0.31% Glutathione, 0.002% PMSF, 0.004% DTT, 0.79% Tris HCl, 0.003% EDTA, 25% Glycerol (glycerin, glycerine), 0.88% Sodium chloride This product is an active protein and may elicit a biological response in vivo, handle with caution.
------------------------------	-------------------------------------------------------------------------------------------------------------------------------------------------------------------------------------------------------------------------------------------------------------------------------------------------------------------------------------------------------------------

General Info

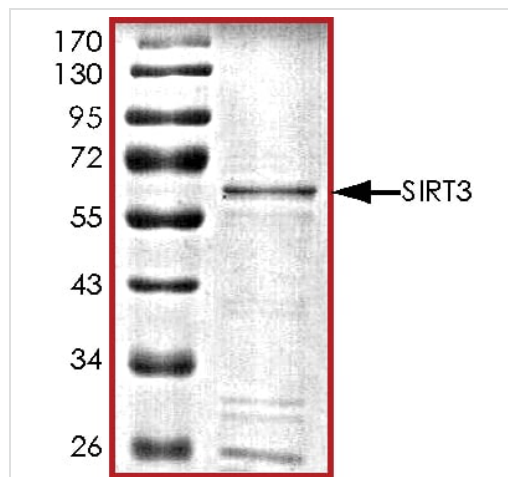
Function	NAD-dependent protein deacetylase. Activates or deactivates mitochondrial target proteins by deacetylating key lysine residues. Known targets include ACSS1, IDH, GDH, SOD2, PDHA1, LCAD, SDHA and the ATP synthase subunit ATP5O. Contributes to the regulation of the cellular energy metabolism. Important for regulating tissue-specific ATP levels.
Tissue specificity	Widely expressed.
Sequence similarities	Belongs to the sirtuin family. Class I subfamily. Contains 1 deacetylase sirtuin-type domain.
Post-translational modifications	Processed by mitochondrial processing peptidase (MPP) to give a 28 kDa product. Such processing is probably essential for its enzymatic activity.
Cellular localization	Mitochondrion matrix.

Images



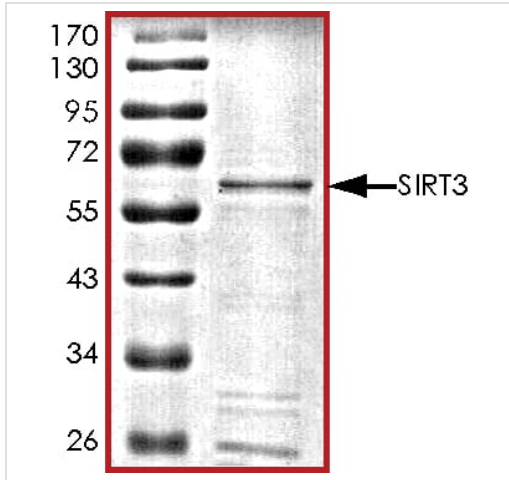
The specific activity of SIRT3 (ab125810) was determined to be 145 RLU/min/mg as per activity assay protocol

Functional Studies - Recombinant human SIRT3 protein (ab125810)



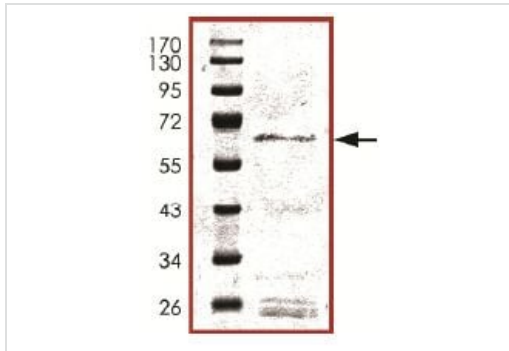
SDS PAGE analysis of ab125810

SDS-PAGE - Recombinant human SIRT3 protein (ab125810)



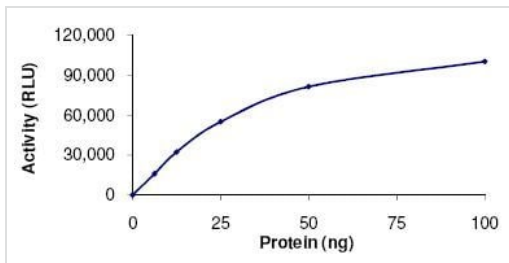
SDS PAGE analysis of ab125810

SDS-PAGE - Recombinant human SIRT3 protein (ab125810)



SDS-PAGE analysis of ab125810.

SDS-PAGE - Recombinant human SIRT3 protein (ab125810)



The specific activity of ab 125810 was determined to be 150 RLU/min/mg.

Functional Studies - Recombinant human SIRT3 protein (ab125810)

Please note: All products are "FOR RESEARCH USE ONLY. NOT FOR USE IN DIAGNOSTIC PROCEDURES"

Our Abpromise to you: Quality guaranteed and expert technical support

- Replacement or refund for products not performing as stated on the datasheet
- Valid for 12 months from date of delivery
- Response to your inquiry within 24 hours

- We provide support in Chinese, English, French, German, Japanese and Spanish
- Extensive multi-media technical resources to help you
- We investigate all quality concerns to ensure our products perform to the highest standards

If the product does not perform as described on this datasheet, we will offer a refund or replacement. For full details of the Abpromise, please visit <https://www.abcam.com/abpromise> or contact our technical team.

Terms and conditions

- Guarantee only valid for products bought direct from Abcam or one of our authorized distributors