

Product datasheet

Recombinant Human SIRT3 protein ab97951

1 Image

Description

Product name	Recombinant Human SIRT3 protein
Purity	> 95 % SDS-PAGE. ab97951 is purified using conventional chromatography techniques.
Expression system	Escherichia coli
Accession	Q9NTG7
Protein length	Protein fragment
Animal free	No
Nature	Recombinant
Species	Human
Sequence	MGSSHHHHHSSGLVPRGSHMSDKGKLSLQDVAELIRA RACQRVVVMVGA GISTPSGIPDFRSPGSLYSNLQQYDLPYPEAIFELPFFF HNPKPFFTLAKELYPGNYKPNVTHYFLRLLHDKGLLLRLYT QNIDGLERV SGIPASKLVEAHGTFASATCTVCQRPFPGEDIRADVMADR VPRCPVCTGV VKPDIVFFGEPLPQRFLHVVDFPMADLLLLIGTSLEVEPF ASLTEAVRS SVPRLINRDLVGPLAWHPRSRDVAQLGDVVHGVESLVE LLGWTEEMRDL VQRETGKLDGPK
Predicted molecular weight	34 kDa including tags
Amino acids	118 to 399
Tags	His tag N-Terminus

Specifications

Our [Abpromise guarantee](#) covers the use of **ab97951** in the following tested applications.

The application notes include recommended starting dilutions; optimal dilutions/concentrations should be determined by the end user.

Applications	SDS-PAGE Mass Spectrometry
Mass spectrometry	MALDI-TOF-TOF

Form Liquid

Preparation and Storage

Stability and Storage Shipped at 4°C. Upon delivery aliquot and store at -20°C or -80°C. Avoid repeated freeze / thaw cycles.

pH: 8.00

Constituents: 0.0154% DTT, 0.316% Tris HCl, 10% Glycerol (glycerin, glycerine), 0.58% Sodium chloride

General Info

Function NAD-dependent protein deacetylase. Activates or deactivates mitochondrial target proteins by deacetylating key lysine residues. Known targets include ACSS1, IDH, GDH, SOD2, PDHA1, LCAD, SDHA and the ATP synthase subunit ATP5O. Contributes to the regulation of the cellular energy metabolism. Important for regulating tissue-specific ATP levels.

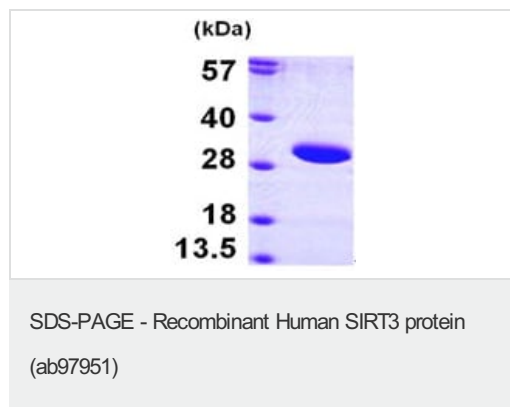
Tissue specificity Widely expressed.

Sequence similarities Belongs to the sirtuin family. Class I subfamily.
Contains 1 deacetylase sirtuin-type domain.

Post-translational modifications Processed by mitochondrial processing peptidase (MPP) to give a 28 kDa product. Such processing is probably essential for its enzymatic activity.

Cellular localization Mitochondrion matrix.

Images



15% SDS-PAGE showing ab97951 at approximately 33.5kDa (3µg).

Please note: All products are "FOR RESEARCH USE ONLY. NOT FOR USE IN DIAGNOSTIC PROCEDURES"

Our Abpromise to you: Quality guaranteed and expert technical support

- Replacement or refund for products not performing as stated on the datasheet
- Valid for 12 months from date of delivery
- Response to your inquiry within 24 hours

- We provide support in Chinese, English, French, German, Japanese and Spanish
- Extensive multi-media technical resources to help you
- We investigate all quality concerns to ensure our products perform to the highest standards

If the product does not perform as described on this datasheet, we will offer a refund or replacement. For full details of the Abpromise, please visit <https://www.abcam.com/abpromise> or contact our technical team.

Terms and conditions

- Guarantee only valid for products bought direct from Abcam or one of our authorized distributors