

Product datasheet

Recombinant Human SLC25A11 protein ab152862

1 Image

Description

Product name	Recombinant Human SLC25A11 protein
Expression system	Wheat germ
Accession	Q02978
Protein length	Full length protein
Animal free	No
Nature	Recombinant
Species	Human
Sequence	<p>MAATASAGAGGIDGKPRTPSPKSVKFLFGGLAGMGATV FVQPLDLVKNRMQ LSGEGAKTREYKTSFHALTSILKAEGLRGIYGLSAGLLRQ ATYTTTRLG IYTVL FERLTGADGTPPGFLLKAVIGMTAGATGAFVGP AEVALIRMTAD GRLPADQRRGYKNVFNALIRITREEGVLTWRGCIPTM ARAVVVNAAQLA SYSQSKQFLLDSGYFSDNILCHFCASMISGLVTTAAS MPVDIAKTRIQNM RMIDGKPEYKNGLDVLFKVVRYEGFFSLWKGFTPYAR LRGPHTVLTFIFL EQMNKAYKRLFLSG</p>
Predicted molecular weight	60 kDa including tags
Amino acids	1 to 314

Specifications

Our [Abpromise guarantee](#) covers the use of **ab152862** in the following tested applications.

The application notes include recommended starting dilutions; optimal dilutions/concentrations should be determined by the end user.

Applications	<ul style="list-style-type: none"> ELISA Western blot SDS-PAGE
Form	Liquid

Additional notes

Preparation and Storage

Stability and Storage

Shipped on dry ice. Upon delivery aliquot and store at -80°C. Avoid freeze / thaw cycles.

pH: 8.00

Constituents: 0.31% Glutathione, 0.79% Tris HCl

General Info

Function

Catalyzes the transport of 2-oxoglutarate across the inner mitochondrial membrane in an electroneutral exchange for malate or other dicarboxylic acids, and plays an important role in several metabolic processes, including the malate-aspartate shuttle, the oxoglutarate/isocitrate shuttle, in gluconeogenesis from lactate, and in nitrogen metabolism.

Sequence similarities

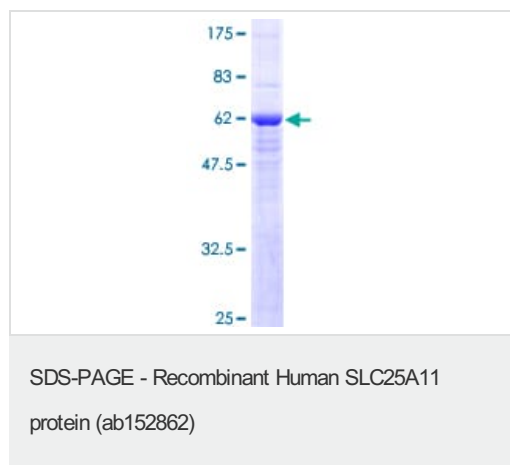
Belongs to the mitochondrial carrier family.

Contains 3 Solcar repeats.

Cellular localization

Mitochondrion inner membrane.

Images



12.5% SDS-PAGE analysis of ab152862 stained with Coomassie Blue.

Please note: All products are "FOR RESEARCH USE ONLY. NOT FOR USE IN DIAGNOSTIC PROCEDURES"

Our Abpromise to you: Quality guaranteed and expert technical support

- Replacement or refund for products not performing as stated on the datasheet
- Valid for 12 months from date of delivery
- Response to your inquiry within 24 hours
- We provide support in Chinese, English, French, German, Japanese and Spanish
- Extensive multi-media technical resources to help you
- We investigate all quality concerns to ensure our products perform to the highest standards

If the product does not perform as described on this datasheet, we will offer a refund or replacement. For full details of the Abpromise, please visit <https://www.abcam.com/abpromise> or contact our technical team.

Terms and conditions

- Guarantee only valid for products bought direct from Abcam or one of our authorized distributors