

Product datasheet

Recombinant Human SLC26A6/Pat1 protein ab163916

1 Image

Description

Product name	Recombinant Human SLC26A6/Pat1 protein
Expression system	Wheat germ
Protein length	Full length protein
Animal free	No
Nature	Recombinant
Species	Human
Sequence	<p>MGLADASGPRDTQALLSATQAMDLRRRDYHMERPLL NQEHLLEELGRWGSA PRTHQWRTWLQCSRARAYALLLQHLPVLVWLPRYPV RDWLLGDLLSGLSV AIMQLPQGLAYALLAGLPPVFGLYSSFYFVFYFLFGTS RHISVGTFAVM SVMVGSVTESLAPQALNDSMINETARDAARVQVASTL SVLVGLFQVGLGL IHFGFVVTYLSEPLVRGYTTAAAVQVFVSQKLYVFGHLH SSHSGPLSLIY TVLEVCWKLPQSKVGTVVTAAGVVLVVVKLLNDKL QQQLPMPPIGELL TLIGATGISYGMGLKHRFEVDVVGNIAGLVPPVAPNTQ LFSKLVGSAFT IAVVGFAIAISLGKIFALRHGYRVDNQLVALGLSNLIG GIFQCFPVSC SMSRSLVQESTGGNSQVAGAISSLFILLIIVKLGELFHDL PKAVLAAIII VNLKGMRLRQLSDMRSLWKANRADLLIWLVTFTATILLN LDLGLVVAVIFS LLLVVVRTQMPHYSVLGQVPDIDIYRDVAEYSEAKEVR GVKVFRSSATVY FANAEFYSDALKQRCGVDFLISQKKKLLKKQEQLK LKQLQKEEKLKQ AASPKGASVSINVNTSLEDMRSNNVEDCKMMVSSGD KMEDATANGQEDSK APDGSTLKALGLPQPDFHSLILDLGALSFDVTVCLKSL KNIFHDFREIEV EVYMAACHSPVVSQLEAGHFFDASITKKHLFASVHDA</p>

Amino acids	1 to 758
Tags	GST tag N-Terminus

Specifications

Our [Abpromise guarantee](#) covers the use of **ab163916** in the following tested applications.

The application notes include recommended starting dilutions; optimal dilutions/concentrations should be determined by the end user.

Applications	ELISA Western blot
Form	Liquid
Additional notes	This product was previously labelled as SLC26A6.

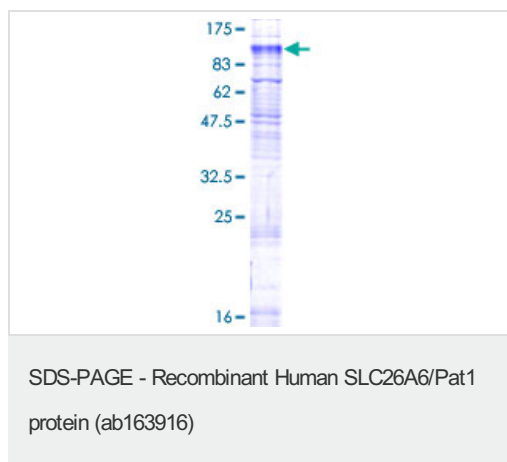
Preparation and Storage

Stability and Storage	Shipped on dry ice. Upon delivery aliquot and store at -80°C. Avoid freeze / thaw cycles. pH: 8.00 Constituents: 0.31% Glutathione, 0.79% Tris HCl
------------------------------	--

General Info

Function	Does not seem to be involved in anion transport.
Tissue specificity	Ubiquitous. Highest levels in kidney and pancreas. Lower expression in heart, skeletal muscle, liver and placenta. Also found in lung and brain.
Sequence similarities	Belongs to the SLC26A/SulP transporter (TC 2.A.53) family. Contains 1 STAS domain.
Cellular localization	Membrane.

Images



ab163916 on a 12.5% SDS-PAGE stained with Coomassie Blue.

Please note: All products are "FOR RESEARCH USE ONLY. NOT FOR USE IN DIAGNOSTIC PROCEDURES"

Our Abpromise to you: Quality guaranteed and expert technical support

- Replacement or refund for products not performing as stated on the datasheet
- Valid for 12 months from date of delivery
- Response to your inquiry within 24 hours

- We provide support in Chinese, English, French, German, Japanese and Spanish
- Extensive multi-media technical resources to help you
- We investigate all quality concerns to ensure our products perform to the highest standards

If the product does not perform as described on this datasheet, we will offer a refund or replacement. For full details of the Abpromise, please visit <https://www.abcam.com/abpromise> or contact our technical team.

Terms and conditions

- Guarantee only valid for products bought direct from Abcam or one of our authorized distributors