

Product datasheet

Recombinant Human SLC27A4 / FATP4 protein  
ab132824

1 Image

Description

|  |  |  |
|--|--|--|
| <b>Product name</b>                    | Recombinant Human SLC27A4 / FATP4 protein  |  |
| <b>Expression system</b>               | Wheat germ   |  |
| <b>Accession</b>                       | <a href="#">Q6P1M0-2</a>   |  |
| <b>Protein length</b>                  | Full length protein  |  |
| <b>Animal free</b>                     | No   |  |
| <b>Nature</b>                          | Recombinant  |  |
| <b>Species</b>                         | Human  |  |
| <b>Sequence</b>                        | MPLTLSTLLQPGRWGTGRRAAEPTPGHNAAWSLSGGGAA<br>VLQAGAETALD<br>PGGILPVVPLLGWRLALHPGLHQDHQAYLTGDVLMDEL<br>GYLFRDRTG<br>DTFRWKGENVSTTEVEGTLSRLLDMADVAVYGVEVPGTE<br>GRAGMAAVASP<br>TGNCDLERFAQVLEKELPLYARPIFLRLLPELHKTGTYKFQ<br>KTELKKEGF<br>DPAIVKDPLFYLDAQKGRYVPLDQEAYSRIQAGEEKL |  |
| <b>Predicted molecular weight</b>      | 52 kDa including tags  |  |
| <b>Amino acids</b>                     | 1 to 237   |  |
| <b>Additional sequence information</b> | This is the full length protein sequence for isoform 2 UniProt: Q6P1M0-2 (AAH09959.1).   |  |

Specifications

Our [Abpromise guarantee](#) covers the use of **ab132824** in the following tested applications.

The application notes include recommended starting dilutions; optimal dilutions/concentrations should be determined by the end user.

|                     |              |
|---------------------|--------------|
| <b>Applications</b> | ELISA        |
|                     | SDS-PAGE     |
|                     | Western blot |
| <b>Form</b>         | Liquid       |

Additional notes

## Preparation and Storage

---

### Stability and Storage

Shipped on dry ice. Upon delivery aliquot and store at -80°C. Avoid freeze / thaw cycles.

pH: 8.00

Constituents: 0.31% Glutathione, 0.79% Tris HCl

## General Info

---

### Relevance

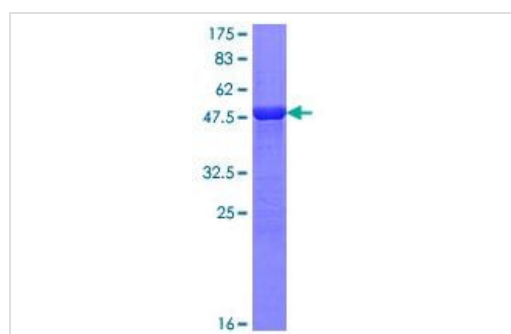
SLC27A4 / FATP4 plays a role in the transport of long chain fatty acids across the plasma membrane. It has acyl-coA ligase activity for long chain and very long chain fatty acids. Deletion of the SLC27A4 gene results in embryonic lethality, which is attributed to the need for fat absorption across the visceral endoderm early in embryonic development. Expression of FAT4P in the intestinal lining is thought to be altered in response to dietary fat.

### Cellular localization

Cell Membrane

## Images

---



12.5% SDS-PAGE analysis of ab132824 stained with Coomassie Blue.

SDS-PAGE - Recombinant Human SLC27A4 /  
FATP4 protein (ab132824)

**Please note:** All products are "FOR RESEARCH USE ONLY. NOT FOR USE IN DIAGNOSTIC PROCEDURES"

## Our Abpromise to you: Quality guaranteed and expert technical support

---

- Replacement or refund for products not performing as stated on the datasheet
- Valid for 12 months from date of delivery
- Response to your inquiry within 24 hours
  
- We provide support in Chinese, English, French, German, Japanese and Spanish
- Extensive multi-media technical resources to help you
- We investigate all quality concerns to ensure our products perform to the highest standards

If the product does not perform as described on this datasheet, we will offer a refund or replacement. For full details of the Abpromise, please visit <https://www.abcam.com/abpromise> or contact our technical team.

## Terms and conditions

---

- Guarantee only valid for products bought direct from Abcam or one of our authorized distributors