

Product datasheet

Recombinant Human SLC35D2/HFRC protein ab161267

1 Image

Overview

<b>Product name</b>	Recombinant Human SLC35D2/HFRC protein
<b>Protein length</b>	Protein fragment

Description

<b>Nature</b>	Recombinant
<b>Source</b>	Wheat germ
<b>Amino Acid Sequence</b>	
<b>Species</b>	Human
<b>Sequence</b>	VSKLNKIIHFDPDFDKKIPVKLFPLPLLYVGNHISGLSSTS KLSLPMFTVL RKFTIPLT
<b>Amino acids</b>	74 to 131
<b>Tags</b>	GST tag N-Terminus

Specifications

Our [Abpromise guarantee](#) covers the use of **ab161267** in the following tested applications. The application notes include recommended starting dilutions; optimal dilutions/concentrations should be determined by the end user.

<b>Applications</b>	ELISA Western blot
<b>Form</b>	Liquid
<b>Additional notes</b>	Protein concentration is above or equal to 0.05 mg/ml. This product was previously labelled as SLC35D2

Preparation and Storage

<b>Stability and Storage</b>	Shipped on dry ice. Upon delivery aliquot and store at -80°C. Avoid freeze / thaw cycles. pH: 8.00 Constituents: 0.31% Glutathione, 0.79% Tris HCl
------------------------------	--

## General Info

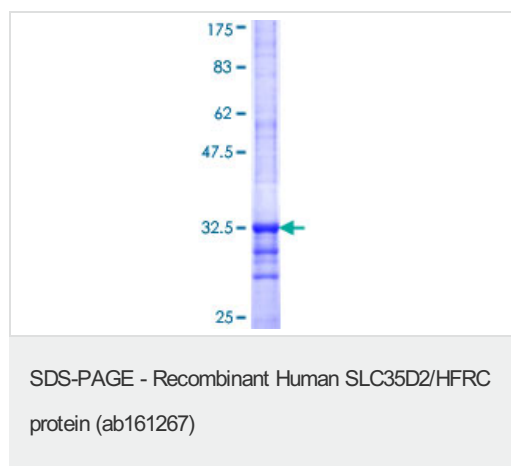
---

<b>Function</b>	Antiporter transporting nucleotide sugars such as UDP-N-acetylglucosamine (UDP-GlcNAc), UDP-glucose (UDP-Glc) and GDP-mannose (GDP-Man) pooled in the cytosol into the lumen of the Golgi in exchange for the corresponding nucleosides monophosphates (UMP for UDP-sugars and GMP for GDP-sugars). May take part in heparan sulfate synthesis by supplying UDP-GlcNAc, the donor substrate, and thus be involved in growth factor signaling.
<b>Tissue specificity</b>	Highly expressed in heart, kidney, small intestine, placenta, lung and peripheral blood leukocyte. Weakly expressed in skeletal muscle and spleen. Not expressed in brain, colon and thymus.
<b>Sequence similarities</b>	Belongs to the TPT transporter family. SLC35D subfamily.
<b>Cellular localization</b>	Golgi apparatus membrane.

---

## Images

---



ab161267 on a 12.5% SDS-PAGE stained with Coomassie Blue.

**Please note:** All products are "FOR RESEARCH USE ONLY AND ARE NOT INTENDED FOR DIAGNOSTIC OR THERAPEUTIC USE"

## Our Abpromise to you: Quality guaranteed and expert technical support

---

- Replacement or refund for products not performing as stated on the datasheet
- Valid for 12 months from date of delivery
- Response to your inquiry within 24 hours
  
- We provide support in Chinese, English, French, German, Japanese and Spanish
- Extensive multi-media technical resources to help you
- We investigate all quality concerns to ensure our products perform to the highest standards

If the product does not perform as described on this datasheet, we will offer a refund or replacement. For full details of the Abpromise, please visit <https://www.abcam.com/abpromise> or contact our technical team.

## Terms and conditions

---

- Guarantee only valid for products bought direct from Abcam or one of our authorized distributors