

Product datasheet

Recombinant Human Smad1 protein ab84653

2 Images

Description

| | |
|--------------------------|---------------------------------|
| Product name | Recombinant Human Smad1 protein |
| Expression system | Escherichia coli |
| Protein length | Full length protein |
| Animal free | No |
| Nature | Recombinant |
| Species | Human |

Specifications

Our [Abpromise guarantee](#) covers the use of **ab84653** in the following tested applications.

The application notes include recommended starting dilutions; optimal dilutions/concentrations should be determined by the end user.

| | |
|---------------------|--------------------------|
| Applications | Western blot SDS-PAGE |
| Form | Liquid |

Preparation and Storage

| | |
|------------------------------|---|
| Stability and Storage | Shipped on dry ice. Upon delivery aliquot and store at -80°C. Avoid freeze / thaw cycles. pH: 7.50 Constituents: 0.00174% PMSF, 0.00385% DTT, 0.79% Tris HCl, 25% Glycerol, 0.87% Sodium chloride |
|------------------------------|---|

General Info

| | |
|------------------------------|--|
| Function | Transcriptional modulator activated by BMP (bone morphogenetic proteins) type 1 receptor kinase. SMAD1 is a receptor-regulated SMAD (R-SMAD). SMAD1/OAZ1/PSMB4 complex mediates the degradation of the CREBBP/EP300 repressor SNIP1. |
| Tissue specificity | Ubiquitous. Highest expression seen in the heart and skeletal muscle. |
| Sequence similarities | Belongs to the dwarfin/SMAD family. Contains 1 MH1 (MAD homology 1) domain. Contains 1 MH2 (MAD homology 2) domain. |

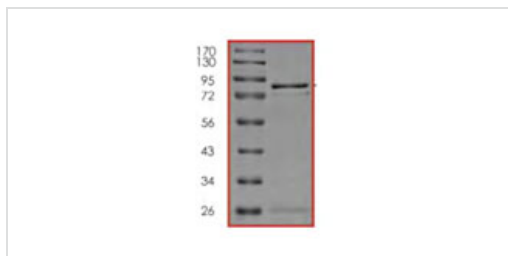
Post-translational modifications

Phosphorylated on serine by BMP type 1 receptor kinase.
Ubiquitin-mediated proteolysis by SMAD-specific E3 ubiquitin ligase SMURF1.

Cellular localization

Cytoplasm. Nucleus. Cytoplasmic in the absence of ligand. Migrates to the nucleus when complexed with SMAD4. Co-localizes with LEMD3 at the nucleus inner membrane.

Images



SDS-PAGE showing ab84653 at approximately 83kDa.

SDS-PAGE - Recombinant Human Smad1 protein (ab84653)



Ab46688 recognizes the tagged recombinant Smad1 protein (ab84653) which has an expected molecular weight of 83 kDa.

Western blot - Recombinant Human Smad1 protein (ab84653)

Please note: All products are "FOR RESEARCH USE ONLY. NOT FOR USE IN DIAGNOSTIC PROCEDURES"

Our Abpromise to you: Quality guaranteed and expert technical support

- Replacement or refund for products not performing as stated on the datasheet
- Valid for 12 months from date of delivery
- Response to your inquiry within 24 hours
- We provide support in Chinese, English, French, German, Japanese and Spanish
- Extensive multi-media technical resources to help you
- We investigate all quality concerns to ensure our products perform to the highest standards

If the product does not perform as described on this datasheet, we will offer a refund or replacement. For full details of the Abpromise, please visit <https://www.abcam.com/abpromise> or contact our technical team.

Terms and conditions

- Guarantee only valid for products bought direct from Abcam or one of our authorized distributors