

Product datasheet

Recombinant Human SMAP2 protein ab163863

1 Image

Description

|                          |  |  |
|--------------------------|--|--|
| <b>Product name</b>      | Recombinant Human SMAP2 protein  |  |
| <b>Expression system</b> | Wheat germ   |  |
| <b>Protein length</b>    | Full length protein  |  |
| <b>Animal free</b>       | No   |  |
| <b>Nature</b>            | Recombinant  |  |
| <b>Species</b>           | Human  |  |
| <b>Sequence</b>          | MTGKSVKDVDRYQAVLANLLLEEDNKFCADCQSKGP<br>RWASWNIGVFICIR<br>CAGIHRNLGVHISRKSVNLDQWTQEIQCMQEMGNG<br>KANRLYEAYLPET<br>FRRPQIDPAVEGFIRDKYEKKKYMDRSLDINAFRKEKD<br>DKWKRGESEPVPE<br>KKLEPVVFEKVKMPQKKEDPQLPRKSSPKSTAPVMD<br>LLGLDAPVACSIAN<br>SKTSNTLEKDLLASVPSPPSSSGSRKVVGSMPTAGS<br>AGSVPENLNFPE<br>PGSKSEEIGKKQLSKDSILSLYGSQTPQMPTQAMFMA<br>PAQMAYPTAYPSF<br>PGVTPPNSIMGSMMPPPVMVAQPAGSGMVAPMAM<br>PAGYMGGMQASMMGV<br>PNGMMTTQQAGYMAGMAAMPQTVYGVQPAQQLQWN<br>LTQMTQQMAGMNFYG<br>ANGMMNYGQSMGGNGQAANQTLSPQMWK |  |
| <b>Amino acids</b>       | 1 to 429   |  |
| <b>Tags</b>              | GST tag N-Terminus   |  |

Specifications

Our [Abpromise guarantee](#) covers the use of **ab163863** in the following tested applications.

The application notes include recommended starting dilutions; optimal dilutions/concentrations should be determined by the end user.

|                     |              |
|---------------------|--------------|
| <b>Applications</b> | ELISA        |
|                     | Western blot |

|                         |  |
|-------------------------|--|
| <b>Form</b>             | Liquid   |
| <b>Additional notes</b> | Protein concentration is above or equal to 0.05 mg/ml. |

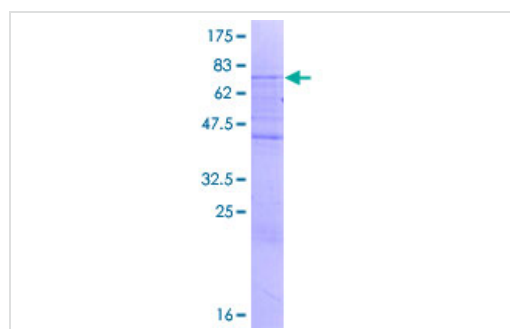
## Preparation and Storage

|                              |  |
|------------------------------|--|
| <b>Stability and Storage</b> | Shipped on dry ice. Upon delivery aliquot and store at -80°C. Avoid freeze / thaw cycles.<br>pH: 8.00<br>Constituents: 0.31% Glutathione, 0.79% Tris HCl |
|------------------------------|--|

## General Info

|                              |   |
|------------------------------|---|
| <b>Function</b>              | GTPase activating protein that acts on ARF1. Can also activate ARF6 (in vitro). May play a role in clathrin-dependent retrograde transport from early endosomes to the trans-Golgi network. |
| <b>Sequence similarities</b> | Contains 1 Arf-GAP domain.  |
| <b>Cellular localization</b> | Cytoplasm. Detected in multiple foci throughout the cytoplasm and in juxtanuclear structures.   |

## Images



ab163863 on a 12.5% SDS-PAGE stained with Coomassie Blue.

SDS-PAGE - Recombinant Human SMAP2 protein  
(ab163863)

**Please note:** All products are "FOR RESEARCH USE ONLY. NOT FOR USE IN DIAGNOSTIC PROCEDURES"

## Our Abpromise to you: Quality guaranteed and expert technical support

- Replacement or refund for products not performing as stated on the datasheet
- Valid for 12 months from date of delivery
- Response to your inquiry within 24 hours
- We provide support in Chinese, English, French, German, Japanese and Spanish
- Extensive multi-media technical resources to help you
- We investigate all quality concerns to ensure our products perform to the highest standards

If the product does not perform as described on this datasheet, we will offer a refund or replacement. For full details of the Abpromise, please visit <https://www.abcam.com/abpromise> or contact our technical team.

## Terms and conditions

---

- Guarantee only valid for products bought direct from Abcam or one of our authorized distributors