

Product datasheet

Recombinant Human SOSTDC1 protein (denatured)  
 ab139616

1 Image

Description

<b>Product name</b>	Recombinant Human SOSTDC1 protein (denatured)
<b>Purity</b>	> 85 % SDS-PAGE.
<b>Expression system</b>	Escherichia coli
<b>Accession</b>	<a href="#">Q6X4U4</a>
<b>Protein length</b>	Full length protein
<b>Animal free</b>	No
<b>Nature</b>	Recombinant
<b>Species</b>	Human
<b>Sequence</b>	<pre> MGSSHHHHHH SSGLVPRGSH MGSFKNDATE ILYSHVVKPV PAHPSSNSTL NQARNGGRHF SNTGLDRNTR VQVGCRELRS TKYISDGQCT SISPLKELVC AGECLPLPVL PNWIGGGYGT KYWSRRSSQE WRCVNDKTRT QRIQLQCQDG STRTYKITVV TACKCKRYTR QHNESSHNFE SMSPAKPVQH HRERKRASKS SKHSMS           </pre>
<b>Predicted molecular weight</b>	23 kDa including tags
<b>Amino acids</b>	24 to 206
<b>Tags</b>	His tag N-Terminus
<b>Description</b>	Recombinant Human SOSTDC1 protein

Specifications

Our [Abpromise guarantee](#) covers the use of **ab139616** in the following tested applications.

The application notes include recommended starting dilutions; optimal dilutions/concentrations should be determined by the end user.

<b>Applications</b>	SDS-PAGE
<b>Form</b>	Liquid

Preparation and Storage

## Stability and Storage

Shipped at 4°C. Upon delivery aliquot and store at -20°C or -80°C. Avoid repeated freeze / thaw cycles.

pH: 8.00

Constituents: 2.4% Urea, 0.32% Tris HCl, 10% Glycerol

## General Info

---

### Function

May be involved in the onset of endometrial receptivity for implantation/sensitization for the decidual cell reaction Enhances Wnt signaling and inhibits TGF-beta signaling (By similarity). Directly antagonizes activity of BMP2, BMP4, BMP6 and BMP7 in a dose-dependent manner.

### Tissue specificity

Highly expressed in kidney and weakly in lung.

### Sequence similarities

Belongs to the sclerostin family.  
Contains 1 CTCK (C-terminal cystine knot-like) domain.

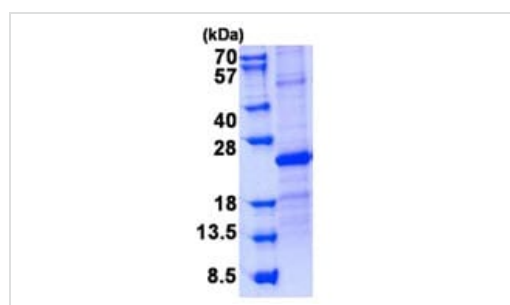
### Cellular localization

Secreted.

---

## Images

---



15% SDS-PAGE analysis of ab139616 (3µg).

SDS-PAGE - Recombinant Human SOSTDC1  
protein (denatured) (ab139616)

**Please note:** All products are "FOR RESEARCH USE ONLY. NOT FOR USE IN DIAGNOSTIC PROCEDURES"

## Our Abpromise to you: Quality guaranteed and expert technical support

---

- Replacement or refund for products not performing as stated on the datasheet
- Valid for 12 months from date of delivery
- Response to your inquiry within 24 hours
- We provide support in Chinese, English, French, German, Japanese and Spanish
- Extensive multi-media technical resources to help you
- We investigate all quality concerns to ensure our products perform to the highest standards

If the product does not perform as described on this datasheet, we will offer a refund or replacement. For full details of the Abpromise, please visit <https://www.abcam.com/abpromise> or contact our technical team.

## Terms and conditions

---

- Guarantee only valid for products bought direct from Abcam or one of our authorized distributors