

Product datasheet

Recombinant human SPARC protein (Active) ab243161

1 Image

Description

<b>Product name</b>	Recombinant human SPARC protein (Active)	
<b>Biological activity</b>	Fully biologically active when compared to standard. The ED <sub>50</sub> as determined by its ability to inhibit the cell growth of Mv1Lu mink lung epithelial cells is less than 3.0 ug/mL, corresponding to a specific activity of >333 IU/mg.	
<b>Purity</b>	> 98 % SDS-PAGE. > 98 % by HPLC.	
<b>Endotoxin level</b>	< 1.000 Eu/μg	
<b>Expression system</b>	Escherichia coli	
<b>Accession</b>	<a href="#">P09486</a>	
<b>Protein length</b>	Protein fragment	
<b>Animal free</b>	No	
<b>Nature</b>	Recombinant	
<b>Species</b>	Human	
<b>Sequence</b>	APQQEALPDETEVVEETVAEVTEVSVGANPVQVEVGEF DDGAEETEEVV AENPCQNHCKHGKVCELDENNTPMCVCQDPTSCPAPI GEFKVCSDNK TFDSSCHFFATKCTLEGTKKGHKLHLDYIGPCKYIPCLDS ELTEFPLRM RDWLKNVLVTLYERDEDNLLTEKQKLRVKKIHENEKRL AGDHPVELLA RDFEKNYNMYFPVHWQFGQLDQHPIDGYLSHTELAPLRA PLIPMEHCTT RFFETCDLDNDKYALDEWAGCFGIKQKDI	
<b>Predicted molecular weight</b>	33 kDa	
<b>Amino acids</b>	18 to 297	

Specifications

Our [Abpromise guarantee](#) covers the use of **ab243161** in the following tested applications.

The application notes include recommended starting dilutions; optimal dilutions/concentrations should be determined by the end user.

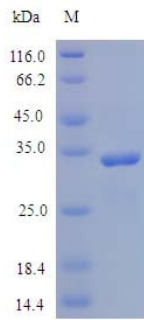
**Applications** Functional Studies

	SDS-PAGE
	HPLC
<b>Form</b>	Lyophilized
<b>Preparation and Storage</b>	
<hr/>	
<b>Stability and Storage</b>	Shipped at 4°C. Store at -20°C or -80°C. Avoid freeze / thaw cycle. Constituent: PBS  0.2 µm filtered.  This product is an active protein and may elicit a biological response in vivo, handle with caution.
<b>Reconstitution</b>	We recommend that this vial be briefly centrifuged prior to opening to bring the contents to the bottom. Reconstitute in sterile distilled water or aqueous buffer containing 0.1 % BSA to a concentration of 0.1-1.0 mg/mL. Stock solutions should be apportioned into working aliquots and stored at = -20 °C. Further dilutions should be made in appropriate buffered solutions.
<b>General Info</b>	
<hr/>	
<b>Function</b>	Appears to regulate cell growth through interactions with the extracellular matrix and cytokines. Binds calcium and copper, several types of collagen, albumin, thrombospondin, PDGF and cell membranes. There are two calcium binding sites; an acidic domain that binds 5 to 8 Ca(2+) with a low affinity and an EF-hand loop that binds a Ca(2+) ion with a high affinity.
<b>Sequence similarities</b>	Belongs to the SPARC family. Contains 1 EF-hand domain. Contains 1 follistatin-like domain. Contains 1 Kazal-like domain.
<b>Developmental stage</b>	Expressed at high levels in tissues undergoing morphogenesis, remodeling and wound repair.
<b>Cellular localization</b>	Secreted > extracellular space > extracellular matrix > basement membrane. In or around the basement membrane.

**Images**

---

## SDS-PAGE analysis of ab243161



SDS-PAGE - Recombinant human SPARC protein  
(Active) (ab243161)

**Please note:** All products are "FOR RESEARCH USE ONLY. NOT FOR USE IN DIAGNOSTIC PROCEDURES"

### Our Abpromise to you: Quality guaranteed and expert technical support

---

- Replacement or refund for products not performing as stated on the datasheet
- Valid for 12 months from date of delivery
- Response to your inquiry within 24 hours
- We provide support in Chinese, English, French, German, Japanese and Spanish
- Extensive multi-media technical resources to help you
- We investigate all quality concerns to ensure our products perform to the highest standards

If the product does not perform as described on this datasheet, we will offer a refund or replacement. For full details of the Abpromise, please visit <https://www.abcam.com/abpromise> or contact our technical team.

### Terms and conditions

---

- Guarantee only valid for products bought direct from Abcam or one of our authorized distributors