

## Product datasheet

# Recombinant Human SPC18 protein ab161662

1 Image

### Overview

<b>Product name</b>	Recombinant Human SPC18 protein
<b>Protein length</b>	Full length protein

### Description

<b>Nature</b>	Recombinant
<b>Source</b>	Wheat germ
<b>Amino Acid Sequence</b>	
<b>Species</b>	Human
<b>Sequence</b>	<p>                     MLSLDFLDDVRRMNKRQLYYQVLNFGMIVSSALMIWK                      GLMVTGSESPV                      VVLSGSMEPAFHRGDLLFLTNRVEDPIRVGEMVFRIG                      REIPVHRVLK                      IHEKQNGHIKFLTKGDNNAVDDRGLYKQGQHWLEKKD                      VVGRARGFVPYIG                      VTILMNDYPKFKYAVLFLGLFVLVHRE                 </p>
<b>Amino acids</b>	1 to 179
<b>Tags</b>	GST tag N-Terminus

### Specifications

Our [Abpromise guarantee](#) covers the use of **ab161662** in the following tested applications.

The application notes include recommended starting dilutions; optimal dilutions/concentrations should be determined by the end user.

<b>Applications</b>	<p>ELISA</p> <p>Western blot</p>
<b>Form</b>	Liquid
<b>Additional notes</b>	<p>Protein concentration is above or equal to 0.05 mg/ml.</p> <p>Previously labelled as SC11A.</p>

### Preparation and Storage

<b>Stability and Storage</b>	Shipped on dry ice. Upon delivery aliquot and store at -80°C. Avoid freeze / thaw cycles.
------------------------------	---

pH: 8.00

Constituents: 0.31% Glutathione, 0.79% Tris HCl

## General Info

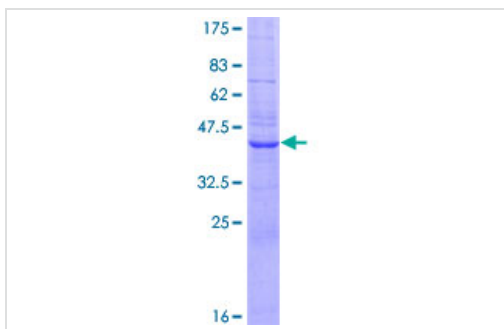
---

<b>Function</b>	Component of the microsomal signal peptidase complex which removes signal peptides from nascent proteins as they are translocated into the lumen of the endoplasmic reticulum.
<b>Sequence similarities</b>	Belongs to the peptidase S26B family.
<b>Cellular localization</b>	Microsome membrane. Endoplasmic reticulum membrane.

---

## Images

---



ab161662 on a 12.5% SDS-PAGE stained with Coomassie Blue.

SDS-PAGE - Recombinant Human SPC18 protein  
(ab161662)

**Please note:** All products are "FOR RESEARCH USE ONLY. NOT FOR USE IN DIAGNOSTIC PROCEDURES"

## Our Abpromise to you: Quality guaranteed and expert technical support

---

- Replacement or refund for products not performing as stated on the datasheet
- Valid for 12 months from date of delivery
- Response to your inquiry within 24 hours
- We provide support in Chinese, English, French, German, Japanese and Spanish
- Extensive multi-media technical resources to help you
- We investigate all quality concerns to ensure our products perform to the highest standards

If the product does not perform as described on this datasheet, we will offer a refund or replacement. For full details of the Abpromise, please visit <https://www.abcam.com/abpromise> or contact our technical team.

## Terms and conditions

---

- Guarantee only valid for products bought direct from Abcam or one of our authorized distributors