

Product datasheet

Recombinant Human SPDEF/PSE protein ab161790

1 Image

Overview

Product name	Recombinant Human SPDEF/PSE protein
Protein length	Full length protein

Description

Nature	Recombinant
Source	Wheat germ
Amino Acid Sequence	
Species	Human
Sequence	<p>MGSASPGLSSVSPSHLLLPPDTVSRRTGLEKAAAGAV GLERRDWSPSPPAT PEQGLSAFYLSYFDMLYPEDSSWAAKAPGASSREEP PEEPEQCPVIDSQA PAGSLDLVPGGLTLEEHSLQVQSMVVEVLKDIETA CKLLNITADPMDW SPSNVQKLLWTEHQYRLPPMGKAFQELAGKELCAM SEEQFRQRSPLGGD VLHAHLDIWKSAAWMKERTSPGAIHYCASTSEESWTD SEVDSSCSGQPIH LWQFLKELLLKPHSYGRFIRWLNKEKGIFKIEDSAQVA RLWGIRKNRPAM NYDKLSRSIRQYKKGIIIRKPDISQRLVYQFVHPI</p>
Amino acids	1 to 335
Tags	GST tag N-Terminus

Specifications

Our [Abpromise guarantee](#) covers the use of **ab161790** in the following tested applications.

The application notes include recommended starting dilutions; optimal dilutions/concentrations should be determined by the end user.

Applications	ELISA Western blot
Form	Liquid

Additional notes

Protein concentration is above or equal to 0.05 mg/ml.
This product was previously labelled as SPDEF

Preparation and Storage

Stability and Storage

Shipped on dry ice. Upon delivery aliquot and store at -80°C. Avoid freeze / thaw cycles.
pH: 8.00
Constituents: 0.31% Glutathione, 0.79% Tris HCl

General Info

Function

May function as an androgen-independent transactivator of the prostate-specific antigen (PSA) promoter. Binds to 5'-GGAT-3' DNA sequences. May play a role in the regulation of the prostate gland and/or prostate cancer development. Acts as a transcriptional activator for SERPINB5 promoter.

Tissue specificity

Expressed in a very restricted set of primarily hormone-regulated epithelial tissues with particularly high expression in the prostate gland. Significantly lower expression is seen in other hormone regulated tissues such as mammary gland, salivary gland, and ovary. Expressed in prostate carcinoma cells.

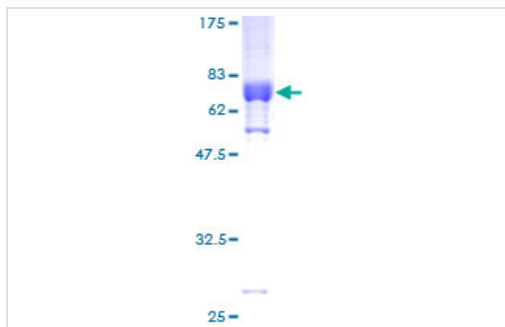
Sequence similarities

Belongs to the ETS family.
Contains 1 ETS DNA-binding domain.
Contains 1 PNT (pointed) domain.

Cellular localization

Nucleus.

Images



SDS-PAGE - Recombinant Human SPDEF/PSE protein (ab161790)

ab161790 on a 12.5% SDS-PAGE stained with Coomassie Blue.

Please note: All products are "FOR RESEARCH USE ONLY AND ARE NOT INTENDED FOR DIAGNOSTIC OR THERAPEUTIC USE"

Our Abpromise to you: Quality guaranteed and expert technical support

- Replacement or refund for products not performing as stated on the datasheet

- Valid for 12 months from date of delivery
- Response to your inquiry within 24 hours

- We provide support in Chinese, English, French, German, Japanese and Spanish
- Extensive multi-media technical resources to help you
- We investigate all quality concerns to ensure our products perform to the highest standards

If the product does not perform as described on this datasheet, we will offer a refund or replacement. For full details of the Abpromise, please visit <https://www.abcam.com/abpromise> or contact our technical team.

Terms and conditions

- Guarantee only valid for products bought direct from Abcam or one of our authorized distributors