

Product datasheet

Recombinant Human Sprouty 1/Spry-1 protein ab153065

[1 Image](#)

Overview

Product name	Recombinant Human Sprouty 1/Spry-1 protein
Protein length	Protein fragment

Description

Nature	Recombinant
Source	Wheat germ
Amino Acid Sequence	
Species	Human
Sequence	MDPQNQHGGSSLVVIQQPSLDSRQLDYEREIQPTAI LSLDQIKAIRGS NEYTEGPSVVKRPAPRTAPRQEKHERTHEIIPINVNNNY EHRHTSHLGHA VLPSNARGPI
Amino acids	1 to 110
Tags	GST tag N-Terminus

Specifications

Our [Abpromise guarantee](#) covers the use of **ab153065** in the following tested applications.

The application notes include recommended starting dilutions; optimal dilutions/concentrations should be determined by the end user.

Applications	Western blot ELISA
Form	Liquid
Additional notes	Protein concentration is above or equal to 0.05 mg/ml. Previously labelled as Sprouty 1.

Preparation and Storage

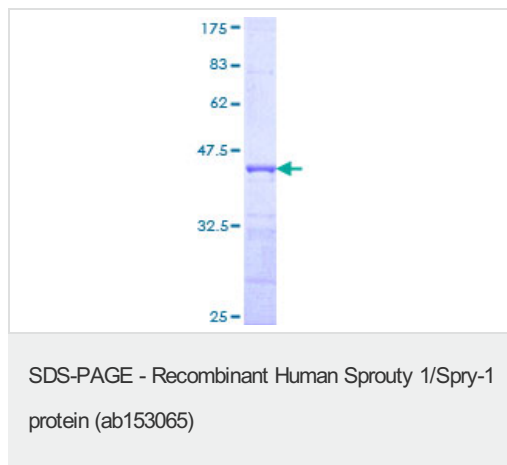
Stability and Storage	Shipped on dry ice. Upon delivery aliquot and store at -80°C. Avoid freeze / thaw cycles. pH: 8.00
------------------------------	---

Constituents: 0.31% Glutathione, 0.79% Tris HCl

General Info

Function	May function as an antagonist of fibroblast growth factor (FGF) pathways and may negatively modulate respiratory organogenesis.
Sequence similarities	Belongs to the sprouty family. Contains 1 SPR (sprouty) domain.
Domain	The Cys-rich domain is responsible for the localization of the protein to the membrane ruffles.
Cellular localization	Cytoplasm. Membrane. Found in the cytoplasm in unstimulated cells but is translocated to the membrane ruffles in cells stimulated with EGF.

Images



ab153065 on a 12.5% SDS-PAGE stained with Coomassie Blue.

Please note: All products are "FOR RESEARCH USE ONLY. NOT FOR USE IN DIAGNOSTIC PROCEDURES"

Our Abpromise to you: Quality guaranteed and expert technical support

- Replacement or refund for products not performing as stated on the datasheet
- Valid for 12 months from date of delivery
- Response to your inquiry within 24 hours
- We provide support in Chinese, English, French, German, Japanese and Spanish
- Extensive multi-media technical resources to help you
- We investigate all quality concerns to ensure our products perform to the highest standards

If the product does not perform as described on this datasheet, we will offer a refund or replacement. For full details of the Abpromise, please visit <https://www.abcam.com/abpromise> or contact our technical team.

Terms and conditions

- Guarantee only valid for products bought direct from Abcam or one of our authorized distributors