

Product datasheet

Recombinant Human SRPX protein ab160020

1 Image

Description

Product name	Recombinant Human SRPX protein
Expression system	Wheat germ
Protein length	Full length protein
Animal free	No
Nature	Recombinant
Species	Human
Sequence	<p>FPGSGDSPLEDDEVGYSHPRYKDTPWCSPIKVKYGD VYCRAPQGGYYKTA LGTRCDIRCQKGYELHGSSLLICQSNKRWSDKVICKQK RCPTLAMPANGG FKCVDGAYFNSRCEYYCSPGYTLKGERTVTCMDNKA WSGRPASCVDMEPP RIKCPSVKERIAEPNKLTVRVSWETPEGRDTADGILTD VILKGLPPGSNF PEGDHKIQYTVYDRAENKGTCKFRVKVRVKRCGKLNA PENGYMKCSSDGD NYGATCEFSCIGGYELQGSPARVCQSNLAWSGTEPTC AAMNVNVGVRTAA ALLDQFYEKRRLLIVSTPTARNLLYRLQLGMLQQAQCG LDLRHITVVELV GVFPTLIGRIGAKIMPPALALQLRLLLRIPLYFSMVLVD KHGMDKERYV SLVMPVALFNLDITFPLRKEEMVLQAEMSQTCNT</p>
Amino acids	31 to 464
Tags	GST tag N-Terminus

Specifications

Our [Abpromise guarantee](#) covers the use of **ab160020** in the following tested applications.

The application notes include recommended starting dilutions; optimal dilutions/concentrations should be determined by the end user.

Applications	ELISA
	Western blot

Form Liquid

Additional notes

Preparation and Storage

Stability and Storage Shipped on dry ice. Upon delivery aliquot and store at -80°C. Avoid freeze / thaw cycles.
pH: 8.00
Constituents: 0.31% Glutathione, 0.79% Tris HCl

General Info

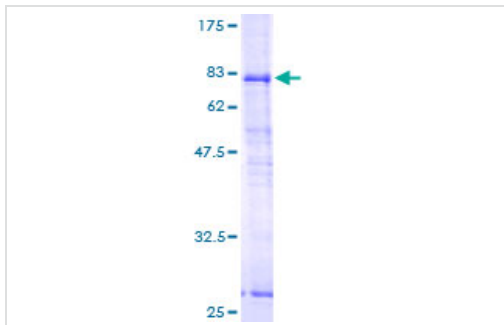
Function May be involved in phagocytosis during disk shedding, cell adhesion to cells other than the pigment epithelium or signal transduction.

Tissue specificity Retina and heart; less in placenta, pancreas, lung, liver, skeletal muscle, kidney and brain.

Sequence similarities Contains 1 HYR domain.
Contains 3 Sushi (CCP/SCR) domains.

Cellular localization Cell surface. Possibly surface of photoreceptor cell.

Images



ab160020 on a 12.5% SDS-PAGE stained with Coomassie Blue.

SDS-PAGE - Recombinant Human SRPX protein
(ab160020)

Please note: All products are "FOR RESEARCH USE ONLY. NOT FOR USE IN DIAGNOSTIC PROCEDURES"

Our Abpromise to you: Quality guaranteed and expert technical support

- Replacement or refund for products not performing as stated on the datasheet
- Valid for 12 months from date of delivery
- Response to your inquiry within 24 hours
- We provide support in Chinese, English, French, German, Japanese and Spanish
- Extensive multi-media technical resources to help you

- We investigate all quality concerns to ensure our products perform to the highest standards

If the product does not perform as described on this datasheet, we will offer a refund or replacement. For full details of the Abpromise, please visit <https://www.abcam.com/abpromise> or contact our technical team.

Terms and conditions

- Guarantee only valid for products bought direct from Abcam or one of our authorized distributors