

Product datasheet

Recombinant Human SRSF5 protein ab159497

1 Image

Overview

| | |
|-----------------------|---------------------------------|
| Product name | Recombinant Human SRSF5 protein |
| Protein length | Full length protein |

Description

| | |
|----------------------------|--|
| Nature | Recombinant |
| Source | Wheat germ |
| Amino Acid Sequence | |
| Species | Human |
| Sequence | <p>MSGCRVFIGRLNPAAREKGVVERFFKGYGRIRDIDLKRG FGFVEFEDPRDA DDAVYELDGKELCSERVIEHARARSRGGRGRGRYSYD RFSSRRPRNDRRN APPVRTENRLIVENLSSRVSWQDLKDFMRQAGEVTFA DAHRPKLNEGVVE FASYGDLKNAIEKLSGKEINGRKIKLIEGSKRHSRSRSR SRSRTRSSSSRS RSRSRSRSRKSYSRSRSRSRSRSRSRSKRSRSVSRSPVP EKSQKRGSSSRSKS PASVDRQRSRSRSRSRSVDSGN</p> |
| Amino acids | 1 to 272 |
| Tags | GST tag N-Terminus |

Specifications

Our [Abpromise guarantee](#) covers the use of **ab159497** in the following tested applications.

The application notes include recommended starting dilutions; optimal dilutions/concentrations should be determined by the end user.

| | |
|-------------------------|---|
| Applications | Western blot ELISA |
| Form | Liquid |
| Additional notes | Protein concentration is above or equal to 0.05 mg/ml. Previously labelled as SFRS5. |

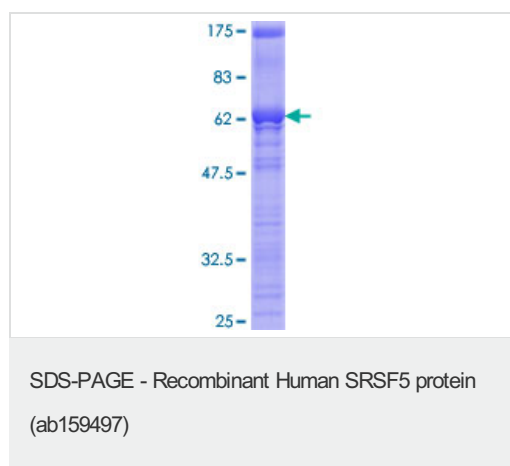
Preparation and Storage

| | |
|------------------------------|--|
| Stability and Storage | Shipped on dry ice. Upon delivery aliquot and store at -80°C. Avoid freeze / thaw cycles. pH: 8.00 Constituents: 0.31% Glutathione, 0.79% Tris HCl |
|------------------------------|--|

General Info

| | |
|---|---|
| Function | Plays a role in constitutive splicing and can modulate the selection of alternative splice sites. |
| Sequence similarities | Belongs to the splicing factor SR family. Contains 2 RRM (RNA recognition motif) domains. |
| Post-translational modifications | Extensively phosphorylated on serine residues in the RS domain. |
| Cellular localization | Nucleus. |

Images



ab159497 on a 12.5% SDS-PAGE stained with Coomassie Blue.

Please note: All products are "FOR RESEARCH USE ONLY. NOT FOR USE IN DIAGNOSTIC PROCEDURES"

Our Abpromise to you: Quality guaranteed and expert technical support

- Replacement or refund for products not performing as stated on the datasheet
- Valid for 12 months from date of delivery
- Response to your inquiry within 24 hours
- We provide support in Chinese, English, French, German, Japanese and Spanish
- Extensive multi-media technical resources to help you
- We investigate all quality concerns to ensure our products perform to the highest standards

If the product does not perform as described on this datasheet, we will offer a refund or replacement. For full details of the Abpromise, please visit <https://www.abcam.com/abpromise> or contact our technical team.

Terms and conditions

- Guarantee only valid for products bought direct from Abcam or one of our authorized distributors