

Product datasheet

Recombinant Human Stathmin 1 protein ab200502

1 Image

Description

Product name	Recombinant Human Stathmin 1 protein	
Purity	> 92 % SDS-PAGE.	
Endotoxin level	< 1.000 Eu/μg	
Expression system	Escherichia coli	
Accession	P16949	
Protein length	Full length protein	
Animal free	No	
Nature	Recombinant	
Species	Human	
Sequence	ASSDIQVKELEKRASGQAFELILSPRSKESVPEFPLSP PKKKDLSLEEQ KKLEAAEERRKSHEAEVLKQLAEKREHEKEVLQKAIE ENNFSKMAEEKL THKMEANKENREAQMAAKLERLREKDKHIEEVRKNKE SKDPADETEAD	
Predicted molecular weight	18 kDa including tags	
Amino acids	2 to 149	
Tags	His tag N-Terminus	
Additional sequence information	NP_981946.	

Specifications

Our [Abpromise guarantee](#) covers the use of **ab200502** in the following tested applications.
 The application notes include recommended starting dilutions; optimal dilutions/concentrations should be determined by the end user.

Applications	SDS-PAGE
Form	Lyophilised

Preparation and Storage

Stability and Storage Shipped at 4°C. Store at -20°C or -80°C. Avoid freeze / thaw cycle.

pH: 7.40

Constituents: 95% PBS, 5% Trehalose

Lyophilised from 0.22 µm filtered solution.

Reconstitution

It is recommended to reconstitute the lyophilised protein in sterile deionized water to a final concentration of 1 mg/mL. Solubilize for 30 to 60 minutes at room temperature with occasional gentle mixing. Carrier protein (0.1% HSA or BSA) is strongly recommended for further dilution and long term storage.

General Info

Function

Involved in the regulation of the microtubule (MT) filament system by destabilizing microtubules. Prevents assembly and promotes disassembly of microtubules. Phosphorylation at Ser-16 may be required for axon formation during neurogenesis. Involved in the control of the learned and innate fear.

Tissue specificity

Ubiquitous. Expression is strongest in fetal and adult brain, spinal cord, and cerebellum, followed by thymus, bone marrow, testis, and fetal liver. Expression is intermediate in colon, ovary, placenta, uterus, and trachea, and is readily detected at substantially lower levels in all other tissues examined. Lowest expression is found in adult liver. Present in much greater abundance in cells from patients with acute leukemia of different subtypes than in normal peripheral blood lymphocytes, non-leukemic proliferating lymphoid cells, bone marrow cells, or cells from patients with chronic lymphoid or myeloid leukemia.

Sequence similarities

Belongs to the stathmin family.

Contains 1 SLD (stathmin-like) domain.

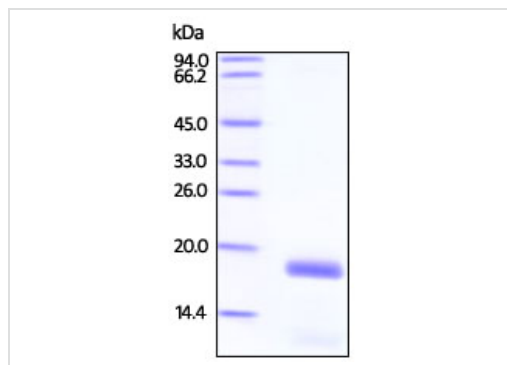
Post-translational modifications

Many different phosphorylated forms are observed depending on specific combinations among the sites which can be phosphorylated. MAPK is responsible for the phosphorylation of stathmin in response to NGF. Phosphorylation at Ser-16 seems to be required for neuron polarization (By similarity). Phosphorylation at Ser-63 reduces tubulin binding 10-fold and suppresses the MT polymerization inhibition activity.

Cellular localization

Cytoplasm > cytoskeleton.

Images



SDS-PAGE - Recombinant Human Stathmin 1 protein (ab200502)

DTT-reduced SDS-PAGE analysis of ab200502 stained overnight with Coomassie Blue.

DTT-reduced protein migrates as 17-20 kDa in SDS-PAGE .

Please note: All products are "FOR RESEARCH USE ONLY. NOT FOR USE IN DIAGNOSTIC PROCEDURES"

Our Abpromise to you: Quality guaranteed and expert technical support

- Replacement or refund for products not performing as stated on the datasheet
- Valid for 12 months from date of delivery
- Response to your inquiry within 24 hours

- We provide support in Chinese, English, French, German, Japanese and Spanish
- Extensive multi-media technical resources to help you
- We investigate all quality concerns to ensure our products perform to the highest standards

If the product does not perform as described on this datasheet, we will offer a refund or replacement. For full details of the Abpromise, please visit <https://www.abcam.com/abpromise> or contact our technical team.

Terms and conditions

- Guarantee only valid for products bought direct from Abcam or one of our authorized distributors