

Product datasheet

Recombinant human STK38 protein ab101549

[5 Images](#)

Description

Product name	Recombinant human STK38 protein
Biological activity	The Specific activity of ab101549 was determined to be 4 nmol/min/mg.
Purity	> 70 % SDS-PAGE. The purity was determined to be >75% by densitometry
Expression system	Baculovirus
Accession	Q15208
Protein length	Full length protein
Animal free	No
Nature	Recombinant
Species	Human
Predicted molecular weight	81 kDa including tags

Specifications

Our [Abpromise guarantee](#) covers the use of **ab101549** in the following tested applications.

The application notes include recommended starting dilutions; optimal dilutions/concentrations should be determined by the end user.

Applications	Functional Studies SDS-PAGE
Form	Liquid
Additional notes	ab204869 (PKI-alpha peptide) can be utilized as a substrate for assessing kinase activity

Preparation and Storage

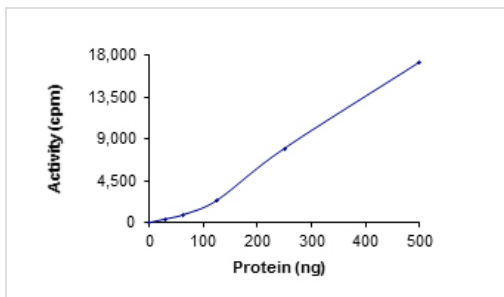
Stability and Storage	Shipped on dry ice. Upon delivery aliquot and store at -80°C. Avoid freeze / thaw cycles. pH: 7.50 Constituents: 0.307% Glutathione, 0.00174% PMSF, 0.00385% DTT, 0.79% Tris HCl, 0.00292% EDTA, 25% Glycerol, 0.87% Sodium chloride This product is an active protein and may elicit a biological response in vivo, handle with caution.
------------------------------	--------------------------------------------------------------------------------------------------------------------------------------------------------------------------------------------------------------------------------------------------------------------------------------------------------------------------------------------------------

General Info

General info

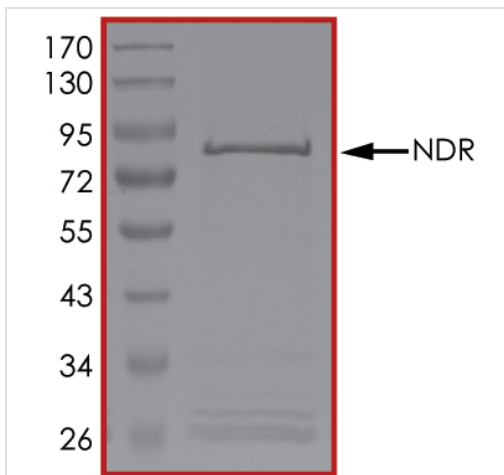
Function	Negative regulator of MAP3K1/2 signaling. Converts MAP3K2 from its phosphorylated form to its nonphosphorylated form and inhibits autophosphorylation of MAP3K2.
Tissue specificity	Ubiquitously expressed with highest levels observed in peripheral blood leukocytes.
Sequence similarities	Belongs to the protein kinase superfamily. AGC Ser/Thr protein kinase family. Contains 1 AGC-kinase C-terminal domain. Contains 1 protein kinase domain.
Post-translational modifications	ISGylated.
Cellular localization	Nucleus. Cytoplasm.

Images



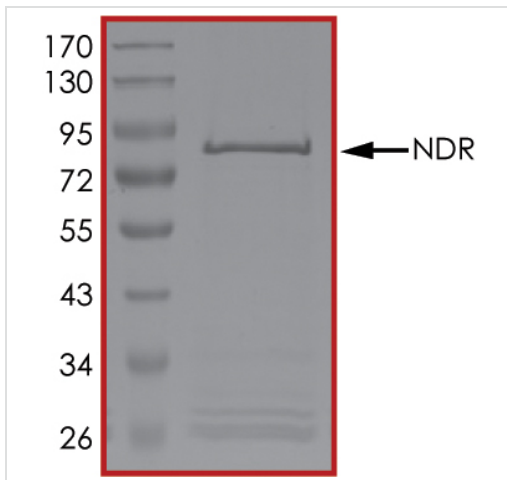
Functional Studies - Recombinant human STK38 protein (ab101549)

The specific activity of STK38 (ab101549) was determined to be 3.4 nmol/min/mg as per activity assay protocol



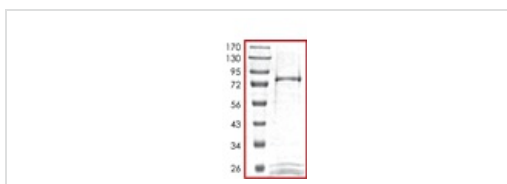
SDS PAGE analysis of ab101549

SDS-PAGE - Recombinant human STK38 protein (ab101549)



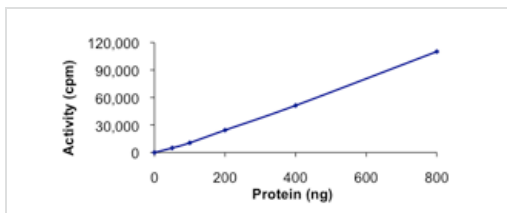
SDS PAGE analysis of ab101549

SDS-PAGE - Recombinant human STK38 protein (ab101549)



SDS-PAGE showing ab101549 at approximately 81kDa.

SDS-PAGE - Recombinant human STK38 protein (ab101549)



Kinase Assay demonstrating specific activity of ab101549.

Functional Studies - Recombinant human STK38 protein (ab101549)

Please note: All products are "FOR RESEARCH USE ONLY. NOT FOR USE IN DIAGNOSTIC PROCEDURES"

Our Abpromise to you: Quality guaranteed and expert technical support

- Replacement or refund for products not performing as stated on the datasheet
- Valid for 12 months from date of delivery
- Response to your inquiry within 24 hours

- We provide support in Chinese, English, French, German, Japanese and Spanish
- Extensive multi-media technical resources to help you
- We investigate all quality concerns to ensure our products perform to the highest standards

If the product does not perform as described on this datasheet, we will offer a refund or replacement. For full details of the Abpromise, please visit <https://www.abcam.com/abpromise> or contact our technical team.

Terms and conditions

- Guarantee only valid for products bought direct from Abcam or one of our authorized distributors