

Product datasheet

Recombinant Human Stra6 protein ab163804

1 Image

Description

<b>Product name</b>	Recombinant Human Stra6 protein
<b>Expression system</b>	Wheat germ
<b>Protein length</b>	Full length protein
<b>Animal free</b>	No
<b>Nature</b>	Recombinant
<b>Species</b>	Human
<b>Sequence</b>	<p>MSSQPAGNQTSPGATEDYSYGSWYDEPQGGEELQPEG  EVPSCHTSIPPG  LYHACLASLSILVLLLLAMLVRRRQLWPDCVRGRPGLPSP  VDFLAGDRPR  AVPAAVFMVLLSSLCLLLPEDEDALPFLTLASAPSQDGKTE  APRGAWKILG  LFYYAALYYPLAACATAGHTAAHLLGSTLSWAHLGVQVWQ  RAECPQVPKI  YKYSSLASLPLLLGLGFLSLWYPVQLVRSFSRRTGAGSK  GLQSSYSEY  LRNLLCRKKGSSYHTSKHGFLSWARVCLRHCIYTPQPGF  HLPLKLVLSA  TLTGTAIQVALLLVGVVPTIQKVRAGVTTDVSYLLASFGM  LSEDKQE  VVELVKHHLWALEVCYISALVLSCLLTFLVLMRSLVTHRTN  LRALHRGAA  LDLSPLHRSPHPSRQAIFCWMSFSAYQTAFICLGLLVQQIIF  FLGTTALA  FLVLMPVLHGRNLLFRSLESSWPFWLTLALAVILQNMAA  HWWFLETHDG  HPQLTNRRLVYAATFLFPLNVLVGAMVATWRVLLSALYN  AIHLGQMDLS  LLPPRAATLDPGYTYRNFLKIEVSQSHPAMTAFCSLLLQA  QSLLPRTMA  APQDSLRLPGEEDGEMQLLQTKDSMAKGARPGASRGRAR  WGLAYTLLHNPTLQVFRKTALLGANGAQP</p>
<b>Amino acids</b>	1 to 667
<b>Tags</b>	GST tag N-Terminus

## Specifications

---

Our [Abpromise guarantee](#) covers the use of **ab163804** in the following tested applications.

The application notes include recommended starting dilutions; optimal dilutions/concentrations should be determined by the end user.

**Applications** ELISA  
Western blot

**Form** Liquid

**Additional notes**

## Preparation and Storage

---

**Stability and Storage** Shipped on dry ice. Upon delivery aliquot and store at -80°C. Avoid freeze / thaw cycles.  
pH: 8.00  
Constituents: 0.31% Glutathione, 0.79% Tris HCl

## General Info

---

**Function** May act as a high-affinity cell-surface receptor for the complex retinol-retinol binding protein (RBP/RBP4). Acts by removing retinol from RBP/RBP4 and transports it across the plasma membrane, where it can be metabolized. This mechanism does not depend on endocytosis. Binds to RBP/RBP4 with high affinity. Increases cellular retinol uptake from the retinol-RBP complex.

**Tissue specificity** Broad expression. In adult eye expressed in sclera, retina, retinal pigment epithelium, and trabecular meshwork but not in choroid and iris.

**Involvement in disease** Defects in STRA6 are the cause of microphthalmia syndromic type 9 (MCOPS9) [MIM:601186]; also called Matthew-Wood syndrome or Spear syndrome. Microphthalmia is a clinically heterogeneous disorder of eye formation, ranging from small size of a single eye to complete bilateral absence of ocular tissues (anophthalmia). In many cases, microphthalmia/anophthalmia occurs in association with syndromes that include non-ocular abnormalities. MCOPS9 is a rare clinical entity including as main characteristics anophthalmia or severe microphthalmia, and pulmonary hypoplasia or aplasia.

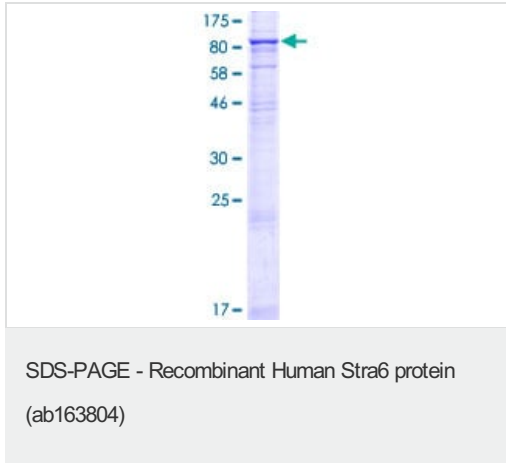
Note=Mutations in STRA6 may be a cause of isolated colobomatous microphthalmia, a disorder of the eye characterized by an abnormally small ocular globe.

**Cellular localization** Cell membrane.

---

## Images

---



ab163804 on a 12.5% SDS-PAGE stained with Coomassie Blue.

**Please note:** All products are "FOR RESEARCH USE ONLY. NOT FOR USE IN DIAGNOSTIC PROCEDURES"

### Our Abpromise to you: Quality guaranteed and expert technical support

---

- Replacement or refund for products not performing as stated on the datasheet
- Valid for 12 months from date of delivery
- Response to your inquiry within 24 hours
- We provide support in Chinese, English, French, German, Japanese and Spanish
- Extensive multi-media technical resources to help you
- We investigate all quality concerns to ensure our products perform to the highest standards

If the product does not perform as described on this datasheet, we will offer a refund or replacement. For full details of the Abpromise, please visit <https://www.abcam.com/abpromise> or contact our technical team.

### Terms and conditions

---

- Guarantee only valid for products bought direct from Abcam or one of our authorized distributors